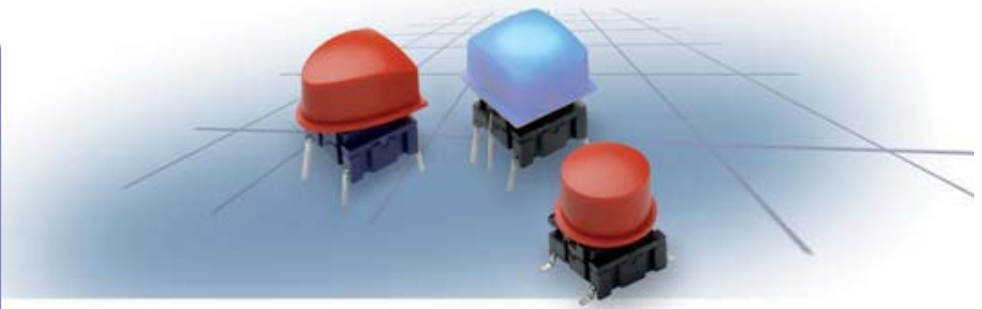


multimec® 3F/4F + 1T/1U/1V

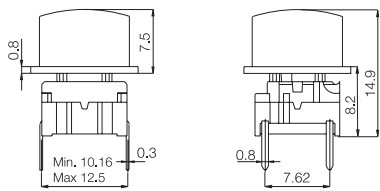
Technical Data

- through-hole or SMD
- 50mA/24VDC
- single pole/momentary
- 10.000.000 operations life time
- IP67 sealing
- temperature range:
 - low temp: -40/+115°C
 - high temp: -40/+160°C

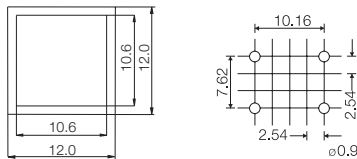


Keycaps shown on this page can also be used on **illumec™ switch 4F**

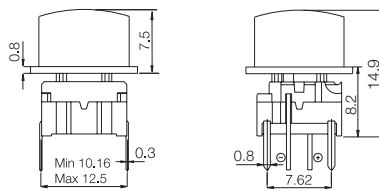
Dimensions (through-hole) 3F



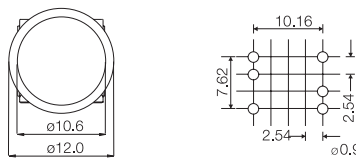
PCB layout



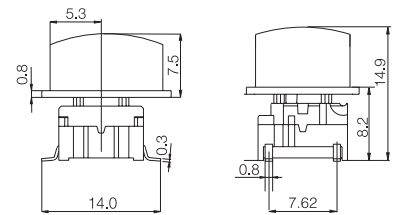
Dimensions (w/LED) 3F



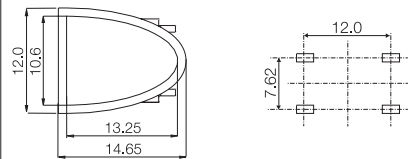
PCB layout (top view)



Dimensions (SMD) 3F



PCB layout



How to order

3 F	<input type="checkbox"/>	<input type="checkbox"/>	+	<input type="checkbox"/>	<input type="checkbox"/>
Switch	Mounting	L 6 low temp. H 9 high temp.		Cap	00 blue 03 grey 08 red 09 black
	T through-hole S surface mount			1T	
				1U	
				1V	

3 F	T	<input type="checkbox"/>	<input type="checkbox"/>	+	<input type="checkbox"/>	1 6
Switch	Mounting	L 6 low temp. H 9 high temp.	LED		Cap	frosted white
	T through-hole		24 green 45 yellow 89 red		1T	
					1U	
					1V	

Ordering example: 3FTL645 + 1V16

For updates of products and/or changes of specifications please see www.mec.dk