

# multimec<sup>®</sup> 3F/4F + 1D/1E/1F

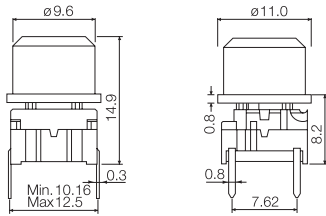
## Technical Data

- through-hole or SMD
- 50mA/24VDC
- single pole/momentary
- 10.000.000 operations life time
- IP67 sealing
- temperature range:
  - low temp: -40/+115°C
  - high temp: -40/+160°C

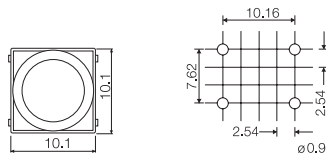


Keycaps shown on this page can also be used on **illumec™ switch 4F**

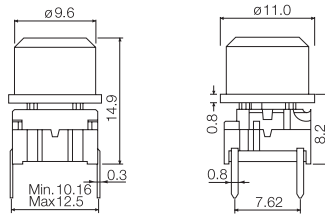
### Dimensions (through-hole) 3F



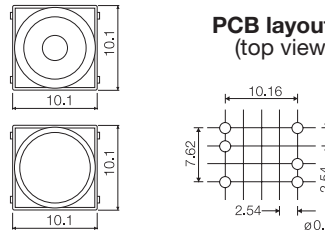
### PCB layout



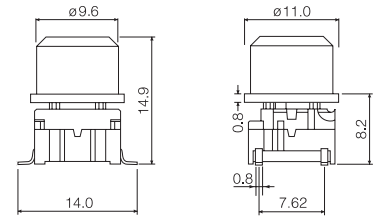
### Dimensions (w/LED) 3F



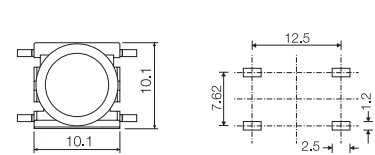
### PCB layout (top view)



### Dimensions (SMD) 3F



### PCB layout



## How to order

**3 F**

Switch



Mounting

T through-hole  
S surface mount



L 6 low temp.  
H 9 high temp.

**1 D**

Cap



00 blue  
02 green  
03 grey  
04 yellow  
06 white  
08 red  
09 black

30 ultra blue  
40 dusty blue  
42 aqua blue  
32 mint green  
33 tele grey  
34 melon  
38 noble red

50 metal dark blue  
53 metal light grey  
57 metal dark grey  
58 metal bordeaux

Keycaps shown on this page can also be used on **illumec™ switch 4F**

**3 F**

Switch



Mounting

T through-hole



L 6 low temp.  
H 9 high temp.



LED

00 blue  
20 green  
40 yellow  
60 white  
80 red  
2040 green/yellow  
8020 red/green  
8040 red/yellow

+



Cap 1D



Cap 1E



Cap 1F



11 transparent  
16 frosted white



Lens

00 blue  
02 green  
03 grey  
04 yellow  
06 white  
08 red  
09 black

1 transparent  
2 green  
4 yellow  
6 frosted white  
8 red

Ordering example: 3FTL620 + 1E032

For updates of products and/or changes of specifications please see [www.mec.dk](http://www.mec.dk)