

EP Series Sealed Tiny Pushbutton Switches



A
Pushbutton

Features/Benefits

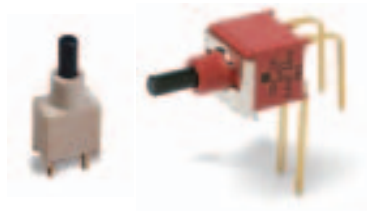
- Sealed against solder & cleaning processes
- Thru-hole and surface mount models
- Snap-fitting actuator accepts standard caps
- Tape & reel packaging available
- RoHS compliant models available



Models Available

Typical Applications

- Telecommunications and networking equipment
- Computers and peripherals
- Instrumentation and controls



Specifications

CONTACT RATING: B contact material: 0.4 VA max. @ 20 V AC or DC max. See page A-13 for additional ratings.

ELECTRICAL LIFE: EP11, EP21 models: 60,000 make-and-break cycles at full load. EP12 models: 30,000 cycles.

CONTACT RESISTANCE: Below 20 mΩ typ. initial @ 2-4 V DC, 100 mA, for both silver and gold plated contacts.

INSULATION RESISTANCE: 10⁹ Ω min.

DIELECTRIC STRENGTH: 1000 Vrms min. @ sea level.

OPERATING TEMPERATURE: -30°C to 85°C.

SOLDERABILITY: Per MIL-STD-202F method 208D, or EIA RS-186E method 9 (1 hour steam aging).

DEGREE OF PROTECTION: IP57; Protection against harmful dust deposit, full-scale voltage protection, temporary immersion.

PACKAGING: Surface mount switches standard in anti-static tape and reel packaging per EIA 481-3, see page A-14 for drawings and reel information. Tape and cover strip are conductive for use near statically sensitive components, consult Customer Service Center.

Materials

CASE & BUSHING: High temperature material, glass filled nylon 4/6, flame retardant, heat stabilized (UL 94V-0) on EP11 / EP12 models; glass filled nylon 6/6 on EP21.

PLUNGER: Thermoplastic polyester or glass filled nylon (UL 94V-0), with internal o-ring seal. SA surface mount: High temperature material, glass filled LCP (UL 94V-0).

SWITCH SUPPORT: Brass, matte-tin plated.

CONTACTS & TERMINALS: B contact material: Copper alloy, with gold plate over nickel plate. See page A-13 for additional contact materials.

TERMINAL SEAL: Epoxy.

NOTE: Any models supplied with Q, B, P, S, R or G contact material are RoHS compliant.

NOTE: Specifications and materials listed above are for switches with standard options. For information on specific and custom switches, consult Customer Service Center.

CAUTION: PC mounting layouts and pads as shown are designed to be compatible with the latest equipment and reflow techniques. Care should be taken in the design and location of PC lands to suit individual needs. Orientation relative to reflow direction may significantly impact solder joint integrity.

Build-A-Switch

To order, simply select desired option from each category and place in the appropriate box. Available options are shown and described on pages A-10 thru A-14. For additional options not shown in catalog, consult Customer Service Center. All models are process sealed to withstand machine soldering temperatures and pressure wash cleaning methods.

<div style="border: 1px solid black; width: 100px; height: 20px; display: inline-block;"></div> <div style="border: 1px solid black; width: 100px; height: 20px; display: inline-block;"></div> <div style="border: 1px solid black; width: 100px; height: 20px; display: inline-block;"></div> <div style="border: 1px solid black; width: 100px; height: 20px; display: inline-block;"></div> <div style="border: 1px solid black; width: 100px; height: 20px; display: inline-block;"></div> <div style="border: 1px solid black; width: 100px; height: 20px; display: inline-block;"></div>		
Switch Function EP11 SPST Off-Mom. EP12 SPDT On-Mom. EP21 DPST Off-Mom.	Plunger S .215" high S1 .110" high S2 .465" high FP Flush R Snap-fitting, .215 high Bushing D1 Unthreaded Terminations A Right angle, PC thru-hole C PC Thru-hole AV Vertical right angle, PC thru-hole AV3 Vertical right angle, snap-in, PC thru-hole SA Right angle, surface mount SA1 Right angle, surface mount rear facing V3 Vertical mount, v-bracket V31 Vertical mount, v-bracket, snap-in (EP11 & EP12 only) W Wire wrap	Contact Material B Gold P Gold, matte-tin Q Silver S Silver, matte-tin G Gold over silver R Gold over silver, matte tin
		Seal E Epoxy



Dimensions are shown: Inches (mm)
Specifications and dimensions subject to change

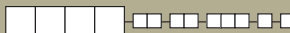


A

Pushbutton

EP Series Sealed Tiny Pushbutton Switches

SWITCH FUNCTION

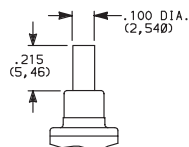
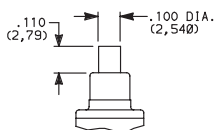
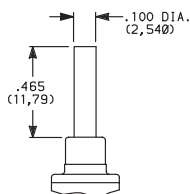
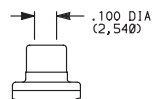
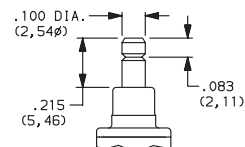


NO. POLES	MODEL NO.	SWITCH FUNCTION		CONNECTED TERMINALS		SCHEMATIC
		POS. 1	POS. 2	POS. 1	POS. 2	
		C&K marking on opposite side		C&K marking on opposite side		
SP	EP11	OFF	MOM.	OPEN	1-3	SPST
	EP12	ON	MOM.	2-1	2-3	SPDT
SPDT						
 Part number shown: EP12SD1CBE Terminal Nos. For Reference Only						
DP	EP21	OFF	MOM.	OPEN	1-3,4-6	DPST
DPST						
 Part number shown: EP21SD1CBE Terminal Nos. For Reference Only						

MOM. = Momentary

All models with all options when ordered with G, Q, R or S contact material.

PLUNGER

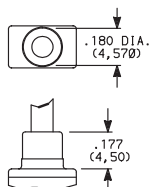
**S** .215" HIGH**S1** .110" HIGH**S2** .465" HIGH**FP** FLUSH PLUNGER**R** SNAP-FITTING

S1 & S2 actuators are not available with EP12 & EP21 models.

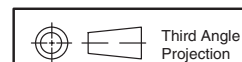
FP & R actuators are not available with EP21 model.

NOTE: Caps available for plunger options, see page A-14.

BUSHING

**D1** UNTHREADED

NOTE: Internal actuator o-ring standard.

Dimensions are shown: Inches (mm)
Specifications and dimensions subject to change**C&K**

www.ck-components.com

EP Series Sealed Tiny Pushbutton Switches



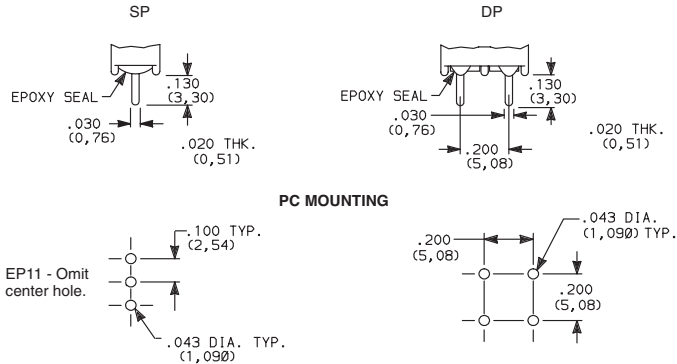
A

Pushbutton

TERMINATIONS

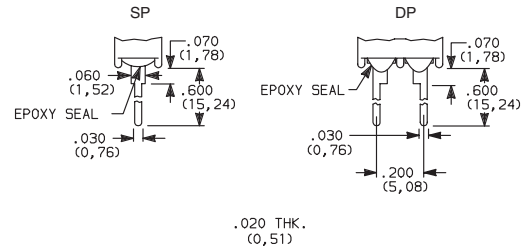


C PC THRU-HOLE



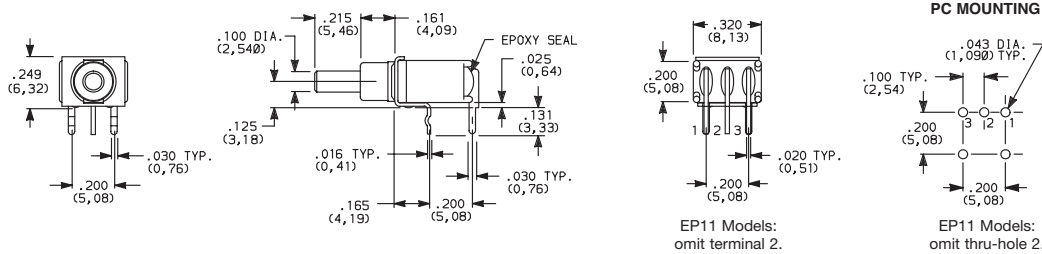
SP and DP

W WIRE WRAP

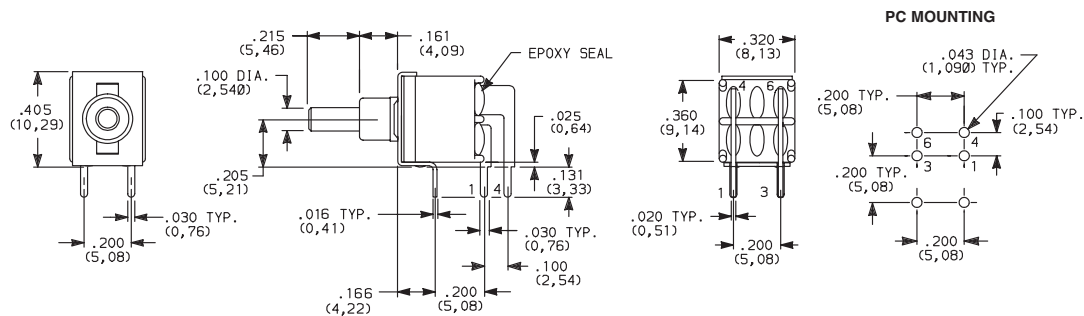


SP and DP

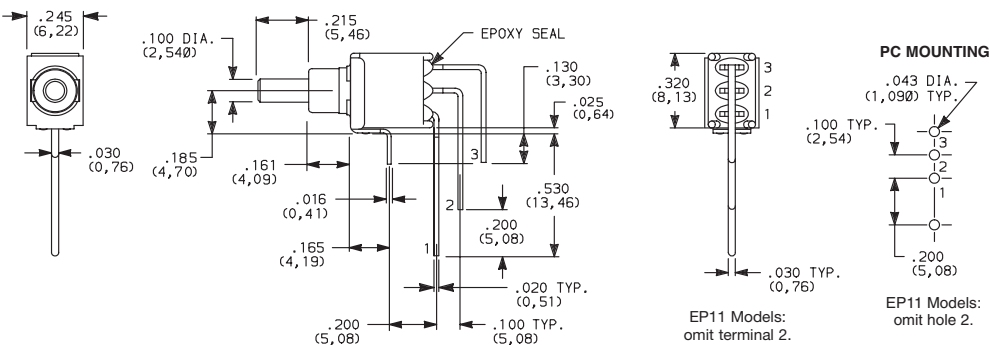
A RIGHT ANGLE, PC THRU-HOLE



A RIGHT ANGLE, PC THRU-HOLE



AV VERTICAL RIGHT ANGLE, PC THRU-HOLE



NOTE: Terminal bend radii and lead-in manufacturing option.



Third Angle
Projection

Dimensions are shown: Inches (mm)
Specifications and dimensions subject to change

www.ck-components.com

EP Series Sealed Tiny Pushbutton Switches



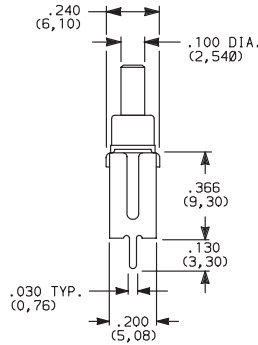
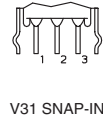
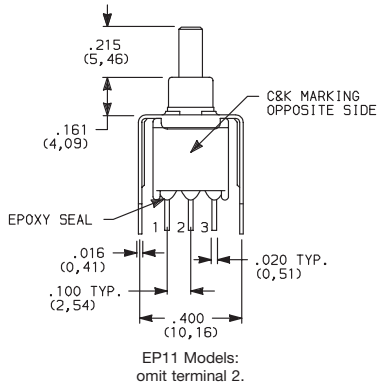
A

Pushbutton

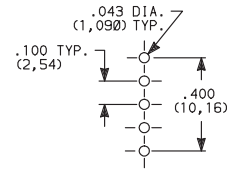
TERMINATIONS



- V3** VERTICAL MOUNT, V-BRACKET
V31 VERTICAL MOUNT, V-BRACKET, SNAP-IN



PC MOUNTING

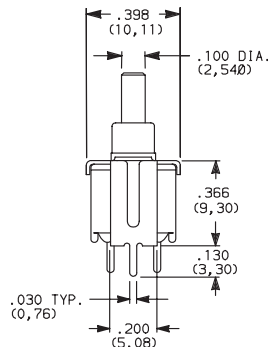
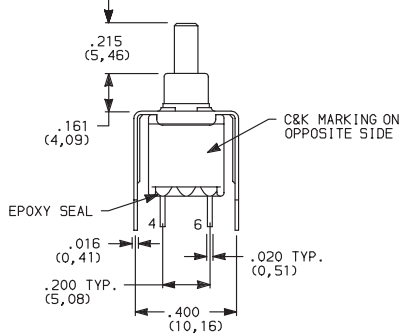


EP11 Models:
omit centerhole.

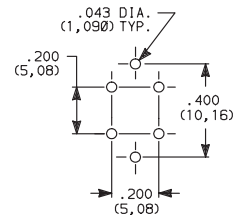


EP12SD1V3BE
SPDT

- V3** VERTICAL MOUNT, V-BRACKET



PC MOUNTING



EP21SD1V3BE
DPST

CONTACT MATERIAL



OPTION CODE	CONTACT MATERIAL	TERMINAL PLATING	RATINGS	
B	GOLD ¹	GOLD ¹	LOW LEVEL/DRY CIRCUIT	0.4 VA MAX. @ 20 V AC OR DC MAX.
P		MATTE-TIN ⁶		
Q	SILVER ^{4,5}	SILVER ⁵	POWER	1 AMP @ 120 V AC OR 28 V DC.
S		MATTE-TIN ⁶		
G	GOLD OVER SILVER ^{2,3}	GOLD ³	LOW LEVEL/DRY CIRCUIT OR POWER	0.4 VA MAX @ 20 V AC OR DC MAX. OR 1 AMP @ 120 V AC OR 28 V DC.
R		MATTE-TIN ⁶		

* Note: See Technical Data section of this catalog for RoHS compliant and compatible definitions and specifications.

¹ CONTACTS & TERMINALS: Copper alloy, with gold plate over nickel plate.

² END CONTACTS: Coin silver, with gold plate over nickel plate.

³ CENTER CONTACTS & ALL TERMINALS: Copper alloy, with gold plate over nickel plate.

⁴ END CONTACTS: Coin silver, silver plated.

⁵ CENTER CONTACT & ALL TERMINALS: Copper alloy, silver plated.

⁶ TERMINALS: Copper alloy, with matte tin over nickel plate.

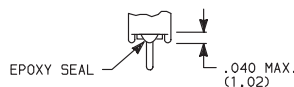
NOTE: Any models supplied with Q, B, P, S, R or G contact material are RoHS compliant.

All models with all options when ordered with G, S, R or Q contact material.

SEAL



- E** EPOXY SEAL



Dimensions are shown: Inches (mm)
Specifications and dimensions subject to change

www.ck-components.com

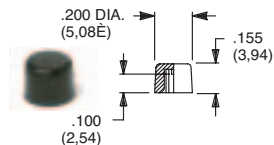




EP Series Sealed Tiny Pushbutton Switches

AVAILABLE HARDWARE

Cap



PART NO.

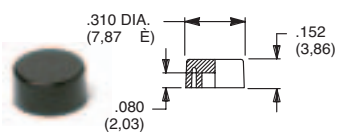
508101000 WHITE
508102000 BLACK
508103000 RED

Material: Nylon

Finish: Gloss

Not for use on S1 plunger

Cap



PART NO.

465801000 WHITE
465802000 BLACK
465803000 RED

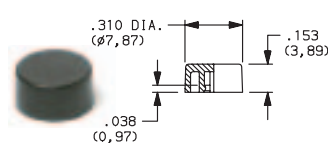
Material: Nylon

Finish: Gloss

Not for use on S1 plunger

Cap

Compatible with snap-fitting plungers
EP11 & EP12 Models. R option only.



PART NO.

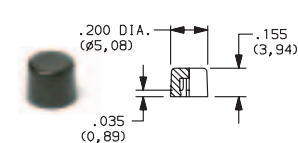
585A01000 WHITE
585A02000 BLACK
585A03000 RED

Material: Nylon

Finish: Gloss

Cap

Compatible with snap-fitting plungers
EP11 & EP12 Models. R option only.



PART NO.

785A01000 WHITE
785A02000 BLACK
785A03000 RED

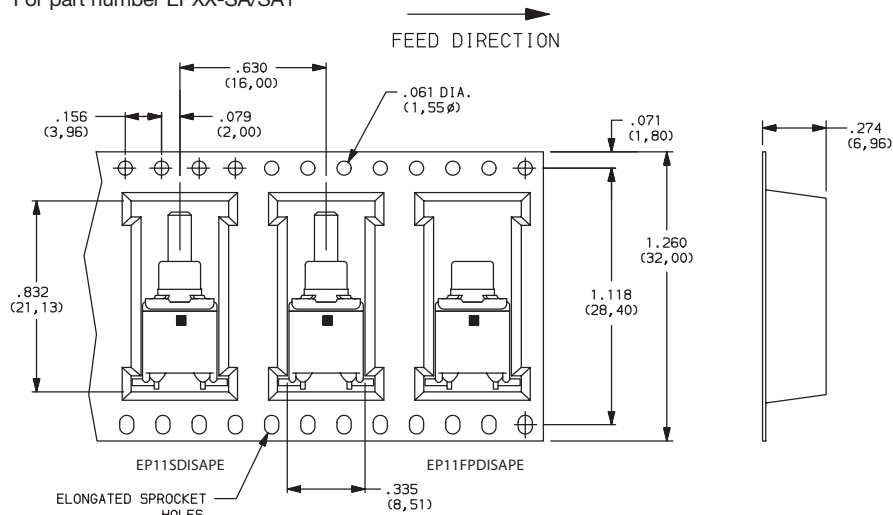
Material: Nylon

Finish: Gloss

NOTE: Other colors available, consult Customer Service Center.

TAPE & REEL

For part number EPXX-SA/SA1



REEL INFORMATION	
OUTSIDE DIAMETER	13.00 (330,0)
PILOT HOLE	.512 (13,0)
QUANTITY PER REEL	600