

# MICRO SWITCH

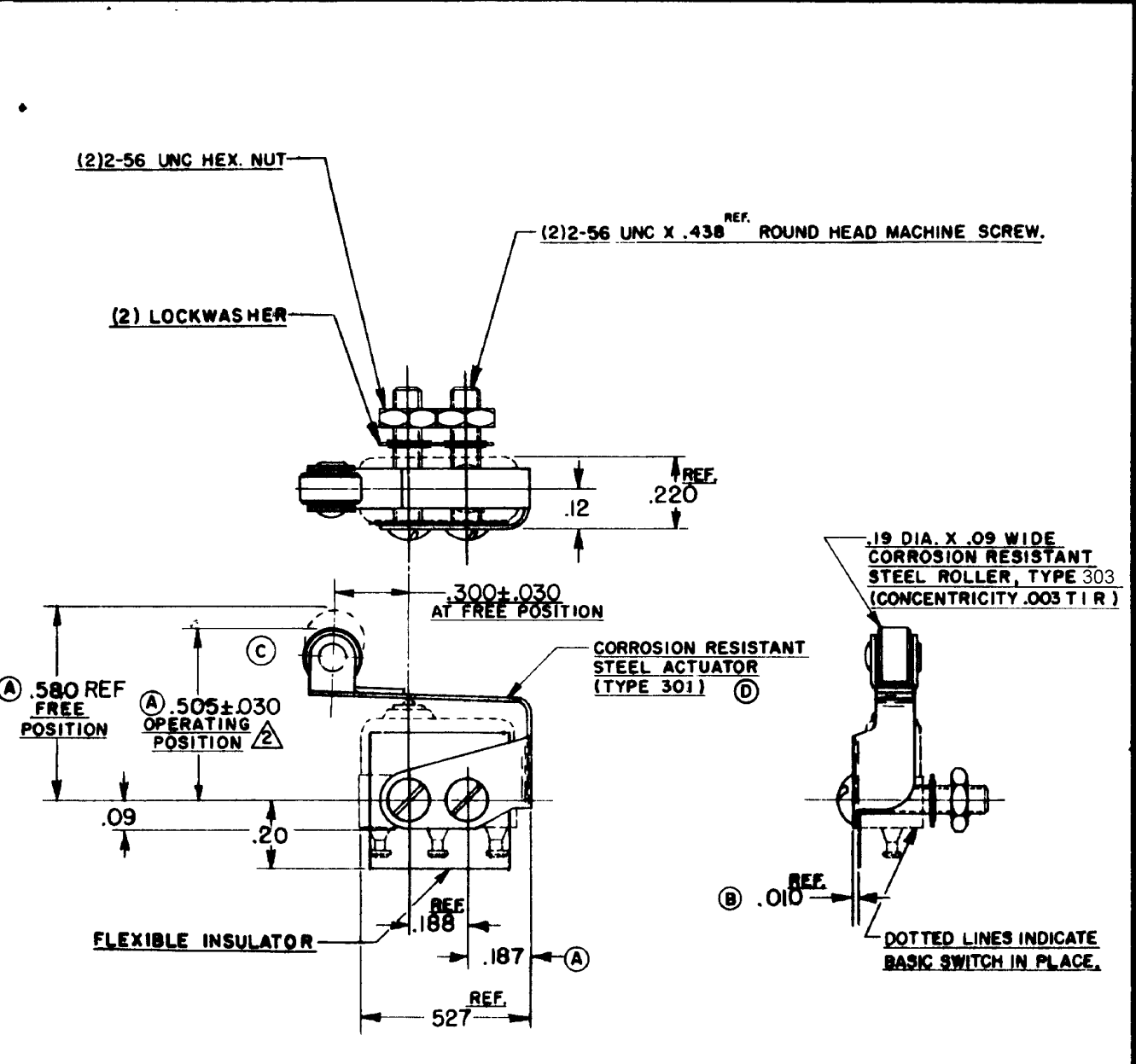
A DIVISION OF MINNEAPOLIS-HONEYWELL REGULATOR COMPANY  
 HONEYWELL BUILDING  
 ST. LOUIS, MISSOURI 63101  
 FED. MFR. CODE 91929

## ACTUATOR - SWITCH

CATALOG LISTING  
**JX-51**

5

DRAWING NUMBER: **JX-51**  
 ISSUE: **2**  
 REVISIONS:  
 A CO13644 M B F 27 APR 69  
 B CO15829 M B F 17 APRIL 61  
 C CO22879 O M W 1 MAY 67  
 D CO22579 M B S 19 APR 68  
 E CO47771 C J H 17 MAY 80  
 F CO74163 D H D 22 APR 93  
 G CO82929 B L T 13 MAY 96  
 H 0015428 S P K 14 SEP 05  
 CHECK: **R E D** B L S G C H  
 RELEASE NO. SR 7760  
 REPLACES: **R E D** B L S G C H  
 CHECK: **R E D** B L S G C H  
 DRAWN: **R. E. R.** 5 SEPT 58  
 FO-50376



**NOTE -**  
 1- SCREWS, NUTS, LOCKWASHERS AND INSULATOR FURNISHED UNASSEMBLED.  
 △ SLIGHT ROTATION BETWEEN BASIC AND ACTUATOR MAY BE NECESSARY TO OBTAIN OPERATING POINT

CHECK: RJ 14SEP05

THIS DRAWING COVERS A PROPRIETARY ITEM AND IS THE PROPERTY OF MICRO SWITCH, A DIVISION OF MINNEAPOLIS-HONEYWELL REGULATOR CO. THIS DRAWING IS NOT TO BE COPIED OR USED WITHOUT THE APPROVAL OF MICRO SWITCH.

CHARACTERISTICS WITH ISX1-T BASIC SWITCH INSTALLED		ELECTRICAL DATA		SCALE 2 TO 1
OPERATING FORCE - - - - -	6 OZ. MAX.	CONTACT ARRANGEMENT	BREAK DISTANCE	DO NOT SCALE PRINT
RELEASE FORCE - - - - -	2 OZ. MIN.			UNLESS OTHERWISE SPECIFIED
DIFFERENTIAL TRAVEL - - -	.025 MAX.			DIMENSIONS ARE IN INCHES
OVERTRAVEL - - - - -	.015 MIN. (A)			<b>TOLERANCES ARE:</b>
				ONE PLACE (.0) ±.030
				TWO PLACE (.00) ±.015
				THREE PLACE (.000) ±.005
				ANGLES ±
				WEIGHT