

THIS DRAWING IS UNPUBLISHED. RELEASED FOR PUBLICATION  
 © COPYRIGHT BY TYCO ELECTRONICS CORPORATION. ALL INTERNATIONAL RIGHTS RESERVED.

LOC	DIST	REVISIONS		
AD	00	P	LR	DATE
		A1	REVISED PER ECO-10-000290	07JAN11
				HMR MW

SPECIFICATIONS:

MATERIALS:  
 MOVING CONTACT: COPPER ALLOY, GOLD PLATE OVER SILVER CLAD.  
 FIXED CONTACT: COPPER ALLOY, GOLD PLATE OVER SILVER CLAD.

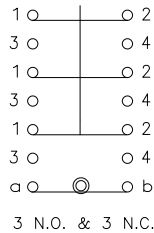
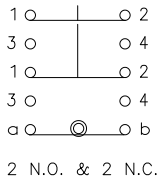
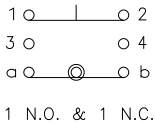
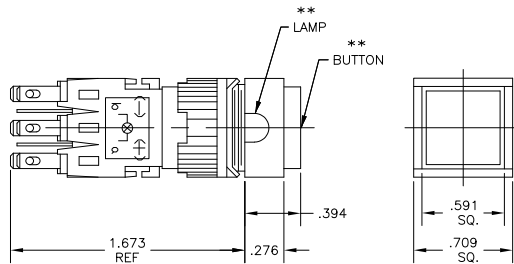
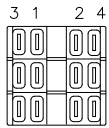
ELECTRICAL:  
 CONTACT RATING: 0.4VA @ 20VDC OR PEAK AC.  
 5 AMPS @ 250VAC OR 24VDC ( RESISTIVE ).  
 INITIAL CONTACT RESISTANCE: 20 MILLIOHMS MAX.  
 INSULATION RESISTANCE: 100 MEGOHMS MINIMUM.  
 DIELECTRIC STRENGTH: 1500 VOLTS RMS @ SEA LEVEL.  
 LIFE EXPECTANCY: 100,000 CYCLES.

ENVIRONMENTAL:  
 OPERATING TEMPERATURE: -4°F TO +122°F (-20°C TO +50°C)  
 STORAGE TEMPERATURE: -4°F TO +122°F (-20°C TO +50°C)

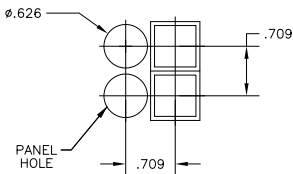
- 1 INTERPRET DRAWING PER ASME Y14.5M-1994.
- 2 OILTIGHT MODELS MEET NEMA 1, 12, 13 REQUIREMENTS.
- 3 UL RECOGNIZED E-51302.
- 4 PANEL THICKNESS: NON-OILTIGHT = 0.230 MAX.  
OILTIGHT = 0.210 MAX.

- ⚠ THE PLATINGS CONTAINED IN THIS PART SHALL CONTAIN NO LEAD.
- ⚠ PRELIMINARY PART, NOT RELEASED FOR PRODUCTION.

\*\* ORDER BUTTON AND LAMP SEPARATELY: SEE DWG NO'S 80810 & 80811



CONTACT DIAGRAM  
 (BUTTON NOT DEPRESSED)



PANEL CUTOUT  
 SCALE: 1/1  
 TOLERANCE +/- .002

TE PART No.	MODEL NON OILTIGHT	MODEL OILTIGHT	COMMENTS	CONTACTS	ACTION
1571544-5	165SL533			3 N.O. & N.C.	PUSH ON/PUSH OFF
1571544-4	164SL522			2 N.O. & N.C.	PUSH ON/PUSH OFF
1571544-3	164SL511			1 N.O. & N.C.	PUSH ON/PUSH OFF
1571544-2	164SL22			2 N.O. & N.C.	MOMENTARY
1571544-1	164SL11			1 N.O. & N.C.	MOMENTARY
5-1437569-2	165SL533			3 N.O. & N.C.	PUSH ON/PUSH OFF
5-1437569-1	165SL522			2 N.O. & N.C.	PUSH ON/PUSH OFF
5-1437569-0	165SL33			3 N.O. & N.C.	MOMENTARY
4-1437569-9	165SL22			2 N.O. & N.C.	MOMENTARY
3-1437569-1	164SL533			3 N.O. & N.C.	PUSH ON/PUSH OFF
3-1437569-0	164SL522			2 N.O. & N.C.	PUSH ON/PUSH OFF
2-1437569-9	164SL511			1 N.O. & N.C.	PUSH ON/PUSH OFF
2-1437569-8	164SL5			-	PUSH ON/PUSH OFF
2-1437569-7	164SL33			3 N.O. & N.C.	MOMENTARY
2-1437569-6	164SL22			2 N.O. & N.C.	MOMENTARY
2-1437569-5	164SL11			1 N.O. & N.C.	MOMENTARY
2-1437569-4	164SL			-	MOMENTARY

REF AUGAT 80864

THIS DRAWING IS A CONTROLLED DOCUMENT. 3-21-89

TYCO ELECTRONICS CORPORATION  
 HARRISBURG, PA 17105-3608

164/165 SL SERIES  
 ILLUMINATED PUSHBUTTON

SIZE: A2 CASE CODE: C-2 DRAWING NO: 00779 CUSTOMER DRAWING SCALE: 1:1 SHEET: 1 of 1 REV: A1