

# Z/A/X/DZ Common Accessories

## Ordering Information

### ■ Terminal Covers (Sold Separately)

#### Common to Z, A, X, and DZ Models

The Terminal Cover is secured using the switch's side mounting screws and protects the casing and terminal wires from dust, vibration, or fingers, thus preventing terminal short-circuiting, ground faults, wire disconnection or improper connection, and electric shock accidents.

Terminal Covers made of phenol resin have five or six thin wall sections.

These sections can be torn open to provide holes for lead cables at desired points.

| Application      |                    | Soldering terminal use | Screw terminal use | Remarks                |
|------------------|--------------------|------------------------|--------------------|------------------------|
| Material         | Mounting direction | Model                  |                    |                        |
| Phenol resin     | Side mounting      | AP-A                   | AP-B               | ---                    |
| Metal press mold | Side mounting      | AP1-A                  | AP1-B              | Used for AP-A and AP-B |
| Vinyl chloride   | Side mounting      | AP-Z                   |                    | ---                    |

**Note:** Use the 'Screw-terminal use' Terminal Cover for DZ-series solder terminal models.

### ■ Separator (Sold Separately)

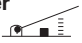



#### Common to Z, A, X, and DZ Models

**Model:** Separator for Z

### ■ Actuators (Sold Separately)

#### Common to Z and X Models

Pin Plunger Switches might need to be actuated by a cam or similar object, in which case, use one of the following Actuators according to the application.

| Actuator  |        | Common to Z and X models |  |
|---|--------|--------------------------|--|
| Hinge lever<br>                |        | ZAA-1                    |  |
| Hinge roller lever<br>         |        | ZAA-2                    |  |
| Panel mount plunger<br>        | Short  | ZAQ-3                    |  |
|   | Medium | ZAQ-2                    |  |
|   | Long   | ZAQ-1                    |  |
| Panel mount roller plunger<br> |        | ZAQ-22                   |  |

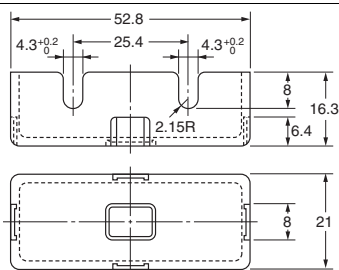
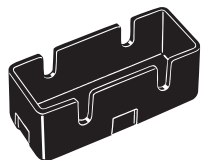
**Note:** ZAQ-22 is constructed of ferrous material. Therefore, it cannot be used with the X Switch, because of the permanent magnet contained within those models. Use the ZAQ-22 external panel mount roller plunger only with the Z or DZ switch.

# Dimensions

**Note:** Unless otherwise specified, all units are in millimeters and a tolerance of  $\pm 0.4$  mm ( $\pm 0.8$  mm for the AP-Z) applies to all dimensions.

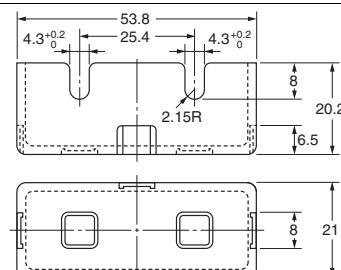
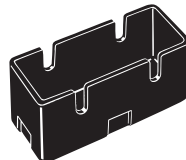
## Terminal Covers

### AP-A Soldering Terminal Use (Phenol Resin)



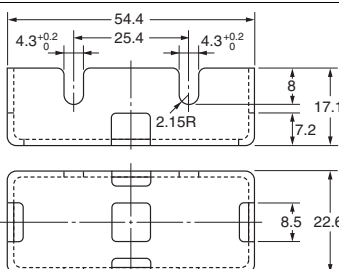
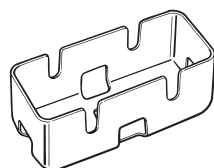
**Note:** The Cover has five thin, easy-to-separate portions for easy lead wire connections.

### AP-B Screw Terminal Use (Phenol Resin)



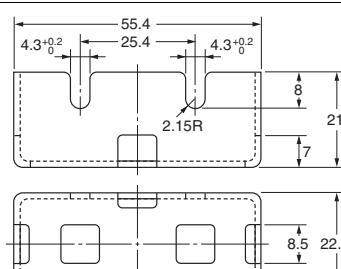
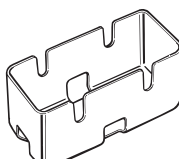
**Note:** The Cover has six thin, easy-to-separate portions for easy lead wire connections.

### AP1-A Soldering Terminal Use (Metal Press Mold)



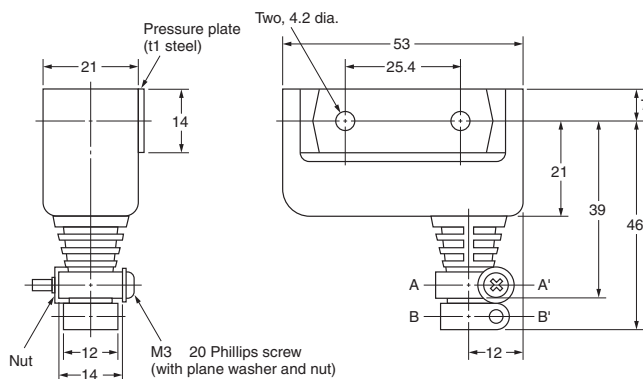
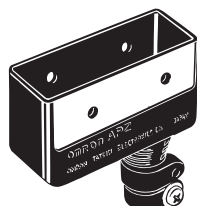
**Note:** 1. The Cover has five holes for easy lead wire connections.  
2. AP1-A should be used with the AP-A

### AP1-B Screw Terminal Use (Metal Press Mold)

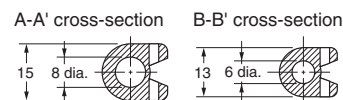


**Note:** 1. The Cover has six holes for easy lead wire connections.  
2. AP1-B should be used with the AP-B

### AP-Z Soldering or Screw Terminal Use (Vinyl Chloride)



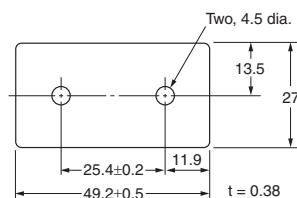
#### Cable Pull-out Dimension



**Note:** A 6-dia. or 8-dia. cable can be used by cutting the cable pull-out hole to the size of the cable to be used.

## Separator

### SEPARATOR FOR Z

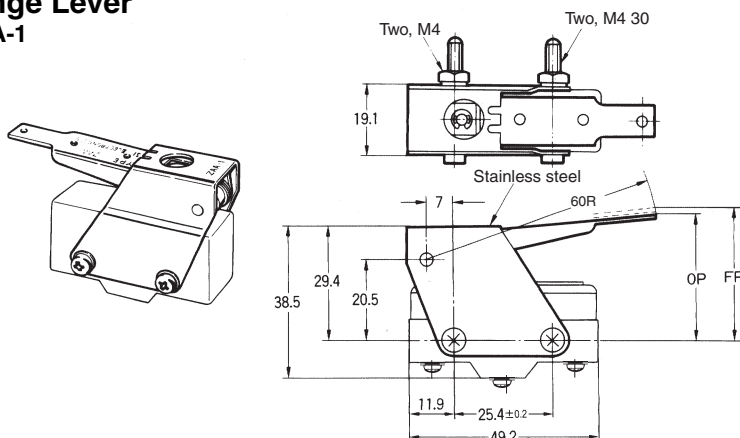


**Note:** The separator's material is EAVTC (Epoxide Alkyd Varnished Tetron Cloth) and its heat-resisting temperature is 130°C.

# Actuators

**Note:** 1. Unless otherwise specified, all units are in millimeters and a tolerance of  $\pm 0.4$  mm applies to all dimensions.  
2. These Actuators are not provided with Switches.

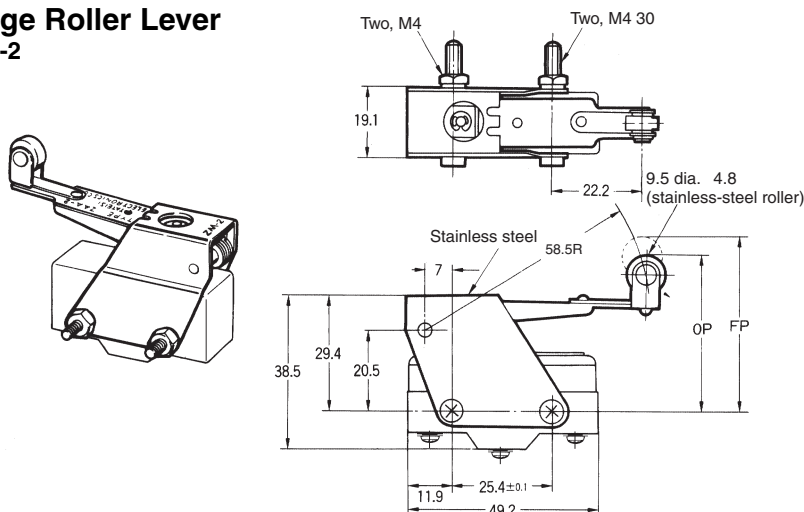
## Hinge Lever ZAA-1



| Model   | Z-15G-B           | X-10G-B |
|---------|-------------------|---------|
| OF max. | 500 gf            | 500 gf  |
| RF min. | 170 gf            | 170 gf  |
| PT max. | 6 mm              | 6 mm    |
| OT min. | 12.7 mm           | 12.7 mm |
| MD max. | 2.2 mm            | 3.3 mm  |
| FP max. | 32.9 $\pm$ 1.6 mm |         |

**Note:** This Actuator can be used with the Z-15G(-B) and X-10G(-B). When mounting the Switch, set the overtravel to between 32% and 100%, taking into consideration the operating body and the distance between the Actuator and the dog.

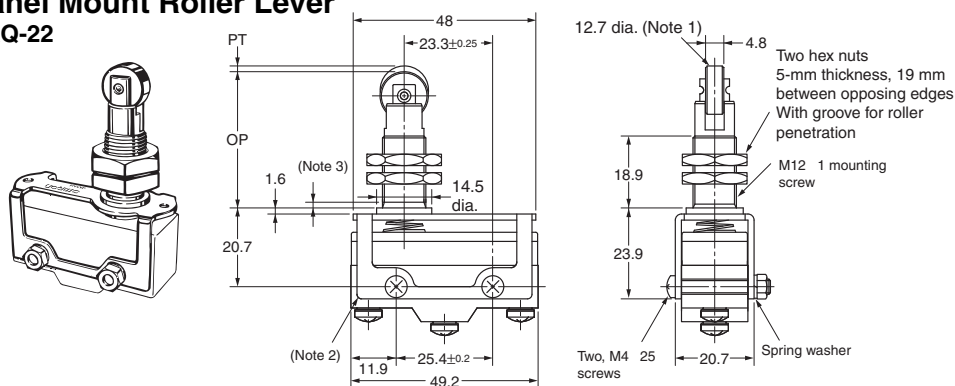
## Hinge Roller Lever ZAA-2



| Model   | Z-15G-B           | X-10G-B |
|---------|-------------------|---------|
| OF max. | 500 gf            | 500 gf  |
| RF min. | 170 gf            | 170 gf  |
| PT max. | 6 mm              | 6 mm    |
| OT min. | 12.7 mm           | 12.7 mm |
| MD max. | 2.2 mm            | 3.3 mm  |
| FP max. | 44.5 $\pm$ 1.6 mm |         |

**Note:** This Actuator can be used with the Z-15G(-B) and X-10G(-B). When mounting the Switch, set the overtravel to between 32% and 100%, taking into consideration the operating body and the distance between the Actuator and the dog.

## Panel Mount Roller Lever ZAQ-22



| Model   | ZAQ-22          |                   |
|---------|-----------------|-------------------|
|         | Z-15E-B         | DZ-10G-B          |
| OF max. | 850 gf          | 1,131 gf          |
| RF min. | 114 gf          | 114 gf            |
| PT max. | 2 mm            | 2 mm              |
| OT min. | 3.58 mm         | 1 mm              |
| MD max. | 0.15 mm         | 0.46 mm           |
| OP      | 37 $\pm$ 0.8 mm | 35.4 $\pm$ 1.2 mm |

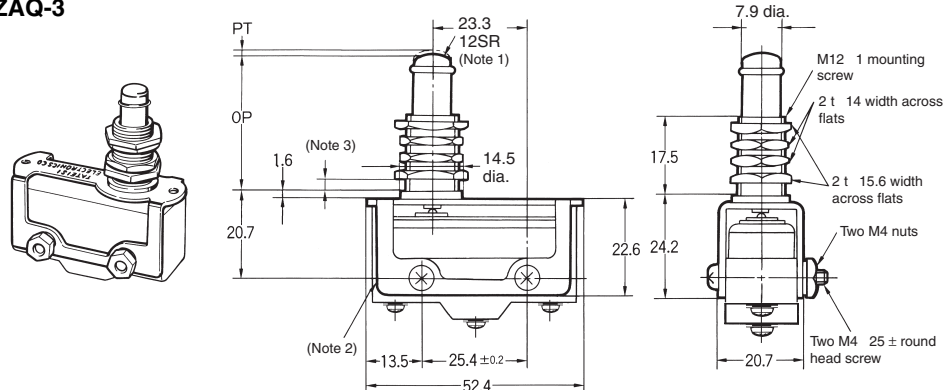
**Note:** This Actuator (panel mount roller plunger) can be used with standard pin plungers (Z-15G(-B), Z-15E(-B), and DZ-10G-1A(-1B)).

The ZAQ-22 is constructed of ferrous material. Therefore, it cannot be used with X switches due to the permanent magnet used within those models.

**Note:** 1. Stainless-steel pin plunger  
2. Bronze frame  
3. Incomplete screw section part with a maximum of 1.5 mm.

**Note:** 1. Unless otherwise specified, all units are in millimeters and a tolerance of  $\pm 0.4$  mm applies to all dimensions.  
2. These Actuators are not provided with Switches.

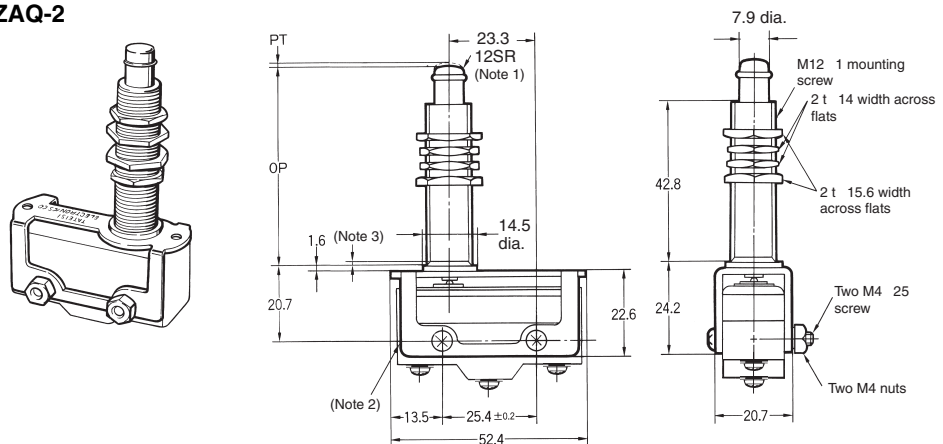
## Short Panel Mount Plunger ZAQ-3



| Model   | ZAQ-3             |         |
|---------|-------------------|---------|
|         | Z-15E-B           | X-10G-B |
| OF max. | 850 gf            | 550 gf  |
| RF min. | 114 gf            | 114gf   |
| PT max. | 0.8 mm            | 1 mm    |
| OT min. | 4.8 mm            | 4.5 mm  |
| MD max. | 0.15 mm           | 0.2 mm  |
| OP      | 27.8 $\pm$ 1.5 mm |         |

**Note:** 1. Stainless-steel pin plunger  
2. Bronze frame  
3. Incomplete screw section part with a maximum of 1.5 mm

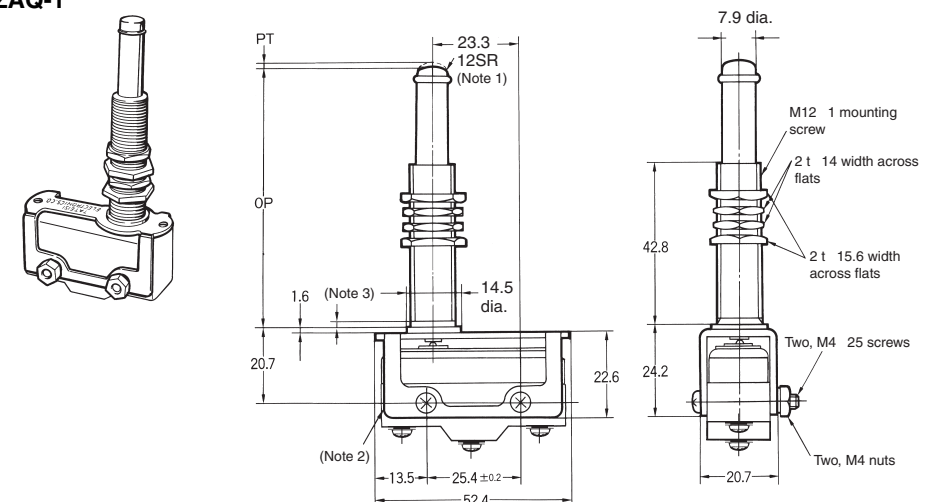
## Medium Panel Mount Plunger ZAQ-2



| Model   | ZAQ-2             |         |
|---------|-------------------|---------|
|         | Z-15E-B           | X-10G-B |
| OF max. | 850 gf            | 550 gf  |
| RF min. | 114 gf            | 114 gf  |
| PT max. | 0.8 mm            | 1 mm    |
| OT min. | 4.8 mm            | 4.5 mm  |
| MD max. | 0.15 mm           | 0.2 mm  |
| OP      | 53.2 $\pm$ 1.5 mm |         |

**Note:** 1. Stainless-steel pin plunger  
2. Bronze frame  
3. Incomplete screw section part with a maximum of 1.5 mm

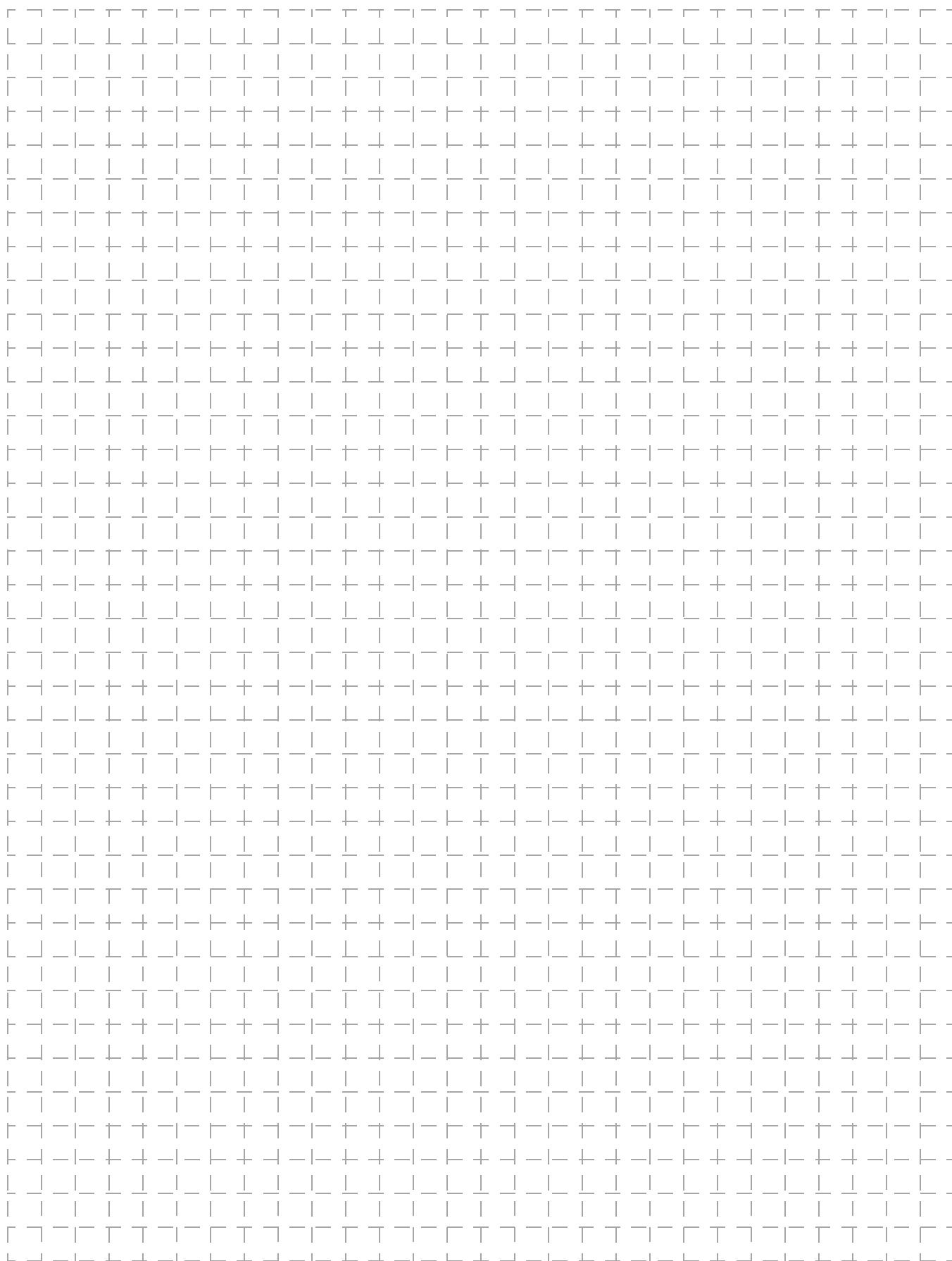
## Long Panel Mount Plunger ZAQ-1



| Model   | ZAQ-1             |         |
|---------|-------------------|---------|
|         | Z-15E-B           | X-10G-B |
| OF max. | 850 gf            | 550 gf  |
| RF min. | 114 gf            | 114 gf  |
| PT max. | 0.8 mm            | 1 mm    |
| OT min. | 20.6 mm           | 20.4 mm |
| MD max. | 0.15 mm           | 0.2 mm  |
| OP      | 69.1 $\pm$ 1.5 mm |         |

**Note:** 1. Stainless-steel pin plunger  
2. Bronze frame  
3. Incomplete screw section part with a maximum of 1.5 mm

**Note:** Except for the ZAQ-22, these actuators (panel mount plungers) can be used with standard pin plunger versions of the Z and X models. (Z-15G(-B), Z-15E(-B), X-10G(-B))



Downloaded from [Elcodis.com](http://Elcodis.com) electronic components distributor

All sales are subject to Omron Electronic Components LLC standard terms and conditions of sale, which can be found at [http://www.components.omron.com/components/web/webfiles.nsf/sales\\_terms.html](http://www.components.omron.com/components/web/webfiles.nsf/sales_terms.html)

**ALL DIMENSIONS SHOWN ARE IN MILLIMETERS.**

To convert millimeters into inches, multiply by 0.03937. To convert grams into ounces, multiply by 0.03527.

---

**OMRON**<sup>®</sup>

**OMRON ELECTRONIC  
COMPONENTS LLC**

55 E. Commerce Drive, Suite B  
Schaumburg, IL 60173

**847-882-2288**

**OMRON ON-LINE**

Global - <http://www.omron.com>

USA - <http://www.components.omron.com>

Cat. No. X303-E-1

11/10

Specifications subject to change without notice

Printed in USA

---

## **Z/A/X/DZ Common Accessories**