

4

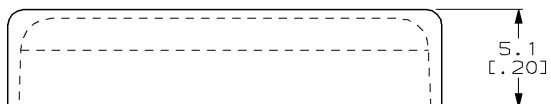
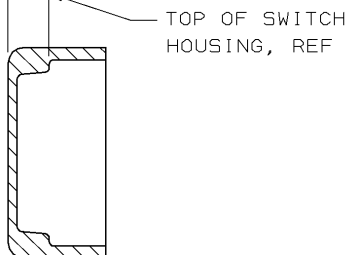
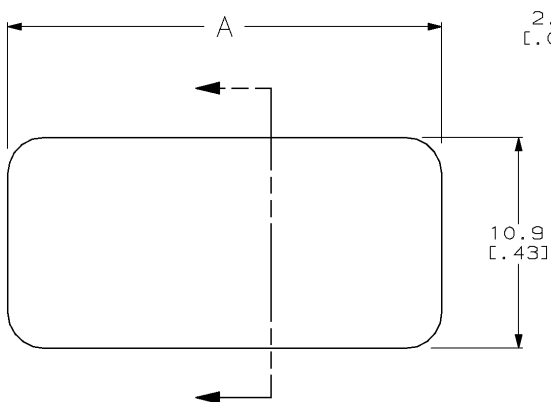
3

2

1

THIS DRAWING IS UNPUBLISHED. RELEASED FOR PUBLICATION BY AMP INCORPORATED. ALL RIGHTS RESERVED.

LOC	QTY	REVISIONS			
P	LTR	DESCRIPTION	DATE	DWN	APVD
AG	1	L	OBSOLETE -2 PER 0030-0243-96	1-30-97	RT JR



	22.6 [0.89]	8	435238-5
OBSOLETE	15.0 [0.59]	5	435238-2
	12.4 [0.49]	4	435238-1
A		NO. OF SWITCH POSITIONS	PART NO.

-5 SHOWN

DIMENSIONS		TOLERANCES UNLESS OTHERWISE SPECIFIED		CHK	DATE	AMP Incorporated Harrisburg, PA 17105-3608		
mm (INCHES)								
		0 PLC	±	R. TALLEY	5-9-95	COVER, PROTECTIVE, DIP SWITCH, TYPE C		
		1 PLC	±0.5 (0.02)	A. HOLT	5-9-95			
		2 PLC	±	T. SUDNIK	5-9-95			
		3 PLC	±					
		4 PLC	±			SIZE	CAGE CODE	DRAWING NO
MATERIAL		ANGLES	±			A3	00779	©-435238
POLYETHYLENE, NATURAL		FINISH	-					
CUSTOMER DRAWING						SCALE	SHEET	REV
						5:1	1 OF 1	L

AMP1470-19 REV 10/93