

(M) SKETCH 16022
ISSUE 1

MICRO SWITCH

A DIVISION OF MILWAUKEE-HONEYWELL REGULATOR COMPANY
FREEPORT, ILLINOIS

FED. MFR. CODE 91929

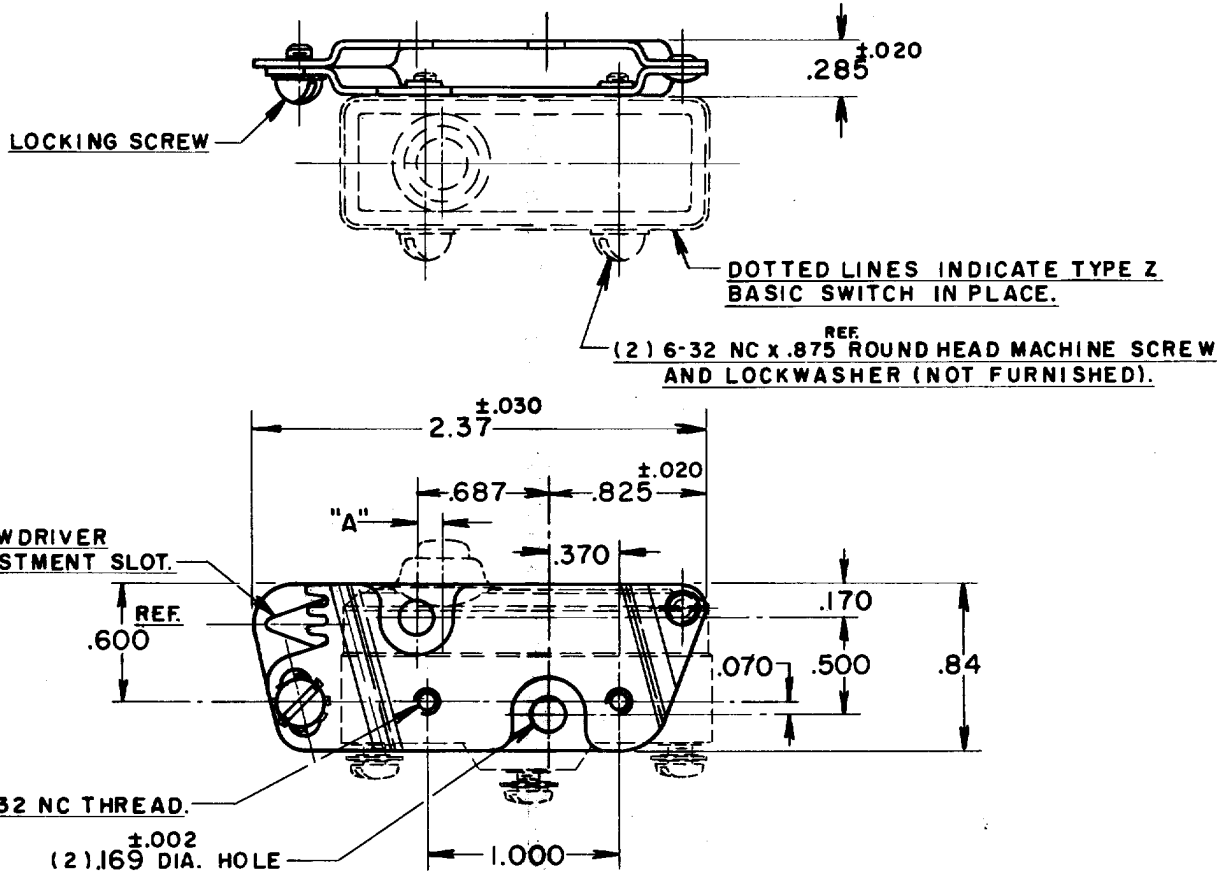
BRACKET - MOUNTING

CATALOG LISTING

8MA1

PLUNGER LOCATION

BASIC SWITCH TYPE	DIM. "A"
STANDARD	.057
TYPE Z	.140
TYPE A	.307



NOTE-

- 1-BRACKET IS SHOWN AT APPROX. MIDPOINT OF TOTAL .080 ADJUSTMENT OF OPERATING POSITION.
- 2-TO ADJUST OPERATING POSITION
 - (a) LOOSEN LOCKING SCREW SLIGHTLY.
 - (b) INSERT SCREWDRIWER WITH .188 TO .250 WIDE TIP IN ADJUSTMENT SLOT AND ROTATE IN DESIRED DIRECTION.
 - (c) TIGHTEN LOCKING SCREW.

THIS DRAWING COVERS A PROPRIETARY ITEM AND IS THE PROPERTY OF MICRO SWITCH, A DIVISION OF HONEYWELL. THIS DRAWING IS NOT TO BE COPIED OR USED WITHOUT THE APPROVAL OF MICRO SWITCH.

CHARACTERISTICS

ELECTRICAL DATA

SCALE FULL

CONTACT ARRANGEMENT

BREAK DISTANCE

DO NOT SCALE PRINT

UNLESS OTHERWISE SPECIFIED

DIMENSIONS ARE IN INCHES

TOLERANCES ARE:

ONE PLACE	(.0)	$\pm .030$
TWO PLACE	(.00)	$\pm .018$
THREE PLACE	(.000)	$\pm .008$
ANGLES		\pm

WEIGHT

8MA1

M

DRAWING NUMBER

ISSUE

REPLACES

RELEASE NO. SR 6517

CHECK

REVISIONS

4 JUNE '57

CHECK

13 JUNE '57

GCH

CHECK

31 MAY '57

DRAWN

FO-80378