

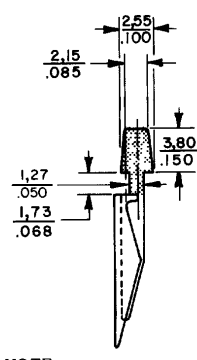
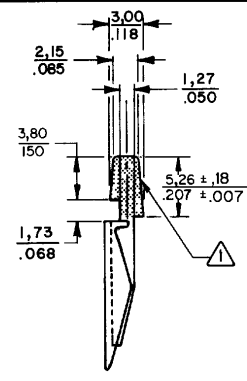
CATALOG LISTING  
**M** AML71 SERIES CHART 1  
 ISSUE 3  
 PAGE 1 OF 1  
 REPLACES AML 71 SERIES  
 RELEASE NO. CO-78498  
 CHECK  
 REVISIONS  
 A 201897  
 E & W  
 26 SEP 90  
 B 202506  
 S.S.L.  
 MAR91  
 DRAWN  
 RASTER  
 JUN 94  
 10 JUN 94  
 12 JUL 94  
 12 JUL 94  
 12 JUL 94

**MICRO SWITCH**  
 FREEPORT ILLINOIS U.S.A.  
 A DIVISION OF HONEYWELL  
 FED MFG CODE 91929

CATALOG LISTING  
**AML71 SERIES**  
 CHART 1

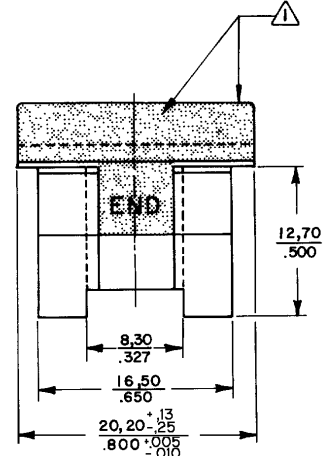
THIS DRAWING COVERS A PROPRIETARY ITEM AND IS THE PROPERTY OF MICRO SWITCH A DIVISION OF HONEYWELL THIS DRAWING IS NOT TO BE COPIED OR USED WITHOUT THE APPROVAL OF MICRO SWITCH

**AML BARRIERS**

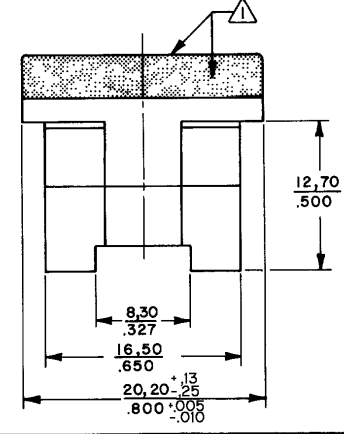


NOTE  
 △ MATTE FINISH THIS SURFACE

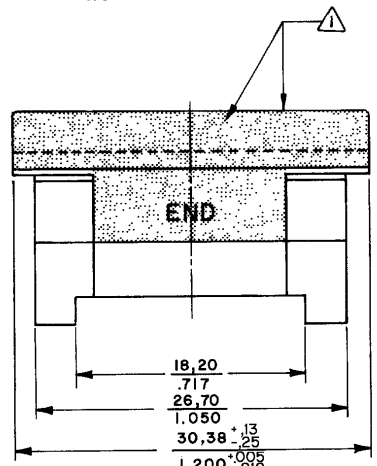
**SHORT SIDE BARRIER**



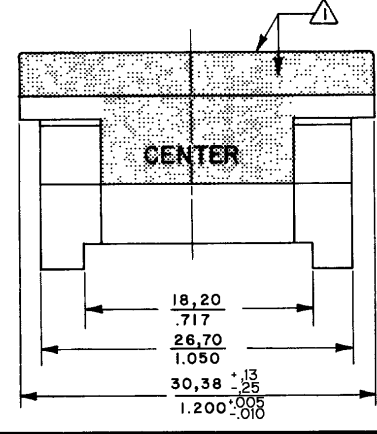
**SHORT SIDE BARRIER**



**LONG SIDE BARRIER**



**LONG SIDE BARRIER**



THIRD ANGLE PROJECTION

SCALE 3:1

DO NOT SCALE PRINT

TOLERANCES  
 APPLY TO DESIGN UNITS. CONVERSIONS ARE ONLY FOR REFERENCE. UNLESS NOTED, TOLERANCES ARE:

| NO. PLACES | IN      | DEC      | FRACTION | MM      | DEC     | FRACTION | MM      |
|------------|---------|----------|----------|---------|---------|----------|---------|
| 2          | .0005   | 1/2000   | 0.0005   | 0.005   | 1/200   | 0.005    | 0.005   |
| 3          | .00005  | 1/20000  | 0.00005  | 0.0005  | 1/2000  | 0.0005   | 0.0005  |
| 4          | .000005 | 1/200000 | 0.000005 | 0.00005 | 1/20000 | 0.00005  | 0.00005 |

DESIGN UNITS:  METRIC  US CUSTOMARY

RAW MATERIAL—COMMERCIAL STANDARD  
 MICRO SWITCH STANDARDS APPLY

DIMENSIONS ARE TO BE MET BEFORE PROTECTIVE COATINGS ARE APPLIED

WEIGHT