

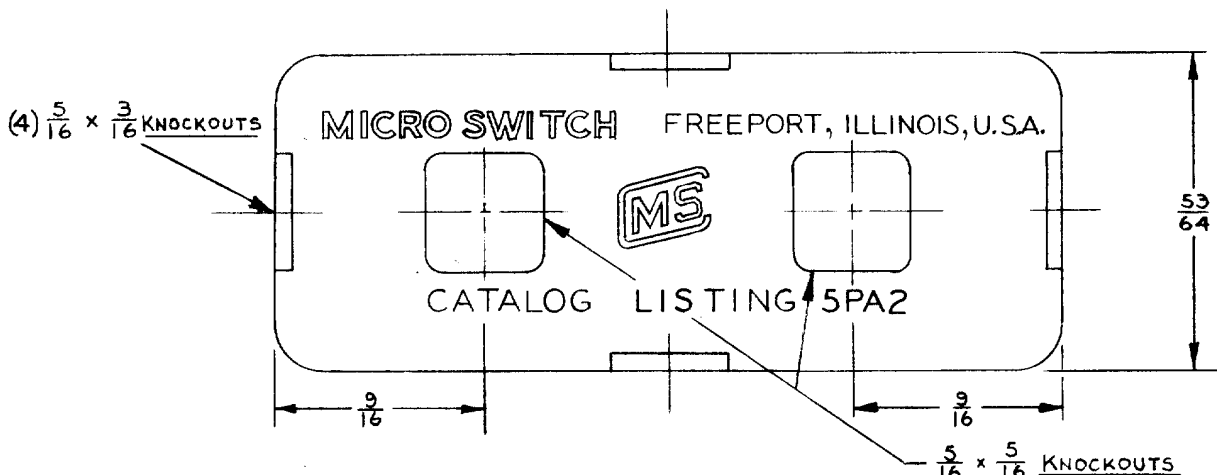
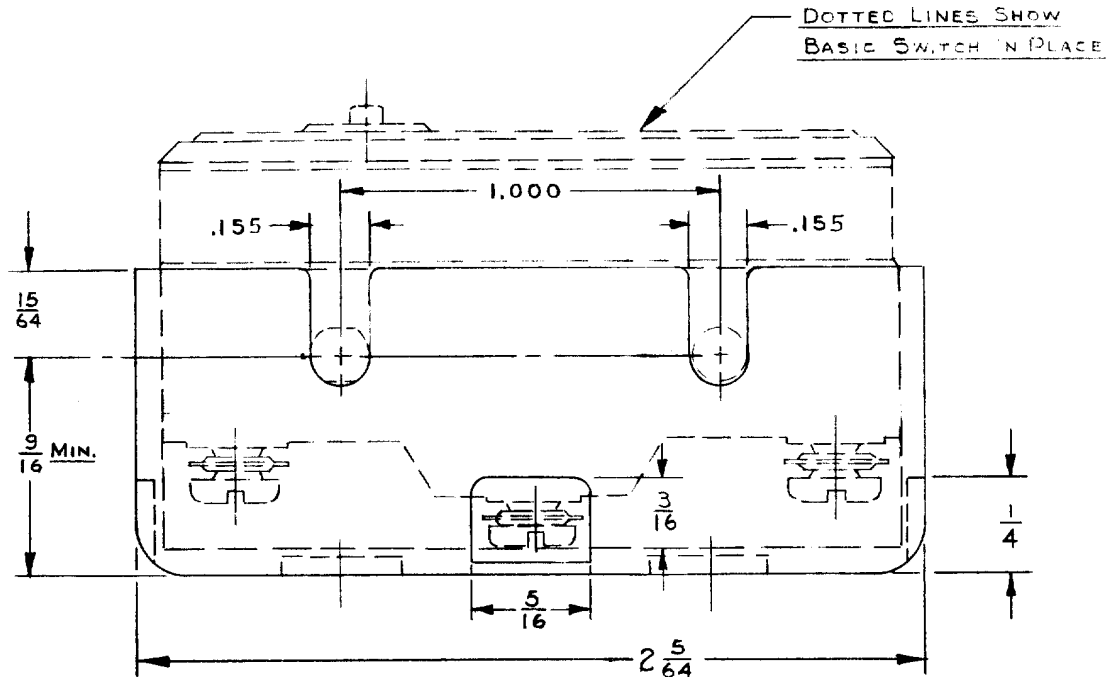
MICRO MS SWITCH
 FREEPORT, ILLINOIS, U.S.A.

TERMINAL-ENCLOSURE

★ CATALOG LISTING
 5 PA2

FED. MFR. CODE 91929

DRAWING NUMBER: M
 ISSUE: X3
 REVISIONS:
 CO 31858
 RER MAR 73
 CO62204
 WJK NOV 87
 CHECK: JRN 20 SEPT 51
 CHECK: HHC 12 SEPT 51
 CHECK: JRN 20 SEPT 51
 CHECK: HHC 12 SEPT 51
 RELEASE NO. SR-1854
 REPLACES: 5 PA2
 DRAWN: JH 11 SEPT 51



NOTE -
 1 - PLASTIC MATERIAL - GENERAL PURPOSE PHENOLIC

THIS DRAWING COVERS A PROPRIETARY ITEM AND IS THE PROPERTY OF MICRO SWITCH, A DIVISION OF HONEYWELL. THIS DRAWING IS NOT TO BE COPIED OR USED WITHOUT THE APPROVAL OF MICRO SWITCH.

CHARACTERISTICS	ELECTRICAL DATA	SCALE 2 TO 1
OPERATING FORCE DIFFERENTIAL FORCE RELEASE FORCE PRETRAVEL DIFFERENTIAL TRAVEL OVERTRAVEL	CONTACT ARRANGEMENT	DO NOT SCALE PRINT
	BREAK DISTANCE	UNLESS OTHERWISE SPECIFIED: DIMENSIONS ARE IN INCHES TOLERANCES ARE
		FRACTIONS $\pm \frac{1}{64}$ DECIMALS $\pm .005$ ANGLES \pm WEIGHT