

MICRO SWITCH

A DIVISION OF MILWAUKEE-HONEYWELL REGULATOR COMPANY
MILWAUKEE, WISCONSIN

FED. MFR. CODE 91929

ACTUATOR - SWITCH

CATALOG LISTING

MCA7711

S

MCA7711

M

DRAWING NUMBER

ISSUE 7

REVISIONS

A	CO 8520	R. L. Z.	20 SEPT 56
B	CO14866	O M W	20 SEP 60
C	73443	J W B	6 OCT 92
D	CO74624	K D R	13 JUL 93
E	CO 79303	S A D	6 MAR 95

REPLACES

RELEASE NO.

CHECK

36

M.J.L. 26 SEP 56

CHECK

36

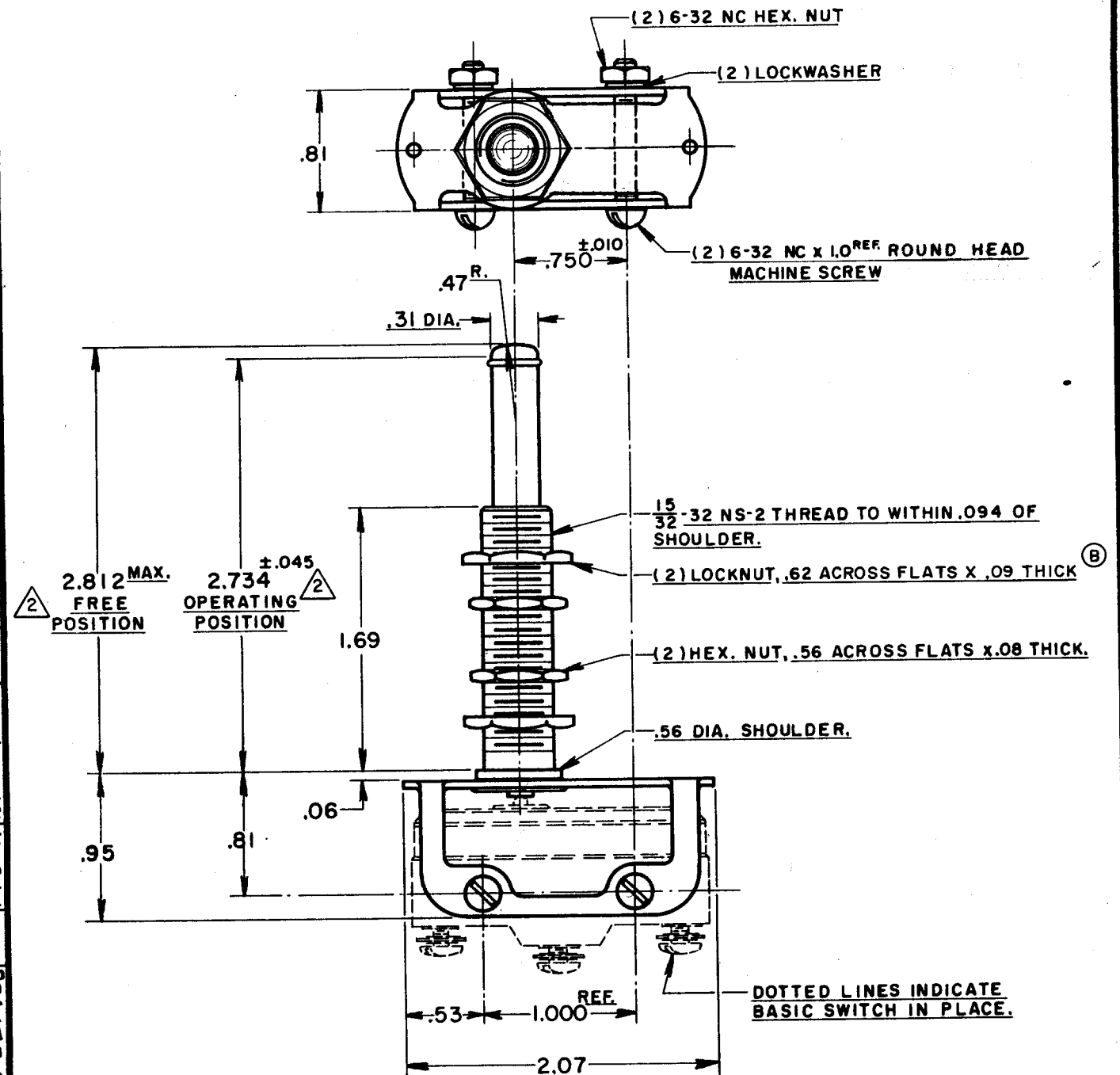
G.C.H. 28 SEPT 56

CHECK

56

R. L. Z. 20 SEPT. 56

(M) MCA7711
ISSUE 2



NOTES

- 1 - SCREWS, NUTS, AND LOCKWASHERS FURNISHED UNASSEMBLED
- 2 SLIGHT ROTATION MAY BE NECESSARY TO OBTAIN CHARACTERISTICS

THIS DRAWING COVERS A PROPRIETARY ITEM AND IS THE PROPERTY OF MICRO SWITCH, A DIVISION OF HONEYWELL. THIS DRAWING IS NOT TO BE COPIED OR USED WITHOUT THE APPROVAL OF MICRO SWITCH.

CHARACTERISTICS	ELECTRICAL DATA		SCALE - FULL
FULL OVERTRAVEL FORCE --- 5 1/2 LBS APPROX	CONTACT ARRANGEMENT	BREAK DISTANCE	DO NOT SCALE PRINT
OVERTRAVEL --- .781 MIN.			UNLESS OTHERWISE SPECIFIED DIMENSIONS ARE IN INCHES TOLERANCES ARE: ONE PLACE (.0) ±.030 TWO PLACE (.00) ±.015 THREE PLACE (.000) ±.008 ANGLES ±
			WEIGHT

CO-80378