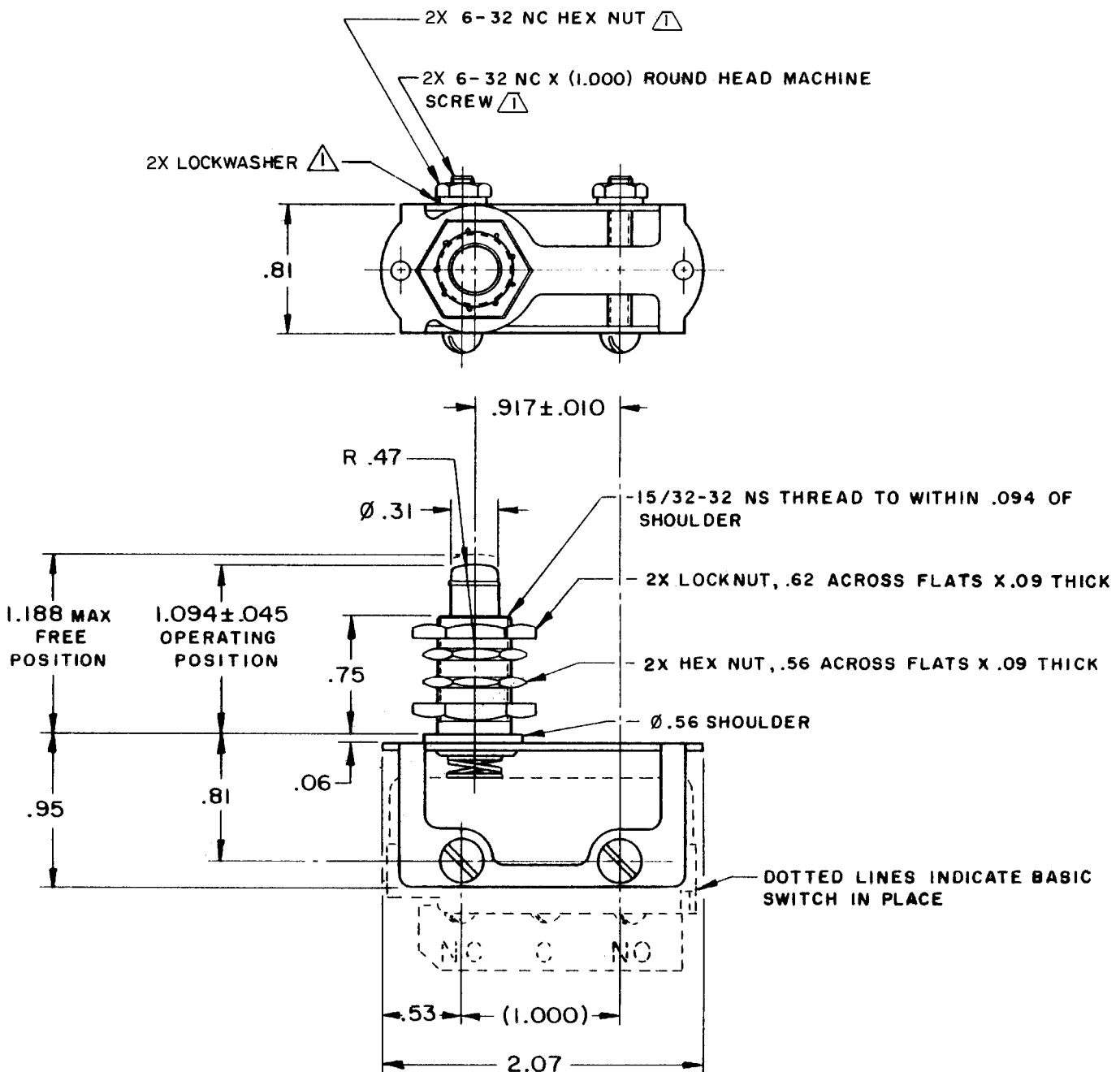


ACTUATOR-SWITCH

(M) MCD2711
 ISSUE 5
 REPLACES
 MCD2711
 PAGE 1 OF 1
 M
 DRAWING NUMBER
 9
 ISSUE
 REVISIONS
 A CO14866
 MBF
 18 AUG 60
 B CO19141
 HBW
 29 APR 64
 C CO
 79303
 SAD
 6 MAR 95
 D 201916
 DLT
 8 DEC 00
 CHECK
 25 AUG 60
 CHECK
 18 AUG 60
 DRAWN
 MBF
 FORMTEK
 FO-50378



NOTES
 \triangle FURNISHED UNASSEMBLED
 2 - ACTUATOR WILL PERFORM SATISFACTORILY IN TEMPERATURES TO MINUS 65° F

ANSI Y14.5M-1982 APPLIES

THIS DRAWING COVERS A PROPRIETARY ITEM AND IS THE PROPERTY OF MICRO SWITCH, A DIVISION OF MINNEAPOLIS-HONEYWELL REGULATOR CO. THIS DRAWING IS NOT TO BE COPIED OR USED WITHOUT THE APPROVAL OF MICRO SWITCH.

CHARACTERISTICS (WITH DT-26-A7 SWITCH INSTALLED)		ELECTRICAL DATA		SCALE FULL
OPERATING FORCE	2 1/2 LB MAX	CONTACT ARRANGEMENT	BREAK DISTANCE	DO NOT SCALE PRINT
FULL OVERTRAVEL FORCE	5 LB MAX			UNLESS OTHERWISE SPECIFIED
RELEASE FORCE	1/4 LB MIN			DIMENSIONS ARE IN INCHES
OVERTRAVEL	.141 MIN			TOLERANCES ARE:
				ONE PLACE (.0) \pm .030
				TWO PLACE (.00) \pm .015
				THREE PLACE (.000) \pm .005
				ANGLES \pm
				WEIGHT