

MICRO SWITCH

A DIVISION OF MINNEAPOLIS-HONEYWELL REGULATOR COMPANY
PROSPERITY, ILLINOIS

FED. MFR. CODE 91929

ACTUATOR-SWITCH

CATALOG LISTING

JV-20

5

JV-20

M

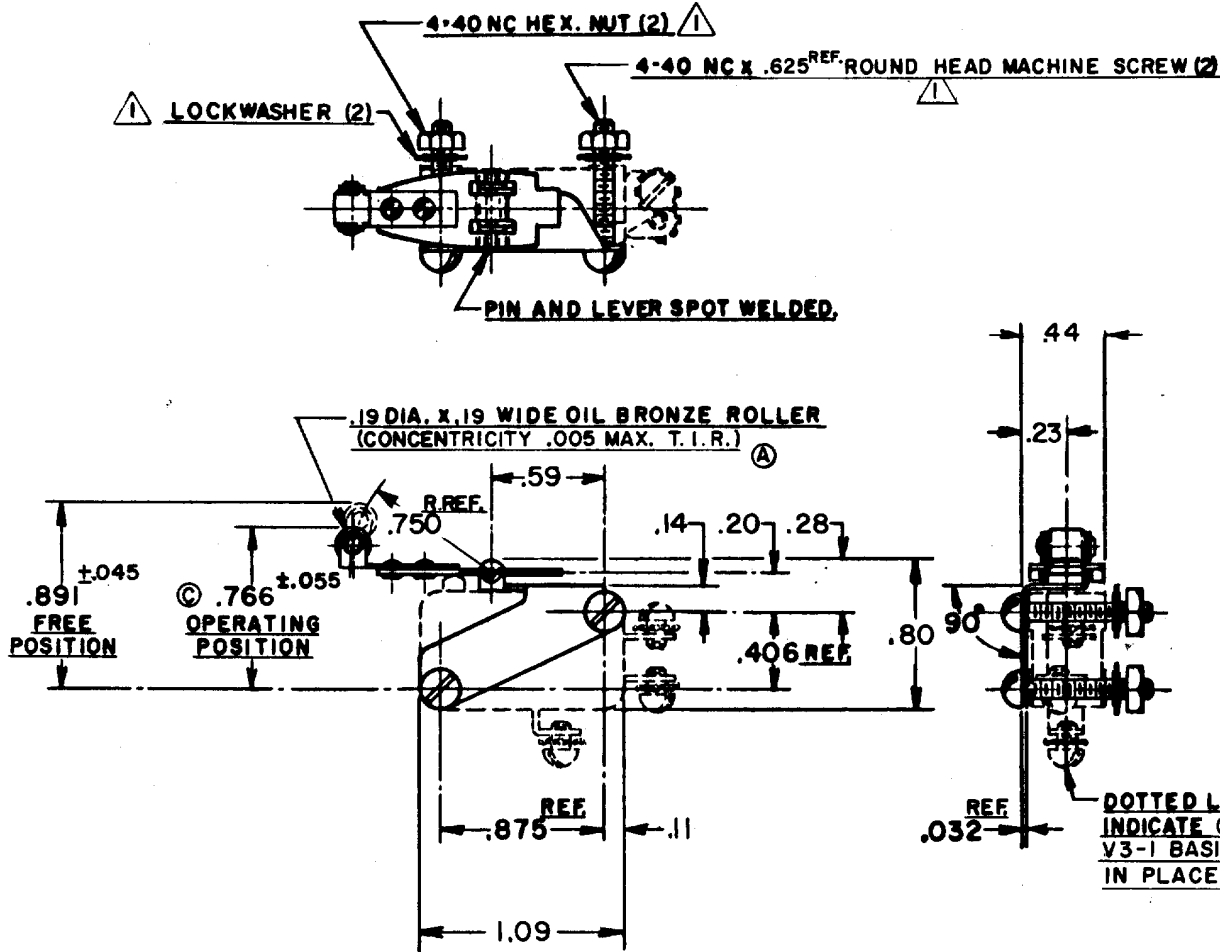
DRAWING NUMBER

ISSUE
13
10/12

REVISIONS

A	CO 10437	R. L. H.	9 MAY 58
B	CO 10820	JAV.	12 JULY 58
C	CO 13876	M B F	8 JULY 59
D	CO 26511	R E R	21 OCT 69
E	CO 34626	R E R	7 FEB 75
F	CO 74163	D H D	22 APR 93

(M) JV-20
REPLACES ISSUE 7
RELEASE NO. 11 MAY 56
CHECK 10 MAY 56
CHECK 10 MAY 56
CHECK 11 MAY 56
CHECK 56
DRAWN R. L. H. 9 MAY 56



NOTE -
 ⚠ FURNISHED UNASSEMBLED
 2- ACTUATOR NOT SATISFACTORY FOR USE ON V3-600 AND 700 SERIES SWITCHES. Ⓟ

THIS DRAWING COVERS A PROPRIETARY ITEM AND IS THE PROPERTY OF MICRO SWITCH. A DIVISION OF HONEYWELL. THIS DRAWING IS NOT TO BE COPIED OR USED WITHOUT THE APPROVAL OF MICRO SWITCH.

CHARACTERISTICS WITH V3-1 BASIC SWITCH INSTALLED	ELECTRICAL DATA		SCALE FULL
OPERATING FORCE ----- 5 OZ. MAX.	CONTACT ARRANGEMENT	BREAK DISTANCE	DO NOT SCALE PRINT
RELEASE FORCE ----- 1 OZ. MIN.			UNLESS OTHERWISE SPECIFIED
PRETRAVEL ----- .198 MAX.			DIMENSIONS ARE IN INCHES
DIFFERENTIAL TRAVEL ----- .078 MAX.			TOLERANCES ARE:
OVERTRAVEL ----- .062 MIN.			ONE PLACE (.0) ±.030
			TWO PLACE (.90) ±.015
			THREE PLACE (.000) ±.005
			ANGLES ± 2°
			WEIGHT .027 LB MAX Ⓟ