

MICRO SWITCH

A DIVISION OF MINNEAPOLIS-HONEYWELL REGULATOR COMPANY
FREEPORT, ILLINOIS

FED. MFR. CODE 91929

ACTUATOR — SWITCH

CATALOG LISTING
JX-45

5

SKETCH 20349
ISSUE 1

REPLACES

RELEASE NO. SR 7759

CHECK B L J 8 SEPT 58

CHECK

REDESIGNED

CHECK B L J 8 SEPT 58

CHECK

REDESIGNED

CHECK B L J 8 SEPT 58

CHECK

REDESIGNED

CHECK B L J 8 SEPT 58

CHECK

REDESIGNED

CHECK B L J 8 SEPT 58

CHECK

REDESIGNED

CHECK B L J 8 SEPT 58

CHECK

REDESIGNED

CHECK B L J 8 SEPT 58

CHECK

REDESIGNED

JX-45

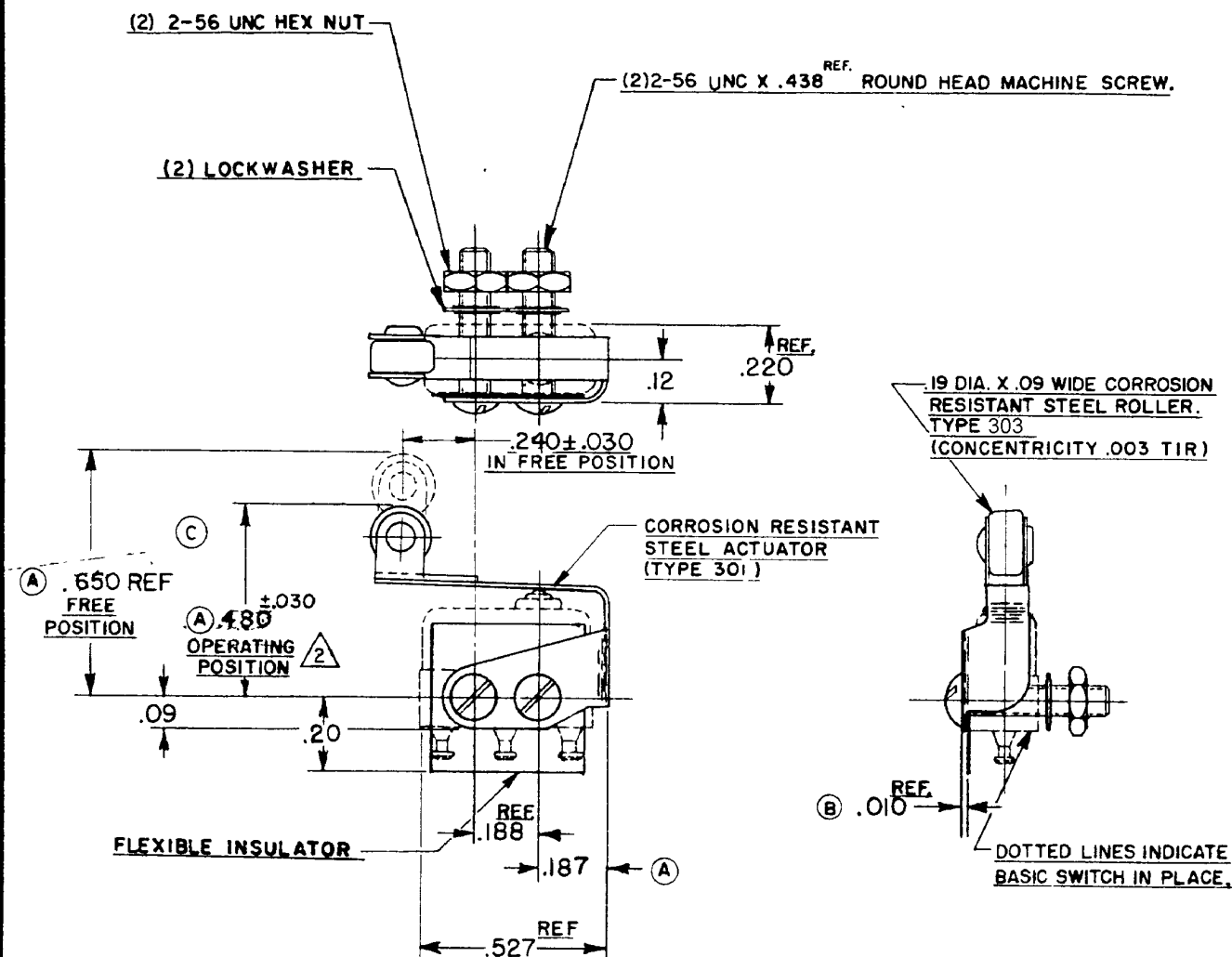
M

DRAWING
NUMBER

ISSUE
11

REVISIONS

A	CO13644	M B F	27 APR 59
B	CO15829	M B F	17 APR 61
C	CO22579	OMW	1 MAY 67
D	CO23793	W E G	6 FEB 68
E	CO25480	G F S	2 MAR 69
F	CO47771	C J H	17 MAY 80
G	CO74163	D H D	22 APR 93
H	CO82929	D L T	10 MAY 96
J	CO015428	SPK	14SEP05



NOTE —

- 1- SCREWS, NUTS, LOCKWASHERS AND INSULATOR FURNISHED UNASSEMBLED.
- 2- SLIGHT ROTATION BETWEEN BASIC AND ACTUATOR MAY BE NECESSARY TO OBTAIN OPERATING POSITION

CHECK RJ 14SEP05

THIS DRAWING COVERS A PROPRIETARY ITEM AND IS THE PROPERTY OF MICRO SWITCH A DIVISION OF MINNEAPOLIS-HONEYWELL REGULATOR CO THIS DRAWING IS NOT TO BE COPIED OR USED WITHOUT THE APPROVAL OF MICRO SWITCH

CHARACTERISTICS WITH ISX1-T BASIC SWITCH INSTALLED

OPERATING FORCE — — — — — 7 OZ. MAX,
RELEASE FORCE — — — — — 1 OZ. MIN.
DIFFERENTIAL TRAVEL — — — — — .025 MAX.
OVERTRAVEL — — — — — .015 MIN.

(A)

ELECTRICAL DATA

CONTACT ARRANGEMENT

BREAK DISTANCE

SCALE 2 TO 1

DO NOT SCALE PRINT

UNLESS OTHERWISE SPECIFIED
DIMENSIONS ARE IN INCHES
TOLERANCES ARE:
ONE PLACE (.0) ± .030
TWO PLACE (.00) ± .015
THREE PLACE (.000) ± .005
ANGLES ± .005

WEIGHT 1.85g APPROX.

FO-50378

DRAWN

R.E.R. 4 SEPT 58