

MICRO SWITCH

A DIVISION OF MINNEAPOLIS-HONEYWELL REGULATOR COMPANY
FARGO, MINN.

FED. MFR. CODE 91929

ACTUATOR-SWITCH

CATALOG LISTING

JV-1

5

(M) JV-1

REPLACES ISSUE 4

JV-1

M

DRAWING NUMBER

ISSUE 28

78

RELEASE NO.

CHECK

19 JUNE 59

CHECK

6 FEB 75

CHECK

12 JUNE 59

CHECK

12 JUNE 59

CHECK

12 JUNE 59

CHECK

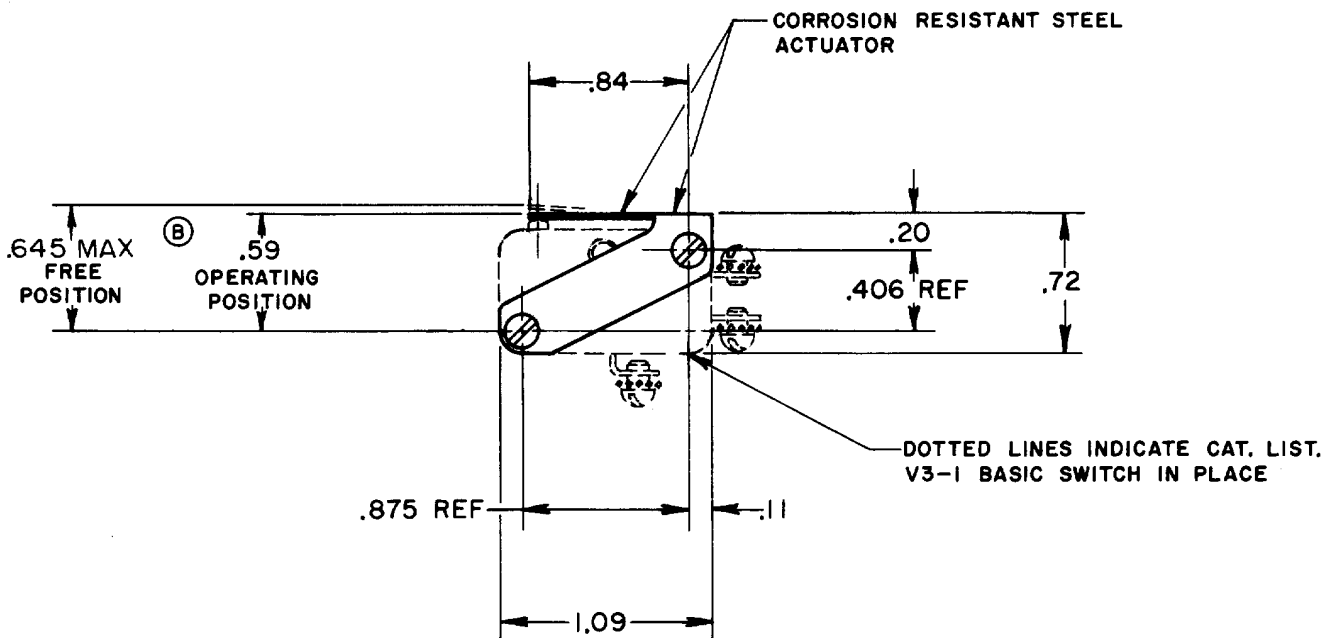
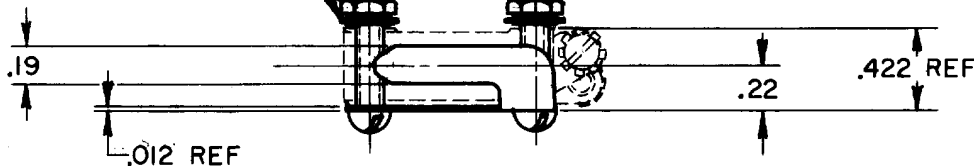
12 JUNE 59

CHECK

4-40 NC X .625 REF ROUND HEAD MACHINE (2) \triangle

4-40 NC HEX NUT (2) \triangle

LOCKWASHER (2) \triangle



NOTE - \triangle - FURNISHED UNASSEMBLED

THIS DRAWING COVERS A PROPRIETARY ITEM AND IS THE PROPERTY OF MICRO SWITCH, A DIVISION OF MINNEAPOLIS-HONEYWELL REGULATOR CO. THIS DRAWING IS NOT TO BE COPIED OR USED WITHOUT THE APPROVAL OF MICRO SWITCH.

CHARACTERISTICS WITH V3-1 BASIC SWITCH INSTALLED

OPERATING FORCE	18 OZ MAX
RELEASE FORCE	6 OZ MIN
PRETRAVEL	.047 MAX
DIFFERENTIAL TRAVEL	.016 MAX
OVERTRAVEL	.031 MIN

ELECTRICAL DATA

CONTACT ARRANGEMENT	BREAK DISTANCE
---------------------	----------------

SCALE FULL

DO NOT SCALE PRINT

UNLESS OTHERWISE SPECIFIED DIMENSIONS ARE IN INCHES

TOLERANCES ARE:
 ONE PLACE (.0) \pm .030
 TWO PLACE (.00) \pm .015
 THREE PLACE (.000) \pm .005
 ANGLES \pm

WEIGHT

FO-50378

DRAWN

NHL