

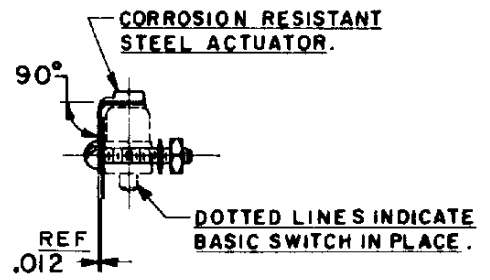
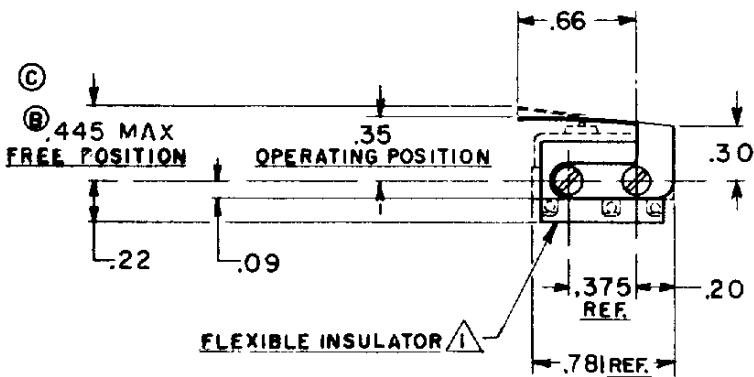
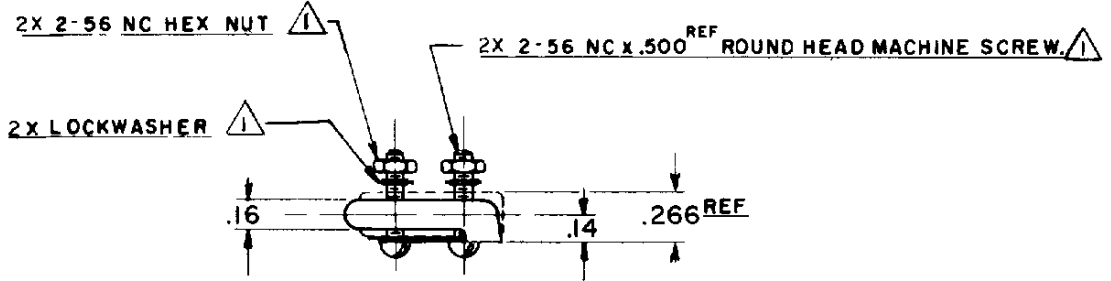
**MICRO SWITCH**  
 A DIVISION OF MINNEAPOLIS-HONEYWELL REGULATOR COMPANY  
 FREEPORT ILLINOIS  
 FED. MFR CODE 91929

**ACTUATOR - SWITCH**

CATALOG LISTING  
**JS-2**

(M) JS-2  
 ISSUE 4

JS-2	M	DRAWING NUMBER	ISSUE	X 8 9	CHECK	REPLACES	CHECK
						RELEASE NO.	
REVISIONS A 602800 K.F.M. 3 FEB 56 B C012901 M.B.F. 11 MAY 59 C C017304 M.B.F. 6 JUNE 63 D C047771 E C078303 DLT 7 MAR 66 F G H I J K L M N O P Q R S T U V W X Y Z							
74-86	DRAWN	K.F.M.	3 FEB. 56	CHECK	3 FEB. 56		



NOTE -  
 (1) FURNISHED UNASSEMBLED

THIS DRAWING COVERS A PROPRIETARY ITEM AND IS THE PROPERTY OF MICRO SWITCH A DIVISION OF HONEYWELL THIS DRAWING IS NOT TO BE COPIED OR USED WITHOUT THE APPROVAL OF MICRO SWITCH

CHARACTERISTICS WITH ISM SWITCH INSTALLED		ELECTRICAL DATA		SCALE FULL
OPERATING FORCE - - - 10 OZ. MAX.		CONTACT ARRANGEMENT	BREAK DISTANCE	DO NOT SCALE PRINT
RELEASE FORCE - - - (C) 2 OZ. MIN.				UNLESS OTHERWISE SPECIFIED DIMENSIONS ARE IN INCHES
PRETRAVEL - - - .078 MAX.				<b>TOLERANCES ARE:</b>
DIFFERENTIAL TRAVEL - - - 0.15 MAX				ONE PLACE (.0) ±.030
OVERTRAVEL - - - 0.15 MIN.				TWO PLACE (.00) ±.015
(B)				THREE PLACE (.000) ±.005
				ANGLES ± 2°
				WEIGHT