

Weller[®]

WSM Compact Soldering Stations

The world's first high performance battery powered soldering station.

August 2010





WSM Compact Soldering Stations



WSM1

Two Versions:

Corded
Cat. No. WSM1

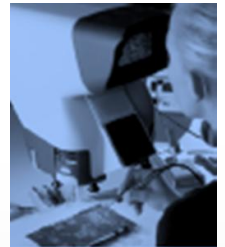


Corded AND
Battery Powered
Cat. No.
WSM1C



Another Weller First!

- Why WSM?
 - Makes micro tool technology (WMRP) accessible to a wider market
 - Achieves micro tool performance for 32% less than WD1000M
 - Introduce an industry first – a high performance, battery powered soldering station (WSM1C)
- Target markets
 - R & D (WSM1 corded version)
 - Repair and rework sector (WSM1C cordless version)





WSM Compact Soldering Stations

Compact, lightweight, and powerful

Just put the Weller micro pencil in your hand and you will see and feel the difference. Incomparable comfort and control is yours.

- Motion sensor technology initiates power to the pencil after the setback period. Saves energy and extends tip lifetime.
- The setback feature saves energy and extends tip lifetime
- Integrated heater-in-tip design allows for 4 second heat-up time with just 40 watts of power
- High efficiency RT3 (.05", 1.3 mm) micro-soldering chisel tip with integrated heating element

Easy to use

Operation is intuitive. You don't need tons of training. You can be productive immediately.

- LCD display screen with touch control
- Special functions for customized settings (auto-off, setback timer, offset, °F / °C, lockout)
- Two programmable pre-set temperatures
- Safety rest with brass wool tip dry cleaning system

Weller quality through and through

- The quality you have come to expect from a name you trust

Made in
Germany

Integrated tip design

Weller's unique stereo jack plug system is fast, convenient, and secure.



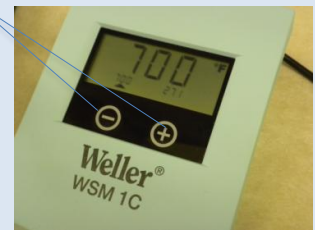
Easy to use

LCD display screen with touch control



Convenience

Two programmable pre-set temperature buttons. Set your favorite temperatures and forget it.



North America Application Support | (866) 498-0484 | weller-na@apextoolgroup.com



What's in the box?



Ordering information:

TWSM1 Digital Soldering Station,
50W, 100-240 V

WSM1C Digital Rechargeable
Soldering Station, 50W, 100-240 V
0058751880 Car Adapter, 12 V, for
WSM1C



A complete one-user setup is included:

- 1 Soldering station with hard-wired pencil
- 2 Tool holder with brass wool tip dry cleaner
- 3 RT3 micro-chisel tip
- 4 ESD grounding plug
- 5 AC power supply / charger
- 6 North America power cord
- 7 European power cord (2 round prongs)
- 8 Instructions



Everything you need to get started.



Tips and Accessories

RT SERIES TIPS FOR WMRP MICRO SOLDERING PENCIL

	Model	Description	Width A	Thickness B	Order No.
	RT1	Needle tip	0.2 mm / .008"	–	0054460199
	RT1SC	Micro Chisel tip	0.4mm / .016"	0.15 mm / .006"	0054461299
	RT2	Point tip	Ø 0.8 mm .032"	–	0054460299
	RT3	Chisel shape, straight	1.3 mm .051"	0.4 mm .0157"	0054460399
	RT4	Chisel shape, straight	1.5 mm .059"	0.4 mm .0157"	0054460499
	RT5	Chisel shape, bent, 30°	0.8 mm .032"	0.4 mm .0157"	0054460599
	RT6	Round shape, beveled, 45°	Ø 1.2 mm .047"	–	0054460699
	RT7	Knife tip, 45°	2.2 mm .0866"	–	0054460799
	RT8	Chisel tip, straight	2.2 mm .087"	0.4 mm .016"	0054460899
	RT9	Chisel tip, straight	0.8 mm .032"	0.4 mm .016"	0054460999
	RT10	Gull wing for drag soldering	1.2 mm .047"	2.0 mm .079"	0054461099
	RT11	Chisel Tip	3.6 mm .142"	0.9 mm .035"	0054461099

Additional tip details available at www.cooperhandtools.com/weller
RT-MIL tips are NOT compatible with WSM1 or WSM1C



12 volt car charger
For WSM1C
Cat. No. 0058751880



Don't forget the fume extraction!

Environmental, safety, and health concerns are major industry drivers. Protect your investment with Weller Zero Smog.



For more information:
(866) 498-0484
Weller-na@apextoolgroup.com
www.wellerzerosmog.com



North America Application Support | (866) 498-0484 | weller-na@apextoolgroup.com



Specification Comparison Chart

	Weller WSM1	Weller WSM1C	Weller WD1000M	JBC BD-1BA	Hakko FX-951	Metcal MX-5020
Temperature Range	200 - 750 F (50 - 400 C)	201 - 750 F (50 - 400 C)	200-850 F (100 - 450 C)	200 - 740 F (90 - 450 C)	400 - 840 F (200 - 450 C)	700 UFTC Series - Max. Temp 775 F (412 C)
Heat up time zero to 700F	10 sec.	10 sec.	10 sec.	4 sec.	20 Sec.	8 sec.
Output power	40 W / 12 V	40 W / 12 V	40 W / 24 V	20 W / 24V	70 W / 24V	50 W / 24V
Power supply	100V - 240V	100V - 240V	120V	120V	120V	100V - 240V
Touch screen	Yes	Yes	No	No	No	No
Temperature Lockout	Yes	Yes	Yes	Yes	Yes	No
Temperature pre-set buttons	2	2	3	No	No	N/A
Replaceable pencil?	No	No	Yes	Yes	Yes	Yes
ESD Safe?	No. Optional grounding kit available soon.	No. Optional grounding kit available soon.	Yes	Yes	Yes	Yes
MIL-SPEC Compliant?	No	No	No. MIL-SPEC pencil and tips available.	Yes	Yes	Yes
Menu Features: Auto Off, Setback Timer, Lockout, Offset, °F/°C.	Yes	Yes	Yes	Yes, Auto setback and Hibernation modes with a pin # lockout	Yes, Auto setback and sleep modes, °F & °C settings and a key card lockout	Setback
Battery Supply	N/A	Lithium Ion	N/A	N/A	N/A	N/A
Recharge time	N/A	20 min.	N/A	N/A	N/A	N/A
Run time	N/A	60 min.	N/A	N/A	N/A	N/A
Tip selection	12	12	12	14	81	13
Setback feature	Yes Accelerometer / Setback timer	Yes Accelerometer / Setback timer	Yes Stop+Go stand / Setback timer	Handpiece Placement in the stand	Handpiece Placement in the stand	Yes, Sleep Stand
Sugg. List Price	\$ 365.00	\$ 435.00	\$ 523.95	\$ 375.00	\$ 263.10	\$ 675.00
Average Tip Price	\$ 34.00	\$ 34.00	\$ 34.00	\$29.00 standard; \$35.00 Long Life	\$10.40 standard; \$48.00 for most expensive	\$ 29.00



Back Labels



North America Application Support | (866) 498-0484 | weller-na@cooperindustries.com



Pricing Information

Cat. No.	Order No.	Description	Sugg. List Price – US	Sugg. List Price - Canada
WSM1	TWSM1	Digital Soldering Station, 40W, 120V	\$365.00	\$400.00
WSM1C	WSM1C	Digital Rechargeable Soldering Station, 40W, 120V	\$450.00	\$500.00
0058751880	T0058751880	Car Adapter, 12V, for WSM1C	\$12.00	\$13.20
RT1	T0054460199	Needle Tip Cartridge for WMRP	\$32.44	\$37.46
RT1SC	T0054461299	Micro Chisel Tip Cartridge for WMRP	\$47.25	\$54.56
RT2	T0054460299	Fine Point Tip Cartridge for WMRP	\$32.44	\$37.46
RT3	T0054460399	Chisel Tip Cartridge, WMRP	\$32.44	\$37.46
RT4	T0054460499	Chisel Tip Cartridge for WMRP	\$32.44	\$37.46
RT5	T0054460599	Bent Chisel Tip Cartridge, WMRP	\$32.44	\$37.46
RT6	T0054460699	Round Sloped Tip Cartridge, WMRP	\$32.44	\$37.46
RT7	T0054460799	Knife Tip Cartridge for WMRP	\$34.07	\$39.34
RT8	T0054460899	Chisel Tip Cartridge, WMRP	\$32.44	\$37.46
RT9	T0054460999	Chisel Tip Cartridge, WMRP	\$32.44	\$37.46
RT10	T0054461099	Gull Wing Tip Cartridge, WMRP	\$32.44	\$37.46
RT11	T0054461199	Chisel Tip Cartridge for WMRP	\$49.00	\$50.00



WSM1 is priced 32% lower than WD1000M