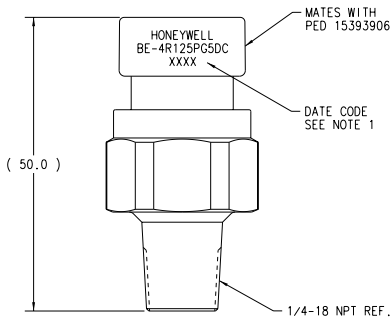
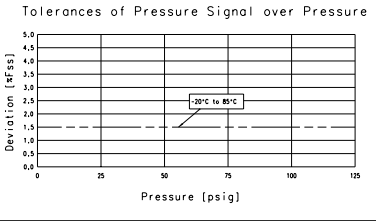
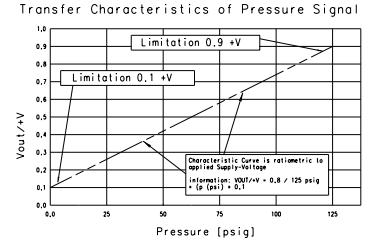


| Part                   | Material             |
|------------------------|----------------------|
| Contact pin            | CDA 210 (brass)      |
| Surface Treatment      | Tin                  |
| Connector body - black | PBT 30% GF           |
| Sensor housing         | 1215 Steel           |
| Housing plating        | Zinc                 |
| Pressure Port          | 17-4 Stainless Steel |

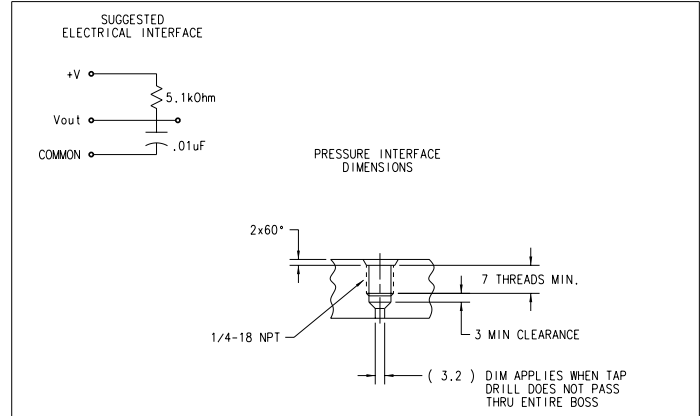
**Specifications:**

|  |                  |
|--|------------------|
| Maximum Tightening Torque                                    | 20 Nm            |
| Recommended Tightening Torque                                | 15 Nm            |
| Current Consumption  | 10 mA            |
| Supply Voltage   | 4.75 to 5.25 VDC |
| Output Current   | 2 kOhm min Load  |
| Burst Pressure   | 375 psi          |
| Proof Pressure   | 250 psi          |
| This Sensor is Reverse Polarity/Overvoltage Protected to 14V |                  |
| Temperature Range  | -20°C to 85°C    |



**NOTES:**

1. INSTALLATION INSTRUCTION: WRAP 3.5 TO 4 TURNS OF 0.076mm (.003") THICK TEFLON THREAD SEALANT TAPE AND TORQUE SENSOR TO 15-20 Nm.
2. DATE CODE CONTAINS 4 DIGITS (XXXX) THE FIRST DIGIT SIGNIFIES THE YEAR THE LAST THREE DIGITS SIGNIFY THE DATE OF THE YEAR
3. VALIDATED TO TEST SPEC. 88842055



|   |  |  |  |  |  |  |
|---|--|--|--|--|--|--|
| THIS DRAWING AND SPECIFICATIONS ARE THE PROPERTY OF HONEYWELL SENSING AND CONTROL AND SHALL NOT BE REPRODUCED, COPIED, OR USED IN ANY MANNER FOR MANUFACTURE OR SALE OF SEPARATE DEVICES WITHOUT WRITTEN PERMISSION OF HONEYWELL SENSING AND CONTROL. |  | DRAWING TO BE INTERPRETED USING ASME Y14.1M-1994 CHANGES TO BE DONE ON CAD SYSTEM ONLY |  | <input type="checkbox"/> INCH<br><input checked="" type="checkbox"/> 05 MM | DRAWN BY<br>10/15/01<br>CHECKED BY<br>T. PHAM<br>10/15/01<br>ENG. APPR.<br>T. PHAM<br>05/22/02<br>E. TR. N.<br>44106<br>05/22/02<br>SCALE<br>2:1 | <b>Honeywell</b><br><b>Sensing and Control</b><br>1100 41/02 14 Road<br>Shelton, CT 06484-3699 |
| MAKE FROM   |  | MATERIAL   |  | PART NAME  |  |  |
| FINISH  |  | FINISH   |  | FINAL ASSEMBLY   |  |  |
| CHG. 01   |  | ADDED CHARTS AND OTHER DATA  |  | PART NO.   |  |  |
| CHG. DESCRIPTION  |  | DATE   |  | 17650078   |  |  |
| APP'D BY  |  | DATE   |  | CHANGE   |  |  |
| CON   |  | 05/22/02   |  | 01   |  |  |