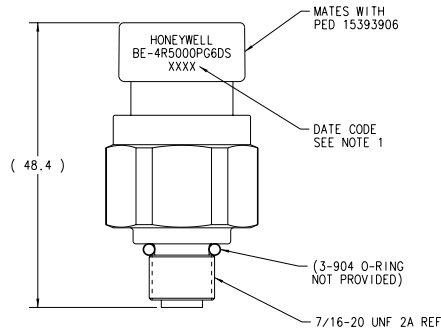
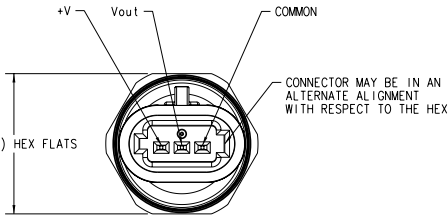


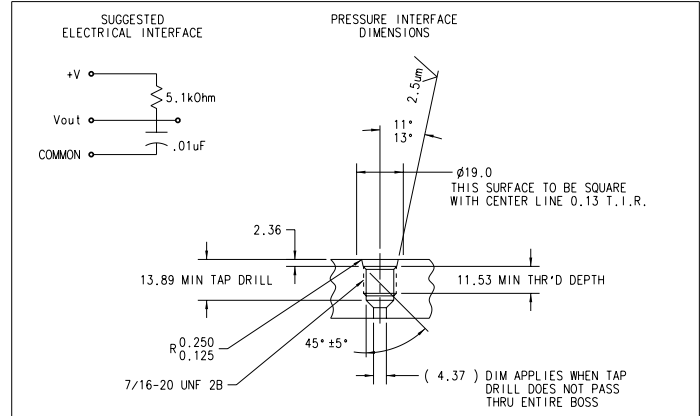
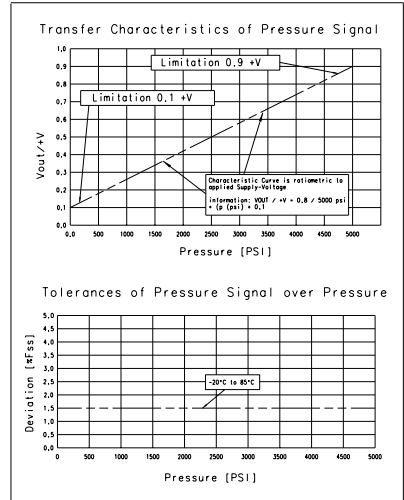
DIST. CODE: 15



Part	Material
Contact pin	CDA 210 (brass)
Surface Treatment	Tin
Connector body - black	PBT 30x GF
Sensor housing	303 SS
O-ring	EPDM
Pressure Port	17-4 Stainless Steel

Specifications:

Maximum Tightening Torque	20 Nm
Recommended Tightening Torque	15 Nm
Current Consumption	10 mA
Supply Voltage	4.75 to 5.25 VDC
Output Current	2 kohm min Load
Burst Pressure	15,000 PSI
Proof Pressure	10,000 PSI
Polarity/Overvoltage Protected to	14V
Temperature Range	-20°C to 85°C



- NOTES:**
- DATE CODE CONTAINS 4 DIGITS (XXXX)
THE FIRST DIGIT SIGNIFIES THE YEAR
THE LAST THREE DIGITS SIGNIFY THE DATE OF THE YEAR
 - VALIDATED TO TEST SPEC. 88842055

THIS DRAWING AND SPECIFICATIONS ARE THE PROPERTY OF HONEYWELL SENSING AND CONTROL AND SHALL NOT BE REPRODUCED, COPIED, OR DISCLOSED TO THE PUBLIC FOR MANUFACTURE OR SALE OF REPLICAS OF DEVICES WITHOUT WRITTEN PERMISSION OF HONEYWELL SENSING AND CONTROL.		DRAWING TO BE INTERPRETED USING ASME Y14.5M-1994 CHANGES TO BE DONE ON CAD SYSTEM ONLY		TOLERANCE		DRAWN		Honeywell Sensing and Control	
MAKE FROM		FINISH		1 PLACE		RY		17650086	
MATERIAL		FINISH		2 PLACE		04/15/02		1000 41102 14 Prod 04/15/02 17650086	
MATERIAL		FINISH		3 PLACE		05/20/02		PART NAME	
MATERIAL		FINISH		ANGULAR		E.T.N.		FINAL ASSEMBLY 5000 PSI	
MATERIAL		FINISH		SCALE		44107		SS PRESSURE SENSOR	
MATERIAL		FINISH		SCALE		05/20/02		PART NO.	
MATERIAL		FINISH		SCALE		2:1		17650086	
MATERIAL		FINISH		SCALE		2:1		CHANGE	
MATERIAL		FINISH		SCALE		2:1		01	