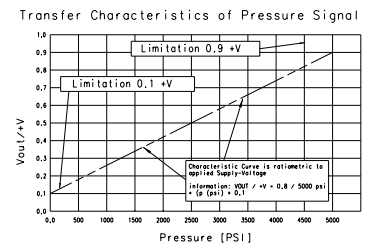
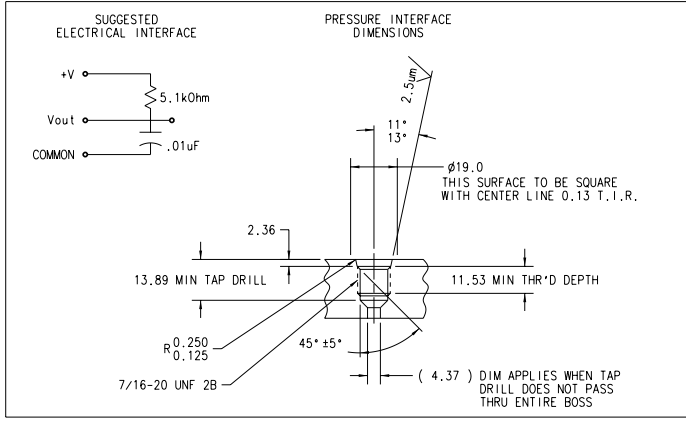
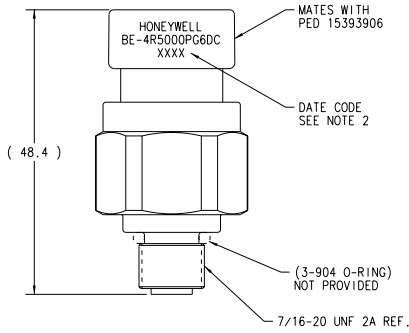
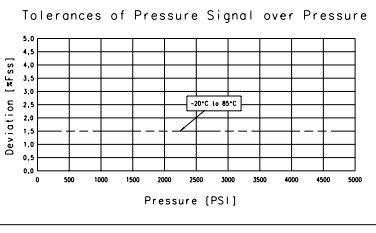


Part	Material
Contact pin	CDA 210 (brass)
Surface Treatment	Tin
Connector body - black	PBT 30% GF
Sensor housing	1215 Steel
Housing plating	Zinc
O-ring	EPDM
Pressure Port	17-4 Stainless Steel



Specifications:

Maximum Tightening Torque	20 Nm
Recommended Tightening Torque	15 Nm
Current Consumption	10 mA
Supply Voltage	4.75 to 5.25 VDC
Output Current	2 kOhm min Load
Burst Pressure	15,000 PSI
Proof Pressure	10,000 PSI
This Sensor is Reverse Polarity/Overvoltage Protected to	14V
Temperature Range	-20°C to 85°C



- NOTES:**
- DATE CODE CONTAINS 4 DIGITS (XXXX) THE FIRST DIGIT SIGNIFIES THE YEAR THE LAST THREE DIGITS SIGNIFY THE DATE OF THE YEAR
 - VALIDATED TO TEST SPEC. 88842055

THIS DRAWING AND SPECIFICATIONS ARE THE PROPERTY OF HONEYWELL SENSING AND CONTROL AND SHALL NOT BE REPRODUCED, COPIED, OR DISCLOSED TO THE PUBLIC FOR MANUFACTURE OR SALE OF REPLICAS OF DEVICES WITHOUT WRITTEN PERMISSION OF HONEYWELL SENSING AND CONTROL.		DRAWING TO BE INTERPRETED USING ASME Y14.5M-1994 CHANGES TO BE DONE ON CAD SYSTEM ONLY		TOLERANCE	DRAWN	
1 PLACE	MAKE FROM	1 PLACE	1 PLACE	±	EER	
2 PLACE	MATERIAL	2 PLACE	2 PLACE	±	04/04/02	
3 PLACE	FINISH	3 PLACE	3 PLACE	±	05/24/02	PART NO. 17650084
4 PLACE	CHG'D BY	4 PLACE	4 PLACE	±	05/24/02	
5 PLACE	CHG'D BY	5 PLACE	5 PLACE	±	05/24/02	CHANGE
6 PLACE	DATE	6 PLACE	6 PLACE	±	05/24/02	01
7 PLACE	APP'D BY	7 PLACE	7 PLACE	±	05/24/02	
8 PLACE		8 PLACE	8 PLACE	±	05/24/02	
9 PLACE		9 PLACE	9 PLACE	±	05/24/02	
10 PLACE		10 PLACE	10 PLACE	±	05/24/02	
11 PLACE		11 PLACE	11 PLACE	±	05/24/02	