

# Miniature Pressure Sensors

H-Grade  
Pressure Sensors



## Features

- 0 to 4" H<sub>2</sub>O to 0 to 100 PSI Pressure Ranges
- 0.5 % linearity...high accuracy version
- Temperature Compensated
- Calibrated Zero and Span

## Applications

- Medical Instrumentation
- Environmental Controls
- HVAC

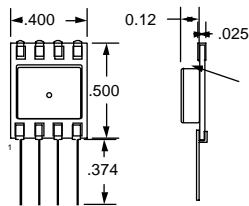
## General Description

The Miniature series pressure sensors are based upon a proprietary technology to reduce the size of the sensor and yet maintain a high level of performance. This model provides a calibrated millivolt output with superior output offset characteristics. Output offset errors due to change in temperature, stability to warm-up, stability to long time period, and position sensitivity are all significantly reduced when compared to conventional compensation methods. In addition the sensor utilizes a silicon, micromachined, stress concentration enhanced structure to provide a very linear output to measured pressure.

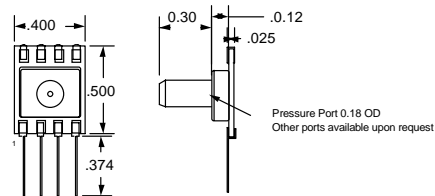
These calibrated and temperature compensated sensors give an accurate and stable output over a wide temperature range. This series is intended for use with non-corrosive, non-ionic working fluids such as air, dry gases and the like. The H-GRADE is a high accuracy version of the millivolt output pressure sensors.

The output of the device is ratiometric to the supply voltage and operation from any D.C. supply voltage.

## Physical Dimensions

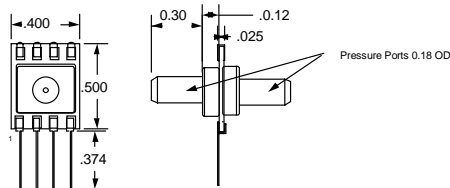


No Pressure Port



Single Pressure Port

**Marking:**  
 right dot: gold: H-Grade  
 left dot:  
 L04: white  
 L10: yellow  
 0.3: pink  
 1.0: green  
 05: blue  
 15: purple  
 30: orange  
 100: brown



Dual Pressure Port

All Sensors

012103

sensors

all

e www.allensors.com

f 408 225 2079

p 408 225 4314

a 6296 San Ignacio, Suite E & F, San Jose, CA 95119



## Pressure Sensor Characteristics Maximum Ratings

Supply Voltage VS	16 Vdc
Common-mode pressure	50 psig
Lead Temperature (soldering 2-4 sec.)	250°C

## Environmental Specifications

Temperature Ranges	
Compensated	0 to (50)70° C
Operating	-25 to 85° C
Storage	-40 to 125° C
Humidity Limits	0 to 95% RH (non condensing)

## Standard Pressure Ranges

No Pressure Port		Single Pressure Port		Dual Pressure Port	Proof Pressure
Part Number	Operating Pressure	Part Number	Part Number	Part Number	
4 INCH-G-HGRADE-MINI	0 - 4 "H2O	4 INCH-GF-HGRADE-MINI	4 INCH-D-HGRADE-MINI		3 PSI
0.3 PSI-G-HGRADE-MINI	0 - 0.3 PSI	0.3 PSI-GF-HGRADE-MINI	0.3 PSI-D-HGRADE-MINI		3 PSI
10 INCH-G-HGRADE-MINI	0 - 10 "H2O	10 INCH-GF-HGRADE-MINI	10 INCH-D-HGRADE-MINI		5 PSI
1 PSI-G-HGRADE-MINI	0 - 1 PSI	1 PSI-GF-HGRADE-MINI	1 PSI-D-HGRADE-MINI		10 PSI
5 PSI-G-HGRADE-MINI	0 - 5 PSI	5 PSI-GF-HGRADE-MINI	5 PSI-D-HGRADE-MINI		20 PSI
15 PSI-A-HGRADE-MINI	0 - 15 PSIA	15 PSI-AF-HGRADE-MINI			60 PSI
15 PSI-G-HGRADE-MINI	0-15 PSIG	15 PSI-GF-HGRADE-MINI	15 PSI-D-HGRADE-MINI		60 PSI
30 PSI-G-HGRADE-MINI	0-30 PSIG	30 PSI-GF-HGRADE-MINI	30 PSI-D-HGRADE-MINI		60 PSI
100 PSI-G-HGRADE-MINI	0-100 PSIG	100-GF-HGRADE-MINI			150 PSI

## Performance Characteristics for 4 INCH-G-HGRADE-MINI

Parameter, note 1	Minimum	Nominal	Maximum	Units
Operating Range, differential pressure		4.0		"H2O
Output Span, note 5	24	25	26	mV
Offset Voltage @ zero differential pressure			±0.5	mV
Offset Temperature Shift (0°C-50°C), note 2			±0.5	mV
Linearity, hysteresis error, note 4		0.25	0.5	%fs
Span Shift (0°C-50°C), note 2			±1	%fs

## Performance Characteristics for 10 INCH-G-HGRADE-MINI

Parameter, note 1	Minimum	Nominal	Maximum	Units
Operating Range, differential pressure		10.0		"H2O
Output Span, note 5	19	20	21	mV
Offset Voltage @ zero differential pressure			±0.5	mV
Offset Temperature Shift (0°C-70°C), note 2			±0.5	mV
Linearity, hysteresis error, note 4		0.25	0.5	%fs
Span Shift (0°C-70°C), note 2			±1	%fs

Miniature H-grade Pressure Sensors

## Performance Characteristics for 0.3 PSI-G-HGRADE-MINI

Parameter, note 1	Minimum	Nominal	Maximum	Units
Operating Range, differential pressure		0.3		PSI
Output Span, note 5	19	20	21	mV
Offset Voltage @ zero differential pressure			±0.5	mV
Offset Temperature Shift (0°C-70°C), note 2			±0.5	mV
Linearity, hysteresis error, note 4		0.25	0.5	%fs
Span Shift (0°C-70°C), note 2			±1	%fs

## Performance Characteristics for 1 PSI-G-HGRADE-MINI

Parameter, note 1	Minimum	Nominal	Maximum	Units
Operating Range, differential pressure		1.0		PSI
Output Span, note 5	17.82	18.00	18.18	mV
Offset Voltage @ zero differential pressure			±0.5	mV
Offset Temperature Shift (0°C-70°C), note 2			±0.5	mV
Linearity, hysteresis error, note 4		0.25	0.5	%fs
Span Shift (0°C-70°C), note 2			±1	%fs

## Performance Characteristics for 5 PSI-G-HGRADE-MINI

Parameter, note 1	Minimum	Nominal	Maximum	Units
Operating Range, differential pressure		5.0		PSI
Output Span, note 5	59.4	60.0	60.6	mV
Offset Voltage @ zero differential pressure			±0.5	mV
Offset Temperature Shift (0°C-70°C), note 2			±0.5	mV
Linearity, hysteresis error, note 4		0.25	0.5	%fs
Span Shift (0°C-70°C), note 2			±1	%fs

## Performance Characteristics for 15 PSI-G-HGRADE-MINI

Parameter, note 1	Minimum	Nominal	Maximum	Units
Operating Range, gage pressure		15.0		PSIG
Output Span, note 5	89.1	90.0	90.9	mV
Offset Voltage @ zero gage pressure			±0.5	mV
Offset Temperature Shift (0°C-70°C), note 2			±0.5	mV
Linearity, hysteresis error, note 4		0.25	0.5	%fs
Span Shift (0°C-70°C), note 2			±1	%fs



## Performance Characteristics for 15 PSI-A-HGRADE-MINI

Parameter, note 1	Minimum	Nominal	Maximum	Units
Operating Range, absolute pressure		15.0		PSIA
Output Span, note 5	89.1	90.0	90.9	mV
Offset Voltage @ zero differential pressure			±0.5	mV
Offset Temperature Shift (0°C-70°C), note 2			±0.5	mV
Linearity, hysteresis error, note 4		0.25	0.5	%fs
Span Shift (0°C-70°C), note 2			±1	%fs

## Performance Characteristics for 30 PSI-G-HGRADE-MINI

Parameter, note 1	Minimum	Nominal	Maximum	Units
Operating Range, gage pressure		30.0		PSIG
Output Span, note 5	89.1	90.0	90.9	mV
Offset Voltage @ zero gage pressure			±0.5	mV
Offset Temperature Shift (0°C-70°C), note 2			±0.5	mV
Linearity, hysteresis error, note 4		0.25	0.5	%fs
Span Shift (0°C-70°C), note 2			±1	%fs

## Performance Characteristics for 100 PSI-G-HGRADE-MINI

Parameter, note 1	Minimum	Nominal	Maximum	Units
Operating Range, gage pressure		100.0		PSIG
Output Span, note 5	99.0	100.0	101.0	mV
Offset Voltage @ zero gage pressure			±0.5	mV
Offset Temperature Shift (0°C-70°C), note 2			±0.5	mV
Linearity, hysteresis error, note 4		0.25	0.5	%fs
Span Shift (0°C-70°C), note 2			±1	%fs

### Specification Notes

NOTE 1: ALL PARAMETERS ARE MEASURED AT 12.0 VOLT EXCITATION, FOR THE NOMINAL FULL SCALE PRESSURE AND ROOM TEMPERATURE UNLESS OTHERWISE SPECIFIED. PRESSURE MEASUREMENTS ARE WITH POSITIVE PRESSURE APPLIED TO PORT B.

NOTE 2: SHIFT IS RELATIVE TO 25°C.

NOTE 3: SHIFT IS WITHIN THE FIRST HOUR OF EXCITATION APPLIED TO THE DEVICE.

NOTE 4: MEASURED AT ONE-HALF FULL SCALE RATED PRESSURE USING BEST STRAIGHT LINE CURVE FIT.

NOTE 5: THE VOLTAGE ADDED TO THE OFFSET VOLTAGE AT FULL SCALE PRESSURE.

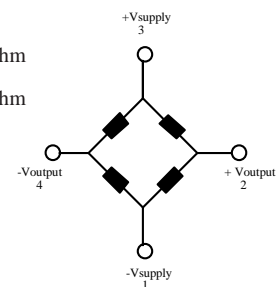
Input Resistance

5.0 k ohm

Output Resistance

3.0 k ohm

### Equivalent Circuit



All Sensors reserves the right to make changes to any products herein. All Sensors does not assume any liability arising out of the application or use of any product or circuit described herein, neither does it convey any license under its patent rights nor the rights of others.

Miniature H-grade Pressure Sensors