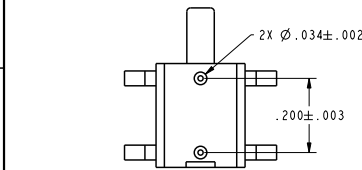
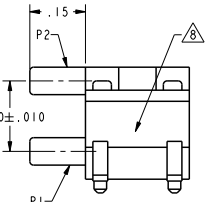
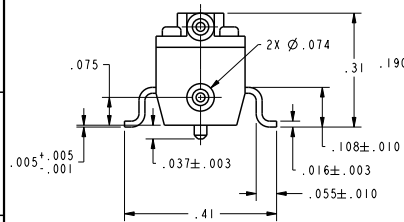
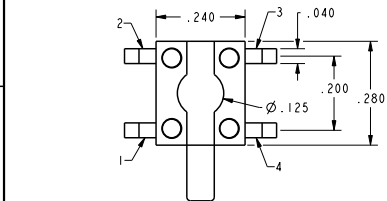


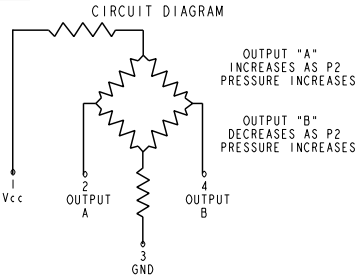
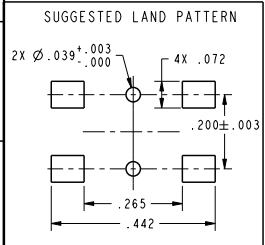
REV	DOCUMENT	CHANGED BY	CHECK
10	0036788	SSK 21 JAN 08	BLR



CATALOG LISTING	BRANDING CODE
26PC01SMT	601F
26PC05SMT	605F
26PC15SMT	615F
(D)	6100FG
26PC01SMT-SAMPLES	601F
26PC05SMT-SAMPLES	605F
26PC15SMT-SAMPLES	615F

- NOTES
- 1 - SPAN IS THE ALGEBRAIC DIFFERENCE BETWEEN OUTPUT AT MAXIMUM RATED OPERATING PRESSURE AND OUTPUT AT 0 PSI
 - 2 - TEMPERATURE ERROR IS CALCULATED WITH RESPECT TO 25°C
 - 3 - INPUT MEDIA LIMITED ONLY TO THOSE MATERIALS THAT WILL NOT ATTACK SILICON, THE HOUSING MATERIAL OR SEAL MATERIAL
 - 4 - SENSOR IS OPERATIONAL OVER VACUUM PRESSURE RANGE
 - 5 - RATIOMETRIC TO SUPPLY VOLTAGE
 - 6 - RECOMMENDED TUBING SIZE: .062 I.D. X .031 WALL THICKNESS
 - 7 - FOR COMMON MODE NULL OFFSET INFORMATION, SEE APPLICATION NOTES
 - 8 - LASER MARK DATE CODE AND CATALOG LISTING THIS AREA

GENERAL OPERATING CHARACTERISTICS										
(ELECTRICAL PERFORMANCE AT 10.00±0.01 VDC EXCITATION, 25°C)										
OPERATING PRESSURE RANGE (PSIG)	0 - 1			0 - 5			0 - 15			
CATALOG LISTING	26PC01SMT			26PC05SMT			26PC15SMT			
SPAN (P2>P1) Δ	MIN	NOM	MAX	MIN	NOM	MAX	MIN	NOM	MAX	UNITS
SPAN (P2>P1) Δ	14.7	16.7	18.7	47	50	53	96	100	104	mV
NULL OFFSET	-2.0	0	+2.0	-2.0	0	+2.0	-2.0	0	+2.0	mV
LINEARITY (BFSL, P2>P1)	MIN	TYP	MAX	MIN	TYP	MAX	MIN	TYP	MAX	UNITS
NULL SHIFT (0 TO 25°C, 25 TO 50°C) Δ		±0.50	+1.75		±0.50	+1.5		±0.50	+1.0	%SPAN
SPAN SHIFT (0 TO 25°C, 25 TO 50°C) P2>P1 Δ		±1.0			±1.0			±1.0		mV
SPAN SHIFT (0 TO 25°C, 25 TO 50°C) P2>P1 Δ		±1.5	±4.5		±1.0	±1.7		±.75	±1.5	%SPAN
REPEATABILITY AND HYSTERESIS		±0.2			±0.2			±0.2		%SPAN
OVERPRESSURE (P2>P1 ; P1>P2)			20			20			45	PSI
COMMON MODE PRESSURE Δ										
ALL PRESSURE RANGES	MIN	TYP	MAX	UNITS						
EXCITATION VOLTAGE		10	16	VDC						
INPUT RESISTANCE	5.5K	7.5K	11.5K	OHMS						
OUTPUT RESISTANCE	1.5K	2.5K	3.0K	OHMS						
RESPONSE TIME			1.0	mS						
TEMPERATURE RANGES										
STORAGE	-55°C TO +100°C (-67°F TO +212°F)									
OPERATE	-40°C TO +85°C (-40°F TO +185°F)									
COMPENSATED	0 TO +50°C (+32°F TO +122°F)									



UNLESS OTHERWISE SPECIFIED TOLERANCES ARE:	FRAMES	CHUCK	WJC	10JUL01
NO PLACE	X	±.040	±1	10JUL01
ONE PLACE	.X	±.030	±0.4	
TWO PLACE	.XX	±.015	±0.15	
THREE PLACE	.XXX	±.005	±	
ANGLES		±	±	
RAW MATERIAL-COMMERCIAL STANDARD				
THIRD ANGLE PROJECTION				
CHECK	SAV			
THIS DRAWING COVERS A PROPRIETARY ITEM AND IS THE PROPERTY OF HONEYWELL. THIS DRAWING IS NOT TO BE COPIED OR USED WITHOUT THE PERMISSION OF HONEYWELL.				
DIMENSIONS ARE TO BE MET BEFORE PROTECTIVE COATINGS ARE APPLIED				
3D PTC	ASME Y14.5M-1994			

Honeywell			
BRIDGE PRESSURE SENSOR			
TITLE	SIZE	DWG TYPE	DRAWING NAME
	C	I	26PC SMT SERIES CHART 1
REV	10	SCALE	5:1
		WEIGHT	5 GRAMS
		SHEET	1 OF 1