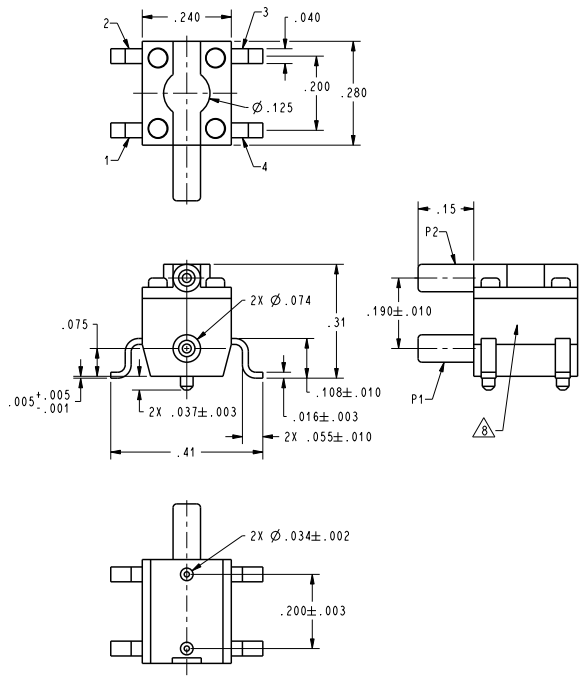


REV	DOCUMENT	CHANGED BY	CHECK
6	0001387	TRF	18SEP03 SAV

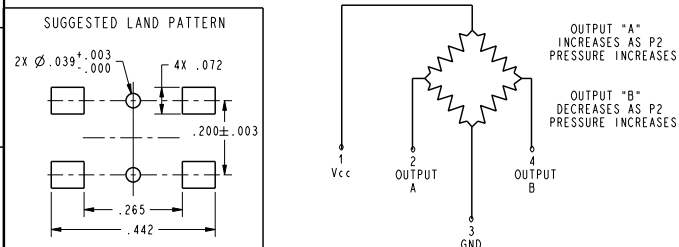


CATALOG LISTING	BRANDING CODE
24PC01SMT	401F
24PC05SMT	405F
24PC15SMT	415F
24PC01SMT-SAMPLES	401F
24PC05SMT-SAMPLES	405F
24PC15SMT-SAMPLES	415F

GENERAL OPERATING CHARACTERISTICS											
(ELECTRICAL PERFORMANCE AT 10.00±0.01 VDC EXCITATION, 25°C)											
OPERATING PRESSURE RANGE (PSIG)	0 - 1 (A)			0 - 5 (B)			0 - 15 (C)				
	MIN	NOM	MAX	MIN	NOM	MAX	MIN	NOM	MAX	UNITS	
CATALOG LISTING	24PC01SMT			24PC05SMT			24PC15SMT				
SPAN (P2>P1) $\Delta$	25	45	65	80	115	150	160	225	290	mV	
NULL OFFSET	-30	0	+30	-30	0	+30	-30	0	+30	mV	
	MIN	TYP	MAX	MIN	TYP	MAX	MIN	TYP	MAX	UNITS	
LINEARITY (BFSL, P2>P1)	±0.15			±0.4			±0.1			±0.2	
NULL SHIFT (0 TO 25°C, 25 TO 50°C) $\Delta$	±1.0			±1.0			±1.0			±1.0	
SPAN SHIFT (0 TO 25°C, 25 TO 50°C) P2>P1 $\Delta$	±5.0			±5.0			±5.0			±5.0	
MECHANICAL HYSTERESIS	±0.2			±0.1			±0.2			±0.2	
OVERPRESSURE (P2>P1 ; P1>P2)	20			20			45			PSI	
ALL PRESSURE RANGES	MIN	NOM	MAX	UNITS							
EXCITATION VOLTAGE	10			12							
INPUT RESISTANCE	4.0K	5.0K	6.0K	OHMS							
OUTPUT RESISTANCE	4.0K	5.0K	6.0K	OHMS							
RESPONSE TIME	1.0			mS							
TEMPERATURE RANGES											
STORAGE	-55°C TO +100°C (-67°F TO +212°F)										
OPERATE	-40°C TO +85°C (-40°F TO +185°F)										

- NOTES
- $\Delta$  SPAN IS THE ALGEBRAIC DIFFERENCE BETWEEN OUTPUT AT MAXIMUM RATED OPERATING PRESSURE AND OUTPUT AT 0 PSI
  - $\Delta$  TEMPERATURE ERROR IS CALCULATED WITH RESPECT TO 25°C
  - 3 - INPUT MEDIA LIMITED ONLY TO THOSE MATERIALS THAT WILL NOT ATTACK SILICON, THE HOUSING MATERIAL OR SEAL MATERIAL
  - 4 - SENSOR IS OPERATIONAL OVER VACUUM PRESSURE RANGE
  - 5 - RATIO METRIC TO SUPPLY VOLTAGE
  - 6 - RECOMMENDED TUBING SIZE: .062 I.D. X .031 WALL THICKNESS
  - 7 - FOR COMMON MODE NULL OFFSET INFORMATION, SEE APPLICATION NOTES
  - $\Delta$  LASER MARK DATE CODE AND BRANDING CODE THIS AREA

CIRCUIT DIAGRAM



UNLESS OTHERWISE SPECIFIED TOLERANCES ARE: <input checked="" type="checkbox"/> MILITARY <input type="checkbox"/> JEDEC	DRAWN	GLH	31 JUL 01	<b>Honeywell</b>
NO PLACE .X ±.040 ±1	CHECK	SAV	31 JUL 01	
ONE PLACE .X ±.030 ±0.4	THIS DRAWING COVERS A PROPRIETARY ITEM AND IS THE PROPERTY OF HONEYWELL. THIS DRAWING IS NOT TO BE COPIED OR USED WITHOUT THE PERMISSION OF HONEYWELL.			TITLE
TWO PLACE .XX ±.015 ±0.15	THIRD ANGLE PROJECTION			BRIDGE PRESSURE SENSOR -
THREE PLACE .XXX ±.005 ±	DIMENSIONS ARE TO BE MET BEFORE PROTECTIVE COATINGS ARE APPLIED			SIZE DWG TYPE DRAWING NAME REV
ANGLES ±	3D PTC ASME Y14.5M-1994			C I 24PC SMT SERIES CHART 1 6
RAW MATERIAL-COMMERCIAL STANDARD	SCALE 5:1			WEIGHT, 5 GRAMS SHEET 1 OF 1