

ABSOLUTE MAXIMUM RATINGS

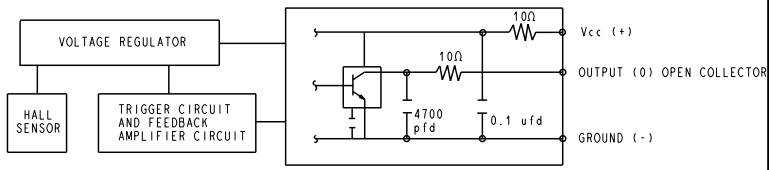
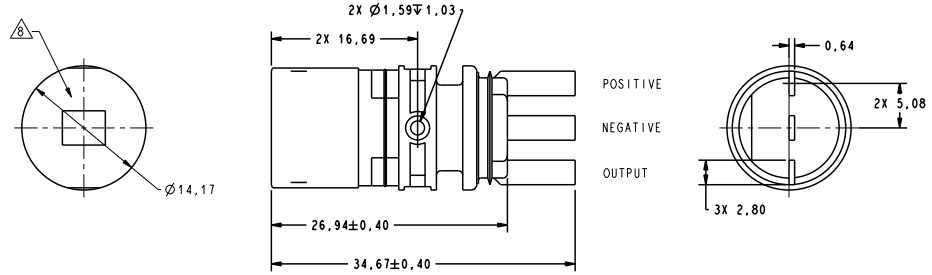
SUPPLY VOLTAGE	+30V CONTINUOUS
VOLTAGE EXTERNALLY APPLIED TO OUTPUT	-0.5 TO +30V (OUTPUT HIGH)
OUTPUT CURRENT	40 mA SINKING
TEMP	150°C

RECOMMENDED OPERATING CONDITIONS

PARAMETER	CONDITIONS	MIN	TYP	MAX	UNITS
OPERATING TEMPERATURE		-40		+150	°C
SUPPLY VOLTAGE		4.5		24	VDC
SUPPLY CURRENT			10	20	mA
OUTPUT VOLTAGE	LOW OUTPUT		.5		VDC
OUTPUT CURRENT	LOW OUTPUT		20		mA
OUTPUT LEAKAGE CURRENT	HIGH OUTPUT		10		µA
RISE TIME	10% TO 90%		15		µS
FALL TIME	90% TO 10%		1.0		µS

OPERATING SPECIFICATIONS

	LIMIT	CONDITIONS	UNITS
OPERATE	3.0° ± 1.25°	AIR GAP 0.38 - 2.28 mm	mm
RELEASE	3.0° ± 2.50°	V SUPPLY 4.5-24 V TEMP -40 TO 150 °C RPM 10 TO 3600	DEG



BLOCK DIAGRAM SHOWING CURRENT SINKING OUTPUT

- NOTES**
- TARGET SHOULD BE MADE OF C-1018 STEEL OR ENGINEERING APPROVED EQUIVALENT, ANNEAL AFTER MACHINING OR FORMING
 - MAX LIMITS THAT SWITCH WILL WITHSTAND WITHOUT DAMAGE
 - OPERATING SPECIFICATION IS BASED ON TARGET SHOWN IN FIGURE 1 AND WILL VARY WITH TARGET GEOMETRY
 - OPERATE (DEGREES) IS THE ANGULAR DISTANCE FROM THE LEADING EDGE OF THE TOOTH TO THE CENTERLINE OF THE SENSOR
 - RELEASE (DEGREES) IS THE ANGULAR DISTANCE FROM THE TRAILING EDGE OF THE TOOTH TO THE CENTERLINE OF THE SENSOR
 - ELECTRICAL CHARACTERISTICS ARE GUARANTEED WITH MAX EXTERNAL LOAD CAPACITANCE < 550 pfd
 - AIR GAP IS THE DISTANCE FROM SENSOR FACE TO TARGET
 - CATALOG LISTING, DATE CODE AND SERIAL NUMBER LOCATED IN THIS AREA
 - RELIABILITY AND EMI PERFORMANCE IS BASED ON TS 060 234
 - FOR VALUE ADDED ASSEMBLY CONSIDERATIONS REFERENCE APPLICATION NOTE PK-80139



THIRD ANGLE PROJECTION

SCALE 3:1

DO NOT SCALE PRINT

UNLESS OTHERWISE SPECIFIED TOLERANCES ARE

NO PLACE (0) ± 1 MM

ONE PLACE (0.0) ± 0.4 MM

TWO PLACE (0.00) ± 0.15 MM

ANGLES ±

WEIGHT

THIS DRAWING COVERS A PROPRIETARY ITEM AND IS THE PROPERTY OF MICRO SWITCH, A DIVISION OF HONEYWELL. THIS DRAWING IS NOT TO BE COPIED OR USED WITHOUT THE APPROVAL OF MICRO SWITCH.

MICRO SWITCH
a Honeywell Division

GEARTOOTH SENSOR

CATALOG LISTING
IGP7001

ANSI Y14.5M-1982 APPLIES

IGP7001
 PAGE 1 OF 1
 REVISION 111028-GT
 REVISED BY DR-4881
 DATE 12/24/02
 P.T.C./C.A.D.
 REG. 20MAR95
 JAF
 2002246
 12/24/02