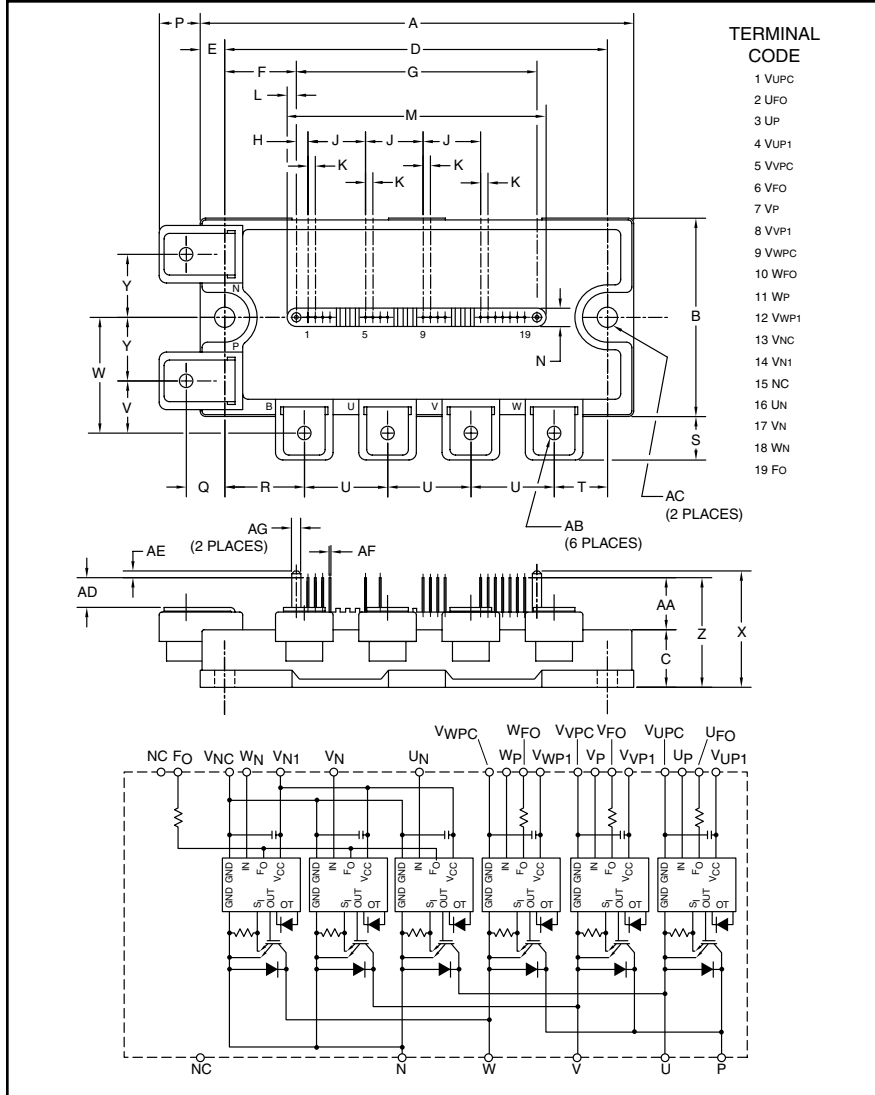


### Intellimod™ L-Series Three Phase IGBT Inverter 75 Amperes/600 Volts



**TERMINAL CODE**

- 1 VUPC
- 2 VFO
- 3 UP
- 4 VUP1
- 5 VVPC
- 6 VFO
- 7 VP
- 8 VVP1
- 9 WVPC
- 10 WFO
- 11 WP
- 12 VWP1
- 13 VNC
- 14 VN1
- 15 NC
- 16 UN
- 17 VN
- 18 WN
- 19 Fo



**Description:**  
Powerex Intellimod™ Intelligent Power Modules are isolated base modules designed for power switching applications operating at frequencies to 20kHz. Built-in control circuits provide optimum gate drive and protection for the IGBT and free-wheel diode power devices.

- Features:**
- Complete Output Power Circuit
  - Gate Drive Circuit
  - Protection Logic
    - Short Circuit
    - Over Temperature
    - Using On-chip Temperature Sensing
    - Under Voltage
  - Low Loss Using 5th Generation IGBT Chip

- Applications:**
- Inverters
  - UPS
  - Motion/Servo Control
  - Power Supplies

**Ordering Information:**  
Example: Select the complete part number from the table below -i.e. PM75CLA060 is a 600V, 75 Ampere Intellimod™ Intelligent Power Module.

Outline Drawing and Circuit Diagram

Dimensions	Inches	Millimeters
A	4.72	120.0
B	2.17	55.0
C	0.63	16.0
D	4.17	106.0
E	0.28	7.0
F	0.78	19.75
G	2.62	66.5
H	0.13	3.25
J	0.63	16.0
K	0.08	2.0
L	0.10	2.5
M	2.81	71.5
N	0.20	5.0
P	0.43	11.0
Q	0.42	10.75
R	0.87	22.0

Dimensions	Inches	Millimeters
S	0.46	11.75
T	0.59	15.0
U	0.91	23.0
V	0.57	14.5
W	1.26	32.0
X	1.22	31.0
Y	0.69	17.5
Z	1.14	29.0
AA	0.51	13.0
AB	M5 Metric	M5
AC	0.22 Dia.	Dia. 5.5
AD	0.28	7.0
AE	0.08	2.0
AF	0.02 Sq.	Sq. 0.5
AG	0.10 Dia.	Dia. 2.5

Type	Current Rating Amperes	V <sub>CES</sub> Volts (x 10)
PM	75	60

**PM75CLA060**  
**Intellimod™ L-Series**  
**Three Phase IGBT Inverter**  
 75 Amperes/600 Volts

## Absolute Maximum Ratings, $T_j = 25^\circ\text{C}$ unless otherwise specified

Characteristics	Symbol	PM75CLA060	Units
Power Device Junction Temperature	$T_j$	-20 to 150	$^\circ\text{C}$
Storage Temperature	$T_{\text{stg}}$	-40 to 125	$^\circ\text{C}$
Mounting Torque, M5 Mounting Screws	—	31	in-lb
Mounting Torque, M5 Main Terminal Screws	—	31	in-lb
Module Weight (Typical)	—	380	Grams
Supply Voltage, Surge (Applied between P - N)	$V_{\text{CC(surge)}}$	550	Volts
Self-protection Supply Voltage Limit (Short Circuit protection Capability)*	$V_{\text{CC(prot.)}}$	400	Volts
Isolation Voltage, AC 1 minute, 60Hz Sinusoidal	$V_{\text{ISO}}$	2500	Volts

\*VD = 13.5 ~ 16.5V, Inverter Part,  $T_j = 125^\circ\text{C}$

## IGBT Inverter Sector

Collector-Emitter Voltage ( $V_D = 15\text{V}$ , $V_{\text{CIN}} = 15\text{V}$ )	$V_{\text{CES}}$	600	Volts
Collector Current ( $T_C = 25^\circ\text{C}$ )	$\pm I_C$	75	Amperes
Peak Collector Current ( $T_C = 25^\circ\text{C}$ )	$\pm I_{\text{CP}}$	150	Amperes
Collector Dissipation ( $T_C = 25^\circ\text{C}$ )	$P_C$	300	Watts

## Control Sector

Supply Voltage (Applied between $V_{\text{UP1}}-V_{\text{U1PC}}$ , $V_{\text{VP1}}-V_{\text{V1PC}}$ , $V_{\text{WP1}}-V_{\text{W1PC}}$ , $V_{\text{N1}}-V_{\text{N1C}}$ )	$V_D$	20	Volts
Input Voltage (Applied between $U_P-V_{\text{U1PC}}$ , $V_P-V_{\text{V1PC}}$ , $W_P-V_{\text{W1PC}}$ , $U_N-V_N-V_{\text{N1C}}$ )	$V_{\text{CIN}}$	20	Volts
Fault Output Supply Voltage (Applied between $U_{\text{FO}}-V_{\text{U1PC}}$ , $V_{\text{FO}}-V_{\text{V1PC}}$ , $W_{\text{FO}}-V_{\text{W1PC}}$ , $F_O-V_{\text{N1C}}$ )	$V_{\text{FO}}$	20	Volts
Fault Output Current ( $U_{\text{FO}}$ , $V_{\text{FO}}$ , $W_{\text{FO}}$ , $F_O$ Terminals)	$I_{\text{FO}}$	20	mA

## Electrical and Mechanical Characteristics, $T_j = 25^\circ\text{C}$ unless otherwise specified

Characteristics	Symbol	Test Conditions	Min.	Typ.	Max.	Units
Collector-Emitter Cutoff Current	$I_{\text{CES}}$	$V_{\text{CE}} = V_{\text{CES}}$ , $V_D = 15\text{V}$ , $T_j = 25^\circ\text{C}$	—	—	1.0	mA
		$V_{\text{CE}} = V_{\text{CES}}$ , $V_D = 15\text{V}$ , $T_j = 125^\circ\text{C}$	—	—	10	mA
Diode Forward Voltage	$V_{\text{EC}}$	$-I_C = 75\text{A}$ , $V_{\text{CIN}} = 15\text{V}$ , $V_D = 15\text{V}$	—	2.2	3.3	Volts
Collector-Emitter Saturation Voltage	$V_{\text{CE(sat)}}$	$V_D = 15\text{V}$ , $V_{\text{CIN}} = 0\text{V}$ , $I_C = 75\text{A}$ , $T_j = 25^\circ\text{C}$	—	1.6	2.1	Volts
		$V_D = 15\text{V}$ , $V_{\text{CIN}} = 0\text{V}$ , $I_C = 75\text{A}$ , $T_j = 125^\circ\text{C}$	—	1.5	2.0	Volts
Inductive Load Switching Times	$t_{\text{on}}$	$V_D = 15\text{V}$ , $V_{\text{CIN}} = 0 \Leftrightarrow 15\text{V}$ $V_{\text{CC}} = 300\text{V}$ , $I_C = 75\text{A}$ $T_j = 125^\circ\text{C}$	0.5	1.0	2.4	$\mu\text{s}$
	$t_{\text{rr}}$		—	0.2	0.4	$\mu\text{s}$
	$t_{\text{C(on)}}$		—	0.4	1.0	$\mu\text{s}$
	$t_{\text{off}}$		—	1.2	2.5	$\mu\text{s}$
	$t_{\text{C(off)}}$		—	0.5	1.0	$\mu\text{s}$

**PM75CLA060**  
**Intellimod™ L-Series**  
**Three Phase IGBT Inverter**  
 75 Amperes/600 Volts

## Electrical and Mechanical Characteristics, $T_j = 25^\circ\text{C}$ unless otherwise specified

Characteristics	Symbol	Test Conditions	Min.	Typ.	Max.	Units
<b>Control Sector</b>						
Short Circuit Trip Level	SC	$-20^\circ\text{C} \leq T_j \leq 125^\circ\text{C}$ , $V_D = 15\text{V}$	150	241	—	Amperes
Short Circuit Current Delay Time	$t_{\text{off(SC)}}$	$V_D = 15\text{V}$	—	0.2	—	$\mu\text{s}$
Over Temperature Protection (Detect $T_j$ of IGBT Chip)	OT	Trip Level	135	145	155	$^\circ\text{C}$
	$\text{OT}_R$	Reset Level	—	125	—	$^\circ\text{C}$
Supply Circuit Under-voltage Protection ( $-20 \leq T_j \leq 125^\circ\text{C}$ )	UV	Trip Level	11.5	12.0	12.5	Volts
	$\text{UV}_R$	Reset Level	—	12.5	—	Volts
Circuit Current	$I_D$	$V_D = 15\text{V}$ , $V_{\text{CIN}} = 15\text{V}$ , $V_{N1}-V_{\text{NC}}$	—	15	25	mA
		$V_D = 15\text{V}$ , $V_{\text{CIN}} = 15\text{V}$ , $V_{\text{XP1}}-V_{\text{XPC}}$	—	5	10	mA
Input ON Threshold Voltage	$V_{\text{th(on)}}$	Applied between $U_P-V_{\text{UPC}}$ ,	1.2	1.5	1.8	Volts
Input OFF Threshold Voltage	$V_{\text{th(off)}}$	$V_P-V_{\text{VPC}}$ , $W_P-V_{\text{WPC}}$ , $U_N-V_N$ , $W_N-V_{\text{NC}}$	1.7	2.0	2.3	Volts
Fault Output Current*	$I_{\text{FO(H)}}$	$V_D = 15\text{V}$ , $V_{\text{CIN}} = 15\text{V}$	—	—	0.01	mA
	$I_{\text{FO(L)}}$	$V_D = 15\text{V}$ , $V_{\text{CIN}} = 15\text{V}$	—	10	15	mA
Fault Output Pulse Width*	$t_{\text{FO}}$	$V_D = 15\text{V}$	1.0	1.8	—	ms

\*Fault output is given only when the internal SC, OT and UV protections schemes of either upper or lower device operate to protect it.

## Thermal Characteristics

Characteristic	Symbol	Condition	Min.	Typ.	Max.	Units
Junction to Case Thermal Resistance	$R_{\text{th(j-c)Q}}$	IGBT (Per 1/6 Module) (Note 1)	—	—	0.42	$^\circ\text{C/Watt}$
	$R_{\text{th(j-c)D}}$	FWDi (Per 1/6 Module) (Note 1)	—	—	0.69	$^\circ\text{C/Watt}$
	$R_{\text{th(j-c)Q}}$	IGBT (Per 1/6 Module) (Note 2)	—	—	0.32	$^\circ\text{C/Watt}$
	$R_{\text{th(j-c)D}}$	FWDi (Per 1/6 Module) (Note 2)	—	—	0.53	$^\circ\text{C/Watt}$
Contact Thermal Resistance	$R_{\text{th(c-f)}}$	Case to Fin Per Module, Thermal Grease Applied (Note 1)	—	—	0.038	$^\circ\text{C/Watt}$

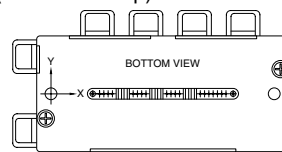
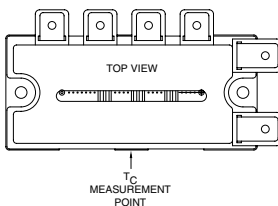
## Recommended Conditions for Use

Characteristic	Symbol	Condition	Value	Units
Supply Voltage	$V_{\text{CC}}$	Applied across P-N Terminals	$\leq 400$	Volts
Control Supply Voltage**	$V_D$	Applied between $V_{\text{UP1}}-V_{\text{UPC}}$ , $V_{\text{VP1}}-V_{\text{VPC}}$ , $V_{\text{WP1}}-V_{\text{WPC}}$ , $V_{N1}-V_{\text{NC}}$	$15.0 \pm 1.5$	Volts
Input ON Voltage	$V_{\text{CIN(on)}}$	Applied between $U_P-V_{\text{UPC}}$ ,	$\leq 0.8$	Volts
Input OFF Voltage	$V_{\text{CIN(off)}}$	$V_P-V_{\text{VPC}}$ , $W_P-V_{\text{WPC}}$ , $U_N-V_N$ , $W_N-V_{\text{NC}}$	$\geq 9.0$	Volts
PWM Input Frequency	$f_{\text{PWM}}$	—	$\leq 20$	kHz
Arm Shoot-through Blocking Time	$t_{\text{DEAD}}$	Input Signal	$\geq 2.0$	$\mu\text{s}$

\*\* With ripple satisfying the following conditions:  $dv/dt$  swing  $\leq \pm 5\text{V}/\mu\text{s}$ , Variation  $\leq 2\text{V}$  peak to peak.

Note 1:  $T_C$  (Base Plate) Measurement Point

Note 2:  $T_C$  (Under the Chip) Measurement Point



Arm Axis	UP		VP		WP		UN		VN		WN	
	IGBT	FWDi	IGBT	FWDi	IGBT	FWDi	IGBT	FWDi	IGBT	FWDi	IGBT	FWDi
X	28.7	28.7	65.2	65.2	85.3	85.3	38.0	38.0	55.4	55.4	75.5	75.5
Y	-6.6	0.85	-6.6	2.5	-6.6	2.5	4.6	-4.5	4.6	-4.5	4.6	-4.5

**PM75CLA060**  
**Intellimod™ L-Series**  
**Three Phase IGBT Inverter**  
**75 Amperes/600 Volts**

