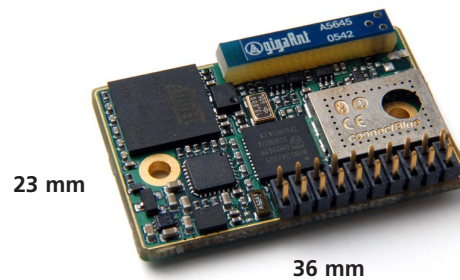


INDUSTRIAL BLUETOOTH™



Product Brief OEMSPA333

The OEM SERIAL PORT ADAPTER™ 333 is a complete Bluetooth module specially designed to make migration from prior connectBlue Bluetooth generations an easy task. The module supports full Wireless Multipoint and Wireless Multidrop™ with up to 7 slaves.

Key Features

- Electrical and mechanical compatible with both OEMSPA13/33
- Long Range module (full 20 dBm)
- Wireless Multidrop™ and Multipoint with up to 7 slaves
- RS232 and UART logic-level support
- Designed for high performance/throughput
- Configurable for short latency/delay
- AT Command support
- ECI Command support
- Wireless LAN co-existence support
- Configuration over Bluetooth
- Bluetooth Qualified as Product (Bluetooth version 2.0)
- Radio Type Approved for Europe, US and Canada
- Compliant with EMC, Safety and Medical standards
- Lead Free and RoHS compliant
- Only high quality components used
- Internal antenna or external antenna connector
- Different connector and mounting options
- Industrial and Automotive temperature range -30 - +85°C
- Individually tested and tuned in production
- Custom factory configuration possible

connectBlue

Technical Data

SPECIFICATIONS

Bluetooth Support

Bluetooth version 2.0 (Qualified and Listed as Product)
Wireless Multidrop™ with up to 7 slaves
Supported Bluetooth Profiles:
Generic Access Profile (GAP)
Serial Port Profile (SPP)
Dial-up networking Profile (DUN GW, DUN DT)

Class I +20 dBm (>300 m)

Bluetooth Chipset and Stack

Product based on Philips well known BGB204 chipset and Philips Host Stack

Software

All software is included in the module.
Configurable locally or over Bluetooth using
AT Commands or PC Wizard
ECI protocol

Serial Interface

RS232 or UART Logic-Level
Supported baud rates: 300 – 921.6k
Support for non-standard baud rates
Flow control: CTS/RTS or none

Power Supply

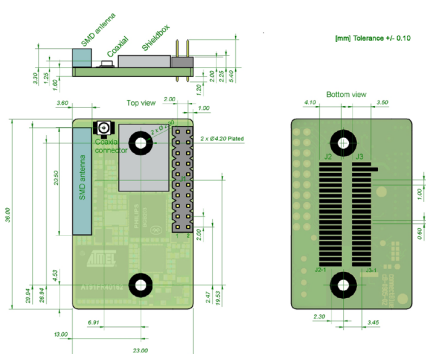
3.3 - 6.0 VDC

Current Consumption

Min: 15 mA
Max: 89 mA (peak)

Dimension/Size (Typically)

23 x 36 x 5 mm



Type Approval

R&TTE (Europe)
FCC/CFR 47 part 15 unlicensed modular transmitter approval
IC (Industrie Canada)

Environmental

Maximum operating temperature: -30 - +85 °C
Storage temperature: -40 - +85°C
Humidity RH 5-90% non-condensing
Shock and vibration: IEC 61131-2

Certifications and Compliance

R&TTE Directive 1999/5/EC
EN 300 328 V1.6.1 (2004-11)

EMC Directive: 89/336/EEC

EN 301 489-1 V1.4.1 (2002-08)
EN 301 489-17 V1.2.1 (2002-08)
EN 61000-6-2 (2001)

Safety Compliance

EN 60950-1:2001 and/or IEC 60950-1:2001 (1st Edition)
EN 60950-1/A11:2004 + Corrigendum:2004

Medical Electrical Equipment

IEC 60601-1-2 (2001)

Order Number

- CB-OEMSPA333i-02 OEM Serial Port Adapter 333i Internal Antenna and Standard J1 Connector
- CB-OEMSPA333i-04 OEM Serial Port Adapter 333i Internal Antenna (no J1 Connector)
- CB-OEMSPA333x-02 OEM Serial Port Adapter 333x External Antenna and Standard J1 Connector
- CB-OEMSPA333x-04 OEM Serial Port Adapter 333x External Antenna (no J1 Connector)

DISTRIBUTORS NEAR YOU

connectBlue

connectBlue AB • Norra Vallgatan 64 • SE-211 22 Malmö • Sweden
Phone +46 40-6307100 • Fax +46 40-237137 • info@connectblue.se • www.connectblue.se

Printed in Sweden. ©2006 connectBlue AB. All rights reserved. All specifications are subject to change without notice.
BLUETOOTH™ is a trademark owned by the Bluetooth SIG Inc. Windows is a registered trademark by Microsoft.