



3758 W. Belmont Ave. Chicago, IL 60618-5292
Tel: 773.463.6211 Fax: 773.463.3387




HOME
CUSTOM METAL PARTS ▾
STANDARD PRODUCTS ▾
DESIGN GUIDE ▾
QUALITY ▾
WHAT'S NEW ▾
CONTACT US ▾
FEEDBACK

REMOVABLE LID SHIELDS

Versatile New Board Level Multi-Cavity RF Shield with Snap-Fix Dimpled Lid Closure

Completely customizable, Fotofab-manufactured shields offer RF and board level engineers the design flexibility and cost efficiency they need to solve tough real estate issues on congested circuit boards.

Fotofab's production process allows design engineers the latitude to create shielding solutions without dimensional constraints. Similar products are available, but many shield fabricators can only offer designs based on length and width geometries, generally in ¼-inch increments. Designable to virtually any desired dimension, Fotofab can economically fabricate shields into L, U, and other shapes to accommodate multiple components within complex circuit board layouts.

Features

- Design flexibility
- Low tooling cost
- Fast lead-times
- Simple assembly
- Customizable
- Explore multiple designs
- Saves board space
- Cost efficient
- Prototype to production

Fotofab shields offer relief from space or other issues/objectives that can crop up in the design phase or during production planning. For example, the dimpled, snap-fit lid completes the multi-cavity shield in one, simple assembly maneuver. The dimpling allows disassembly just as easily, permitting component access for testing and other procedures while eliminating the need for space-robbing spring fingers or other lid-fixing hardware.

[Request a sample shield \(Click Here\)](#)

Email this page to a friend or colleague:

This will send an email with a link to this page.

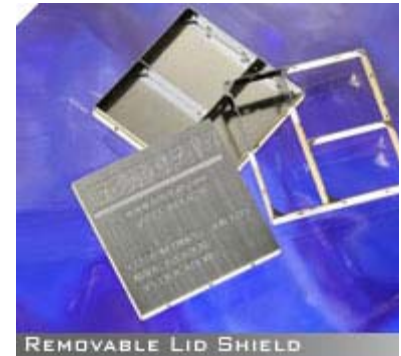
Your Name:

Your Email:

Friends Name:

[Home](#) > [Standard Products](#) > Rem

Precision thin metal design eliminates space-related design a assembly trade-offs



For more information on Fotofab's precision parts fabricating capabilities, and to review our Design Guide please visit: <http://www.fotofab.com/designguide>.

E-mail engineering@fotofab.com for more information.

Friends Email:

Email To Friend

Privacy Policy: We do not send unsolicited email to anyone except to customers who have expressed an interest in receiving information electronically. Our mailing lists are used only by Fotofab, and are disclosed to no other parties.

[Home](#) :: [Custom Metal Parts](#) :: [Standard Products](#) :: [Design Guide](#) :: [Quality](#) :: [What's New](#) :: [Contact Us](#) :: [Customer Feedback](#) :: [Site Map](#)

Copyright 2003, Fotofab. All Rights Reserved.