



# EasyBee Evaluation Board™

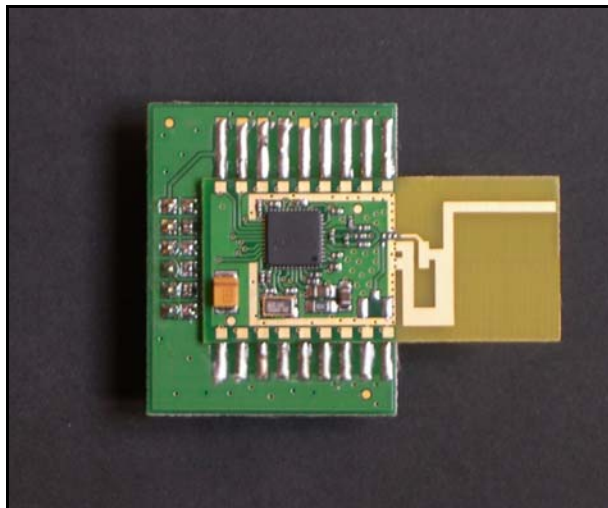
For research and development of IEEE 802.15.4 and ZigBee radios

## Summary

One of the easiest ways to evaluate and develop products using the EasyBee IEEE 802.15.4 radio module is with the EasyBee Evaluation Board. It is a regular EasyBee radio mounted on an adapter which allows it to be plugged directly into the PICDEM-Z ZigBee Development Kit (not included, available from [buy.microchip.com](http://buy.microchip.com)).

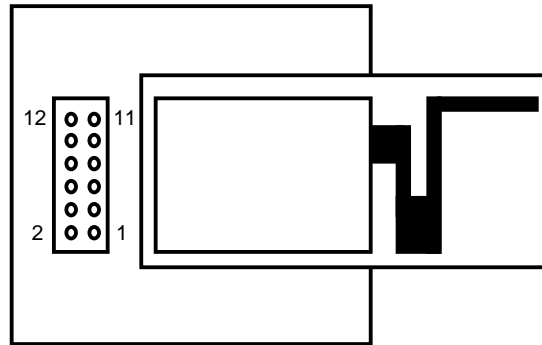
The EasyBee Evaluation Board is electrically identical to Microchip Technology's 2.4GHz daughter card and is a direct plug-in equivalent.

The EasyBee module itself is production-ready and provides a fast route to market for IEEE 802.15.4 and ZigBee products. CE / FCC qualification is in process. A range of all-weather enclosures and directional reflectors is also in development.



## Features

- Integral quarter wave RF stage with matched balun.
- Signature 'S' antenna, free-space range 120m, compact, low 'hand-effect' design
- Texas Instruments CC2420 RF Transceiver
- 12-pin 0.1" pitch connection to PICDEM-Z motherboard



Pin Descriptions		
1	Vdd	+3.3V power
2	Vss	Power ground reference
3	Resetsn	Reset (active low)
4	VRegEn	Voltage regulator enable (active high)
5	FIFO	Data in FIFO
6	CSn	Chip select (active low)
7	SI	SPI serial data input
8	SO	SPI serial data output
9	SCK	SPI serial data clock
10	CCA	Clear channel assessment
11	SFD	Start of frame delimiter
12	FIFOP	FIFO near full

## Ordering Information

Manufactured to ISO9001:2000



Part No	Description
Eval-EASYBEE	IEEE 802.15.4 radio evaluation board



Developed by:

FlexiPanel Ltd  
2 Marshall St, 3rd Floor,  
London W1F 9BB, United Kingdom  
email: [support@flexipanel.com](mailto:support@flexipanel.com)  
[www.flexipanel.com](http://www.flexipanel.com)



Manufactured by:

R F Solutions Ltd  
Unit 21, Cliffe Industrial Estate,  
Lewes, BN8 6JL, United Kingdom  
email : [sales@rfsolutions.co.uk](mailto:sales@rfsolutions.co.uk)  
<http://www.rfsolutions.co.uk>  
Tel: +44 (0)1273 898 000