



USB FM RADIO USER'S GUIDE

1. USB FM Radio Setup

Follow the instructions listed below to set up and configure the USB FM Radio.

1. Download the USB FM Radio Player from the Silicon Laboratories website at www.silabs.com/usbradio.
2. Connect the USB FM Radio to an available USB Port on the PC.
3. Run the USB FM Radio Player.
4. The first time the Radio is connected, the USB FM Radio Setup Wizard shown in Figure 1 will appear.
5. Enter the correct location to specify the region-specific FM band.
6. Optionally, enter local radio station frequencies as Presets for the USB Radio player.
7. Press the Done button to configure the USB FM Radio Player.
8. The USB FM Radio Player will now connect to the USB FM Radio and will tune to the default radio station.
9. If configured, press one of the Station Preset buttons. Otherwise, press the Seek button to find a local radio station.

**One-time set-up enables
configuration of presets and
region specific FM band**

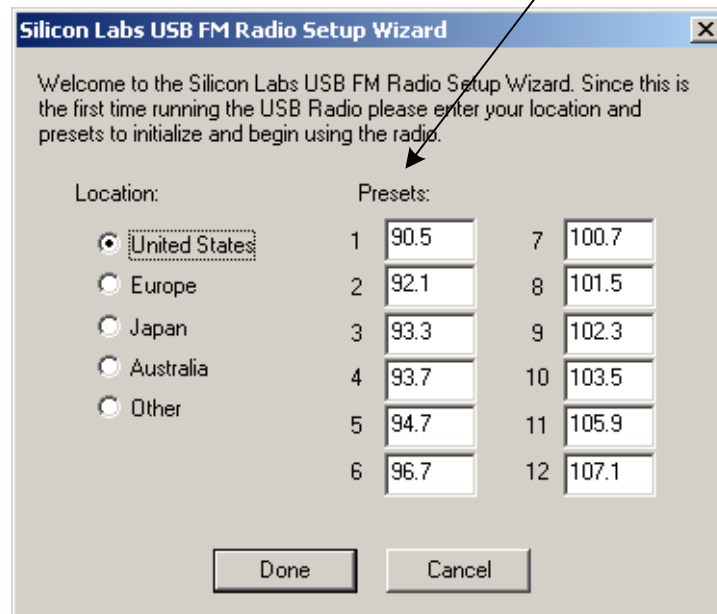


Figure 1. Initial USB FM Radio Player Setup

USB FM Radio-RD

2. USB FM Radio Player

Figure 2 shows each of the features of the USB FM Radio Player. Additionally, the player includes the following features:

- Press the desired Station Preset button until a beep is heard to set the button to the current station.
- Press the Seek & Scan button until a beep is heard to begin a scan through all available stations.
- Press the Preset Scan button to scan through the preset stations.
- Press the Configuration Options button to open the Configuration Options window shown in Figure 3.
- Press F1-F12 on the PC keyboard to select the corresponding Station Preset.
- Press the left and right arrow buttons on the PC keyboard to perform seek and scan functions.
- Press the up and down arrow buttons on the PC keyboard to perform tuning functions.
- Hover the mouse over each button to display tooltips and programmed stations.
- Right-click the Silicon Labs USB FM Radio icon in the systray menu to display a list of the station presets as well as an alternative way to seek and tune the radio.

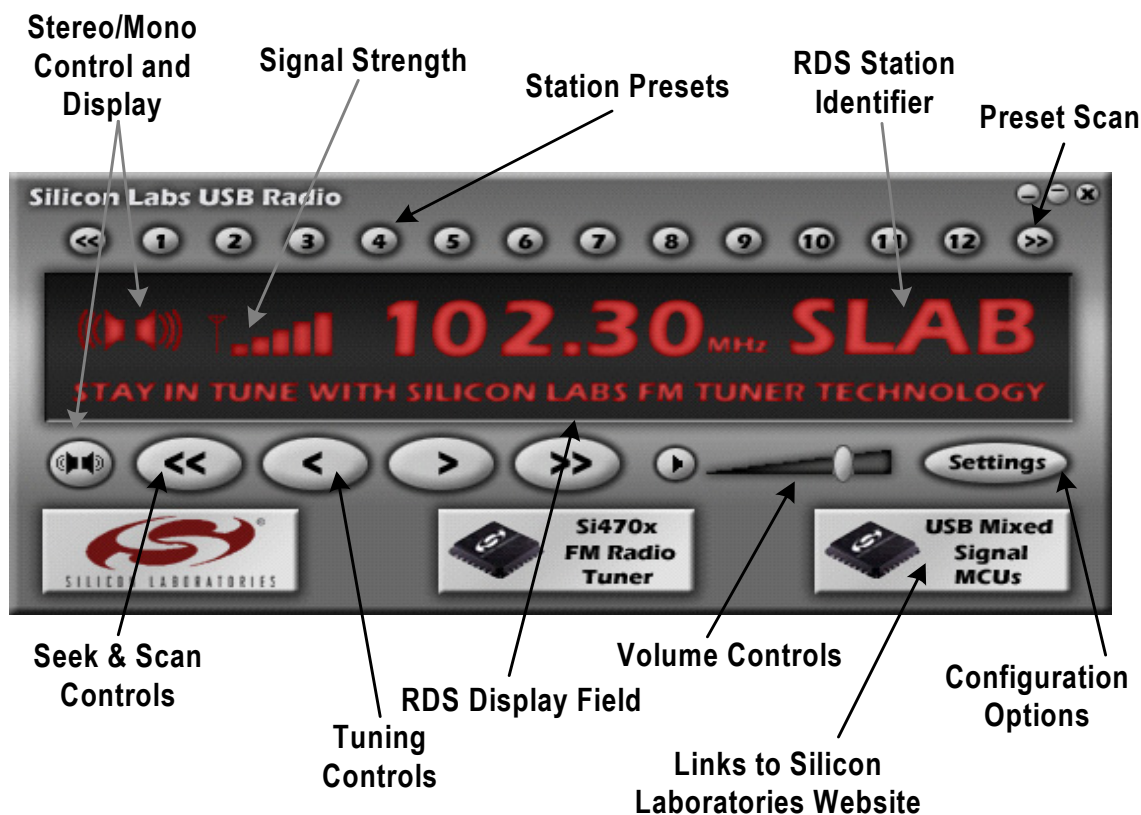


Figure 2. USB FM Radio Player

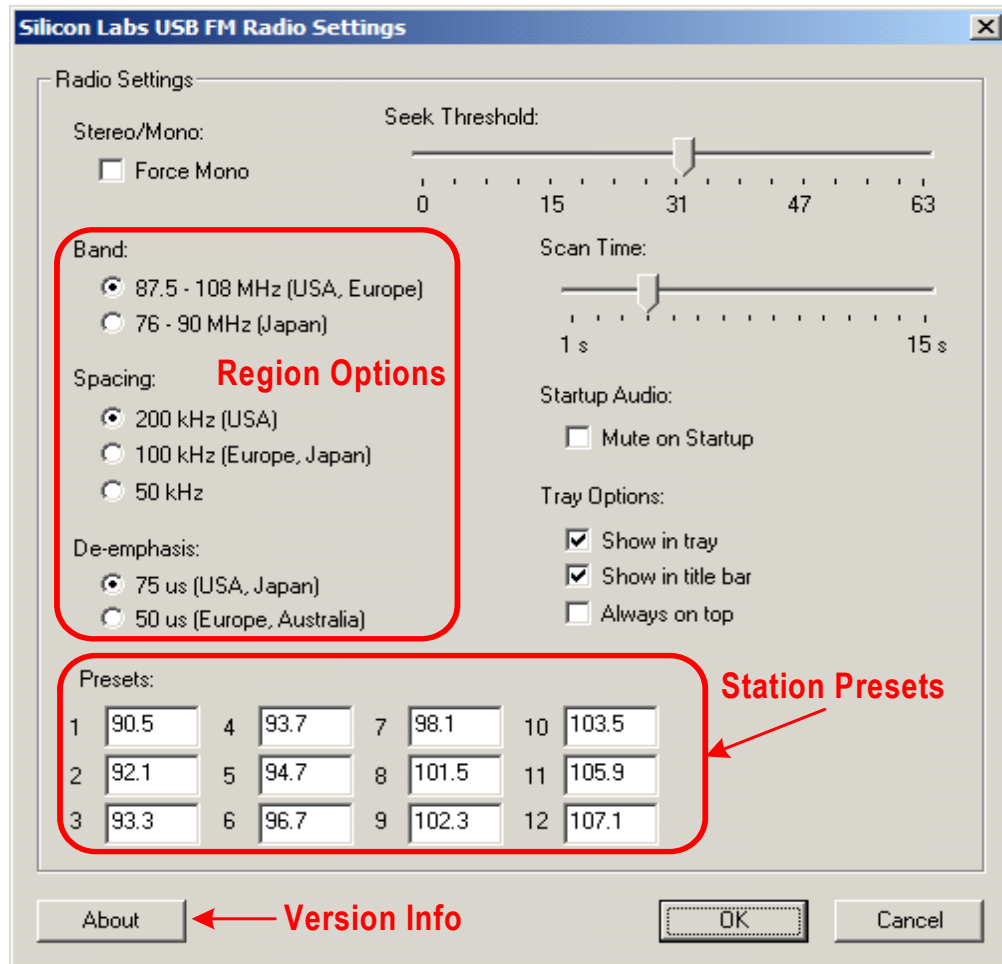


Figure 3. Configuration Options

USB FM Radio-RD

CONTACT INFORMATION

Silicon Laboratories Inc.
4635 Boston Lane
Austin, TX 78735
Email: MCUinfo@silabs.com
Internet: www.silabs.com

The information in this document is believed to be accurate in all respects at the time of publication but is subject to change without notice. Silicon Laboratories assumes no responsibility for errors and omissions, and disclaims responsibility for any consequences resulting from the use of information included herein. Additionally, Silicon Laboratories assumes no responsibility for the functioning of undescribed features or parameters. Silicon Laboratories reserves the right to make changes without further notice. Silicon Laboratories makes no warranty, representation or guarantee regarding the suitability of its products for any particular purpose, nor does Silicon Laboratories assume any liability arising out of the application or use of any product or circuit, and specifically disclaims any and all liability, including without limitation consequential or incidental damages. Silicon Laboratories products are not designed, intended, or authorized for use in applications intended to support or sustain life, or for any other application in which the failure of the Silicon Laboratories product could create a situation where personal injury or death may occur. Should Buyer purchase or use Silicon Laboratories products for any such unintended or unauthorized application, Buyer shall indemnify and hold Silicon Laboratories harmless against all claims and damages.

Silicon Laboratories and Silicon Labs are trademarks of Silicon Laboratories Inc.

Other products or brandnames mentioned herein are trademarks or registered trademarks of their respective holders.