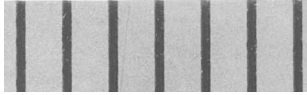


Type : **Coupler with Filter**

Part No : **EHF** _ _ _ _ _



■ Features

- Miniature, thin ($2.0 \times 1.25 \times t 0.95$)
- Cope with each frequency range
- With 2 fo, 3 fo filter

■ Recommended Applications

- Digital portable telephone
- Personal handy-phone system
- Mobile communication system

■ Typical Characteristics

| Part No. | EHFFD1728 | EHFFD1729 | EHF2NQ1453 | EHF2NT1810 |
|-------------------------------------|------------|--------------|--------------|--------------|
| Items | | | | |
| fo Frequency (MHz) | 880 to 915 | 1710 to 1785 | 1439 to 1468 | 1710 to 1910 |
| Insertion Loss (dB) | 0.45 max. | 0.45 max. | 0.4 max. | 0.45 max. |
| 2fo or 3fo Degree of a Decline (dB) | 22 min. | 22 min. | 22 min. | 15 min. |
| | 17 min. | 17 min. | 17 min. | 15 min. |
| Coupling Factor (dB) | 20 ± 1 | 20 ± 1 | 17 ± 1 | 20 ± 1 |
| Isolation (dB) | 28 min. | 28 min. | 28 min. | 28 min. |
| Dimension No. | ※1 | ※1 | ※1 | ※1 |

■ Dimensions in mm (not to scale)

