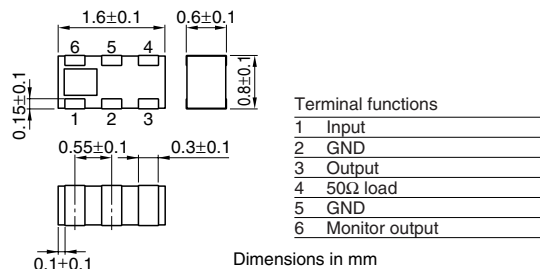


Multilayer Chip Directional Couplers For W-CDMA/Tx

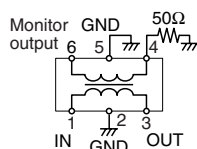
Conformity to RoHS Directive

HHM Series HHM2220SA3

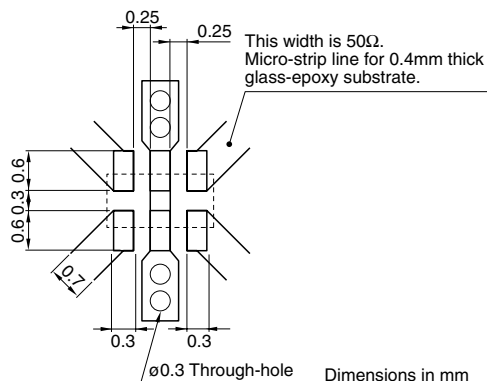
SHAPES AND DIMENSIONS



CIRCUIT DIAGRAM



RECOMMENDED PC BOARD PATTERNS



ELECTRICAL CHARACTERISTICS

Frequency range	1920 to 1980MHz
Coupling factor	16.0±1.0dB
Insertion loss	0.30dB max.* ¹ 0.35dB max.* ²
Isolation	25dB min.
VSWR	1.4 max.
Temperature range	Operating -40 to +85°C Storage -40 to +85°C

*¹ 25°C

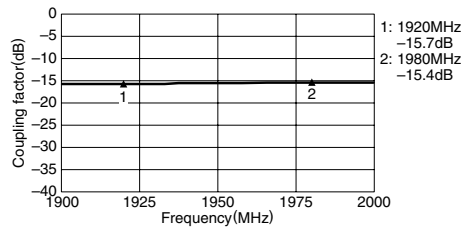
*² Operating temperature

- Conformity to RoHS Directive: This means that, in conformity with EU Directive 2002/95/EC, lead, cadmium, mercury, hexavalent chromium, and specific bromine-based flame retardants, PBB and PBDE, have not been used, except for exempted applications.

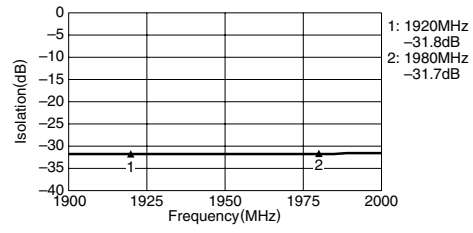
• All specifications are subject to change without notice.

FREQUENCY CHARACTERISTICS

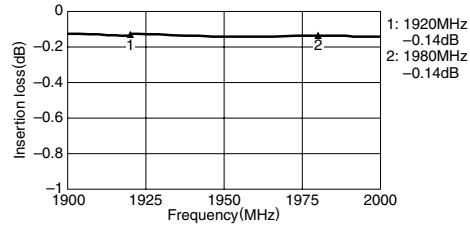
COUPLING



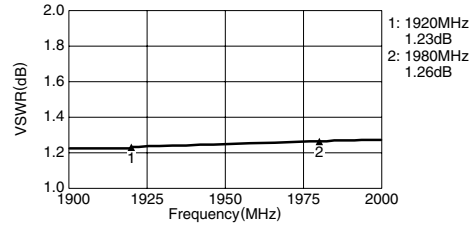
ISOLATION



INSERTION LOSS



VSWR



• All specifications are subject to change without notice.