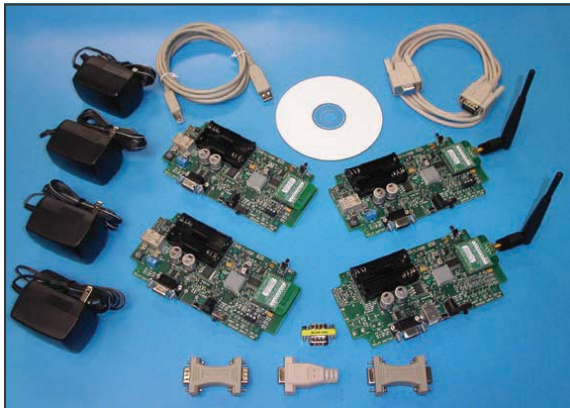


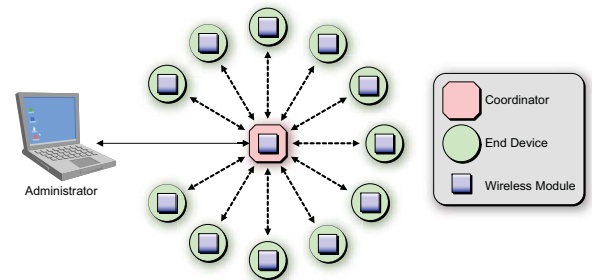
Synapse Network Evaluation Kit - EK1500



- ✓ Functioning network in minutes
- ✓ No programming necessary
- ✓ Pre-loaded functionality demos
- ✓ Comprehensive hardware, firmware, software suite
- ✓ Portal-Lite software (network administration)
- ✓ SNAP firmware pre-installed (network protocol)
- ✓ 2.4 GHz Coordinator and End Devices with pre-loaded functionality
- ✓ Step-by-step User Guide
- ✓ Accessory products

"Wireless Control Made Simple" are more than words at Synapse®. Synapse provides a comprehensive Network Evaluation Kit to allow users to immediately form, evaluate and modify a SNAP™ (Synapse Network Appliance Protocol™) wireless network unlike comparable technologies without the burden of poor performance and high memory overhead.

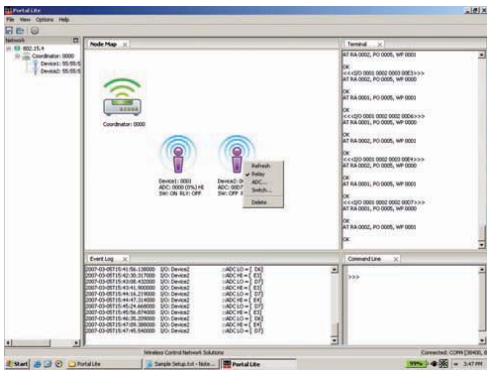
Simply load the PC software, connect to a coordinator, power everything up and a wireless control network will form.



Wireless Control Network Forms Automatically

From this point, you can run pre-loaded demos by selecting them from within the included Synapse Portal® Lite network administration software or you can easily create your own, even modifying end device behavior on the fly!

The easy-to-use graphical user interface gives you access to the full-featured control & monitoring functions that deliver complete network visibility and management. With Portal, you will see wireless devices graphically and control them individually or collectively, monitor activities, keep event logs, run scripts, and much more.



The key to this ease of use is Synapse's SNAP auto-forming network stack using the IEEE™ 802.15.4 physical layer. SNAP is designed and implemented in such a way that a user simply needs to attach sensors and actuators to an end device and then use Portal to tell the end device how to behave. **NO PROGRAMMING IS REQUIRED!** SNAP takes care of the network so you can focus on your application.

The EK1500 includes a Synapse Coordinator™ device and three Synapse End Devices™ equipped with a pre-installed temperature sensor, photocell, and buzzer that will provide network performance and evaluation right out of the box. Electrical specifications can be verified and examined at unique conditions. User's own sensors or actuators can be connected to End Devices to evaluate real-time application performance.

All specifications are subject to change without notice.



The Evaluation kit also includes a suite of user demos that are designed to show the full functionality and control ability of the SNAP network, all with the click of a mouse button.

You will see the ability to have sensors on one End Device switch outputs on another End Device or perform any combination of input/output functionality that you tell it to perform. All of this capability is yours - right out of the box.

Our primary objective at Synapse is to move our customers from concept to wireless network deployment as quickly as possible. With the Synapse Network Evaluation Kit, you can judge for yourself!

EK1500 Kit Contents:

Quantity	Part No.	Description
1	CO163F0-D6	Coordinator_w/PA_w/SMA connector_60K_SNAP
1	ED111F5-D5	ED_w/PA_w/SMA connector_32K_SNAP
1	ED111F5-85	ED_w/oPA_F Ant_32K_SNAP
1	ED111F5-C5	ED_w/Amp_F Ant_32K_SNAP
1	AC11000	6' USB Cable
1	AC11001	6' Serial Cable
4	AC13000	9V 350ma DC Power Supply
2	AC12000	Quarter-wave 5" dipole antenna with reverse-polarity SMA connector
1	AC11003	Serial Loopback Adapter
1	AC11004	Null Modem Adapter Female/Female
1	AC11005	Null Modem Adapter Male/Male
1	AC11006	Male/Male Gender Changer
1	SW14003-01	Portal Lite on CD
1	AC14001	Documentation

430-0107.01B



132 Export Circle
Huntsville, Alabama 35806
877-982-7888