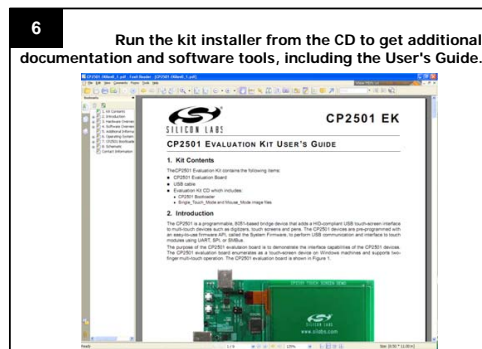
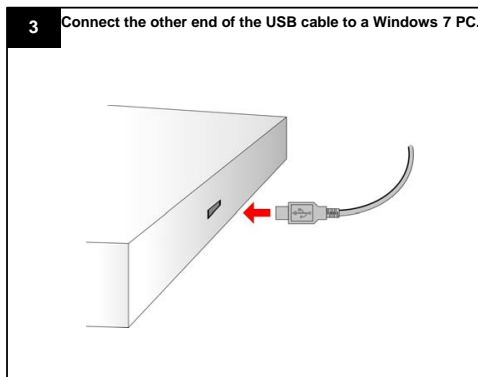
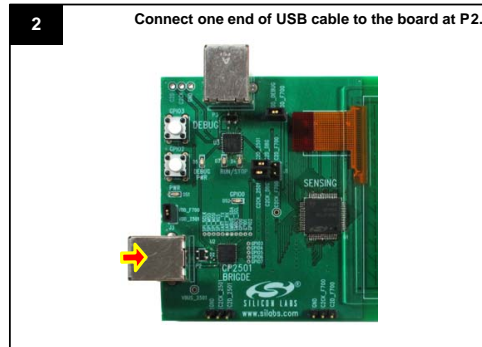
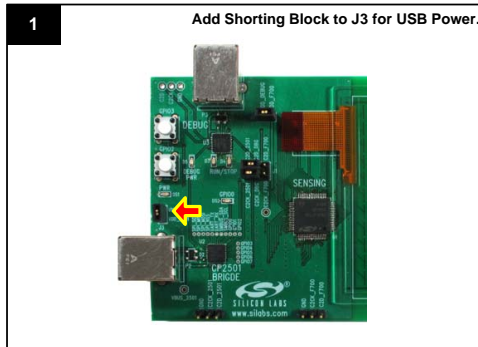


## CP2501 EVALUATION KIT QUICK-START GUIDE

### Step by Step Instructions:



### Additional Information

For additional information, use the following support resources:

- CP2501 web page at: [www.silabs.com/touchscreenusbbridge](http://www.silabs.com/touchscreenusbbridge)
- CP2501 EK Users Guide
- CP2501 Data Sheet
- AN464: CP2501 Programmer's Guide and API Specification

- Latest versions of application notes can be found at [www.silabs.com/products/mcu/Pages/ApplicationNotes.aspx](http://www.silabs.com/products/mcu/Pages/ApplicationNotes.aspx)
- MCU Knowledgebase (available at [www.silabs.com](http://www.silabs.com) → SUPPORT)
- Contact an Applications Engineer using the online information request form (available at [www.silabs.com](http://www.silabs.com) → SUPPORT → Contact Technical Support).