

# LTM8062: 32V, 2A $\mu$ Module Power Tracking Battery Charger

## DESCRIPTION

Demonstration circuit 1621A features the LTM<sup>®</sup>8062, a 32V, 2A  $\mu$ Module<sup>®</sup> power tracking battery charger. The demonstration circuit is designed to operate from a 9.75V to 32V input source, and to charge a 2-cell battery pack to a float voltage of 7.2V. The float voltage can easily be changed to a higher or lower voltage by adjusting the values of R2 and R3. R7 and R9 keep the converter off until the input has reached 8.5V, typically. JP2 allows for

easy selection of C/10 or timer charge termination. The LTM8062 data sheet must be read in conjunction with this quick start guide for working on or modifying the demo circuit 1621A.

**Design files for this circuit board are available at <http://www.linear.com/demo>**

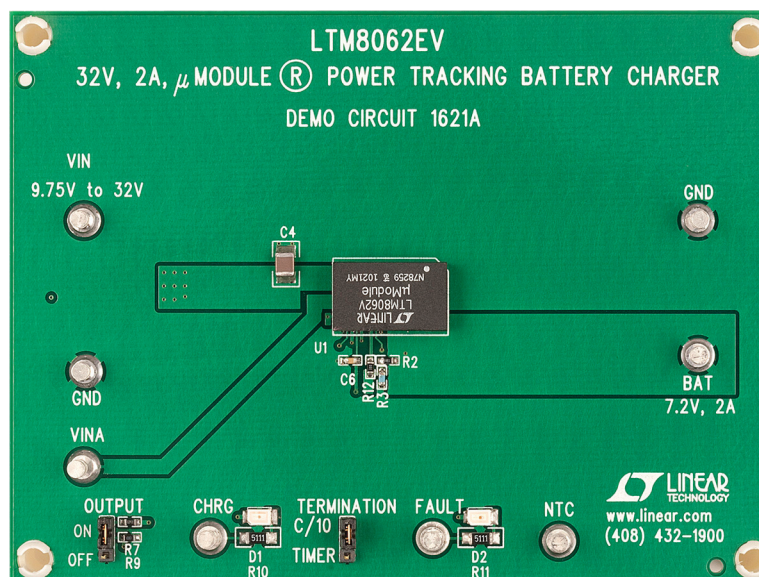
LT, LT, LTC, LTM,  $\mu$ Module, Linear Technology and the Linear logo are registered trademarks of Linear Technology Corporation. All other trademarks are the property of their respective owners.

## PERFORMANCE SUMMARY

Table 1. Typical Specifications of the Demo Board ( $T_A = 25^\circ\text{C}$ )

PARAMETER	VALUE
Input Supply Range	9.75V to 32V
Output Voltage Accuracy	7.19V to 7.3V
Typical Output Current Limit	2A

## BOARD PHOTO



## QUICK START PROCEDURE

Demonstration circuit 1621A is easy to set up to evaluate the performance of the LTM8062.

Using short twisted pairs of leads for any power connection, with all loads and power supplies off, refer to Figure 1 for the proper measurement and equipment setup.

Follow the procedure below:

1. Jumper and Power Supply Setting:

JP1 = ON            PS1 = OFF

JP2 = C/10        PS2 = OFF

- Turn on PS2 and slowly increase the voltage to 4.5V while monitoring the current into the BAT pin. If the current is less than 5mA, turn on PS1. Increase the voltage on PS1 to 8V while monitoring the input current. If the current is less than 5mA, increase PS1 to 12V.
- Verify that the battery charging current,  $I_{BAT}$ , is between 250mA and 350mA. The CHRG LED should be on and the FAULT LED should be off.
- Increase PS2 until  $V_{BAT}$  is 6.3V. Verify the input current,  $I_{IN}$ , is between 1A and 1.5A, the battery current,  $I_{BAT}$ , is between 1.775A and 2.225A and that the CHRG LED is on.
- Increase PS2 until  $V_{BAT}$  is 7.4V. Verify the battery charging current,  $I_{BAT}$ , is less than 5mA and that the CHRG LED is off.
- Decrease PS2 until  $V_{BAT}$  is 6.8V. Verify the battery current,  $I_{BAT}$ , is between 1.775A and 2.225A and that the CHRG LED is on.
- Set JP1 to off. Verify the charging current,  $I_{BAT}$ , is less than 5mA and that the FAULT LED and the CHRG LED are off.
- Set JP1 to on. Connect a jumper from the NTC pin to ground. Verify the charging current,  $I_{BAT}$ , is less than 5mA and that the FAULT LED and the CHRG LED are on.
- Remove the jumper from NTC to ground. Verify the charging current,  $I_{BAT}$ , is between 1.775A and 2.225A and that the FAULT LED is off and the CHRG LED is on.
- At this point, vary PS1 between the 9.75V to 32V range if desired, and verify the charging current is between 1.775A and 2.225A and that the CHRG LED is on.
- This concludes the test. Turn off PS1 and PS2.

QUICK START PROCEDURE

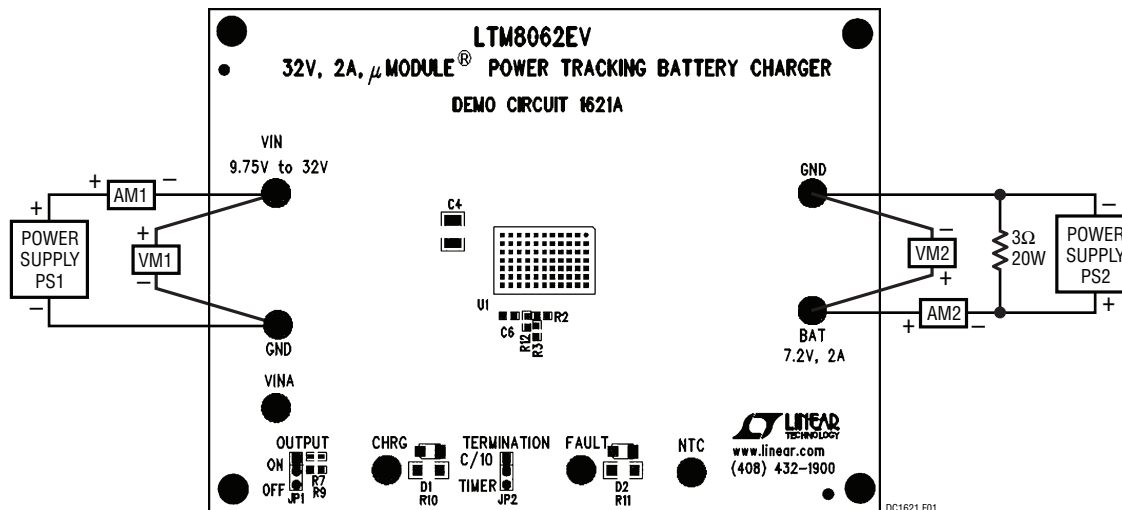


Figure 1. DC1621A Proper Equipment Setup

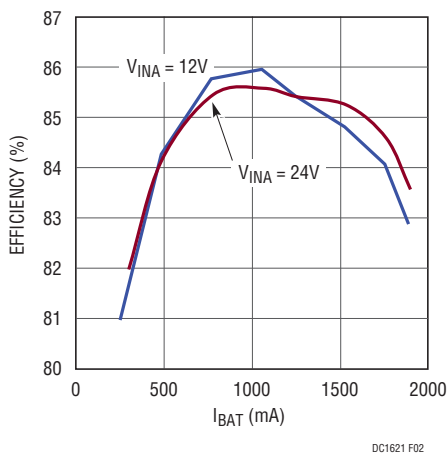


Figure 2. Efficiency vs  $I_{BAT}$ , 7.2V Float

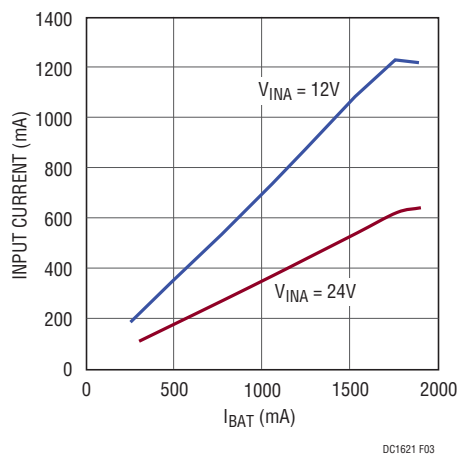


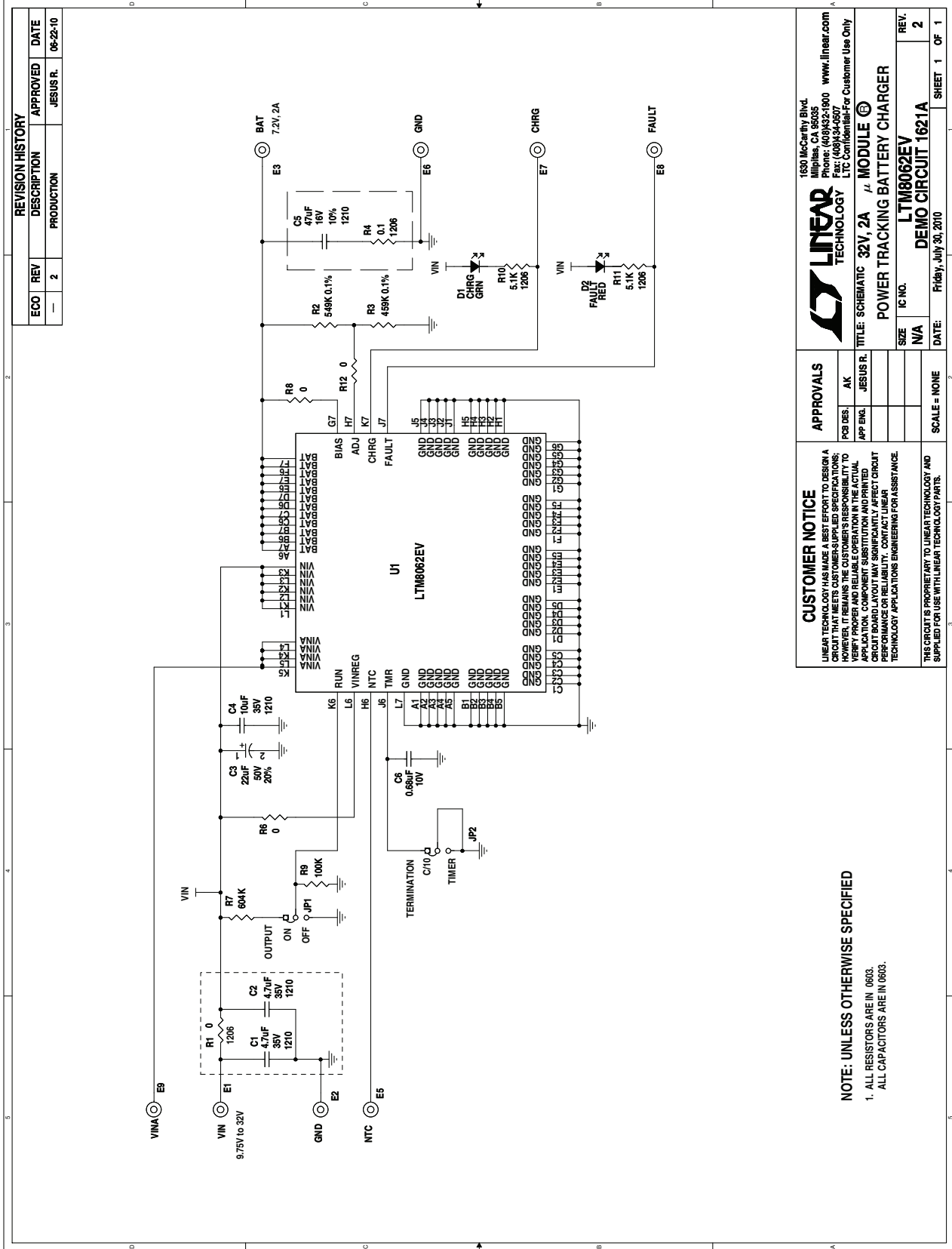
Figure 3. Input Current vs  $I_{BAT}$ , 7.2V Float

# DEMO MANUAL DC1621A

## PARTS LIST

ITEM	QTY	REFERENCE	PART DESCRIPTION	MANUFACTURER/PART NUMBER
<b>Required Circuit Components for DC1621A</b>				
2	1	C3	Cap. ,SMT, 22µF, 50V, 20%	Sanyo, 50CE22BS
3	1	C4	Cap., X5R, 10µF, 35V, 20%, 1210	Taiyo Yuden, GMK325BJ106MN-T
5	1	C6	Cap., X5R, 0.68µF, 10V, 20%,0603	AVX, 0603YD684KAT
12	1	R2	Res., Chip, 549k, 0.1%, 0603	Vishay, TNPW0603549KBKEA
13	1	R3	Res., Chip, 459k, 0.1%, 0603	Vishay, TNPW0603459KBKEA
19	1	U1	I.C. LTM8062, LGA-77-15 ×9	Linear Technology Corporation LTM8062EV
<b>Additional Demo Board Circuit Components</b>				
1	0	C1, C2	OPT	
4	1	C5	Cap., X5R, 47µF, 16V, 20%, 1210	Taiyo Yuden, EMK325BJ476MM-T
6	1	D1	LED-LN Green	Panasonic, LN1351CTR
7	1	D2	LED-LN Red	Panasonic, LN1251CTR
11	1	R1	Res., Chip, 0Ω 1/16W 1 AMP, 1206	Vishay, CRCW12060000Z0EA
14	1	R4	Res, Chip, 0.1Ω, 1/8W, 1%,1206	Vishay, WSL1206R1000FEA
15	3	R6, R8, R12	Res., Chip, 0Ω 1/16W , 0603	Vishay, CRCW06030000Z0EA
16	1	R7	Res., Chip, 604k, 1%, 0603	Vishay, CRCW0603604KFKEA
17	1	R9	Res., Chip, 100k, 1%, 0603	Vishay, CRCW0603100KFKEA
18	2	R10, R11	Res., Chip, 5.1k, 1%, 1206	Vishay, CRCW12065K10FKEA
<b>Hardware for Demo Board Only</b>				
8	8	E1, E2, E3, E5, E6, E7, E8, E9	Turret, Testpoint	Mill Max 2501-2-00-80-00-00-07-0
9	2	JP1, JP2	Headers, 3 Pins 2mm Ctrs.	Samtec TMM-103-02-L-S
10	2	XJP1, XJP2	Shunt, 2mm Ctrs.	Samtec 2SN-BK-G

**SCHEMATIC DIAGRAM**



**NOTE: UNLESS OTHERWISE SPECIFIED**  
 1. ALL RESISTORS ARE IN  $\Omega$  OR  $\Omega$ .  
 ALL CAPACITORS ARE IN  $\mu$ F.



Information furnished by Linear Technology Corporation is believed to be accurate and reliable. However, no responsibility is assumed for its use. Linear Technology Corporation makes no representation that the interconnection of its circuits as described herein will not infringe on existing patent rights.

# DEMO MANUAL DC1621A

---

## DEMONSTRATION BOARD IMPORTANT NOTICE

Linear Technology Corporation (LTC) provides the enclosed product(s) under the following **AS IS** conditions:

This demonstration board (DEMO BOARD) kit being sold or provided by Linear Technology is intended for use for **ENGINEERING DEVELOPMENT OR EVALUATION PURPOSES ONLY** and is not provided by LTC for commercial use. As such, the DEMO BOARD herein may not be complete in terms of required design-, marketing-, and/or manufacturing-related protective considerations, including but not limited to product safety measures typically found in finished commercial goods. As a prototype, this product does not fall within the scope of the European Union directive on electromagnetic compatibility and therefore may or may not meet the technical requirements of the directive, or other regulations.

If this evaluation kit does not meet the specifications recited in the DEMO BOARD manual the kit may be returned within 30 days from the date of delivery for a full refund. **THE FOREGOING WARRANTY IS THE EXCLUSIVE WARRANTY MADE BY THE SELLER TO BUYER AND IS IN LIEU OF ALL OTHER WARRANTIES, EXPRESSED, IMPLIED, OR STATUTORY, INCLUDING ANY WARRANTY OF MERCHANTABILITY OR FITNESS FOR ANY PARTICULAR PURPOSE. EXCEPT TO THE EXTENT OF THIS INDEMNITY, NEITHER PARTY SHALL BE LIABLE TO THE OTHER FOR ANY INDIRECT, SPECIAL, INCIDENTAL, OR CONSEQUENTIAL DAMAGES.**

The user assumes all responsibility and liability for proper and safe handling of the goods. Further, the user releases LTC from all claims arising from the handling or use of the goods. Due to the open construction of the product, it is the user's responsibility to take any and all appropriate precautions with regard to electrostatic discharge. Also be aware that the products herein may not be regulatory compliant or agency certified (FCC, UL, CE, etc.).

No License is granted under any patent right or other intellectual property whatsoever. **LTC assumes no liability for applications assistance, customer product design, software performance, or infringement of patents or any other intellectual property rights of any kind.**

LTC currently services a variety of customers for products around the world, and therefore this transaction **is not exclusive**.

**Please read the DEMO BOARD manual prior to handling the product.** Persons handling this product must have electronics training and observe good laboratory practice standards. **Common sense is encouraged.**

This notice contains important safety information about temperatures and voltages. For further safety concerns, please contact a LTC application engineer.

Mailing Address:

Linear Technology  
1630 McCarthy Blvd.  
Milpitas, CA 95035

Copyright © 2004, Linear Technology Corporation