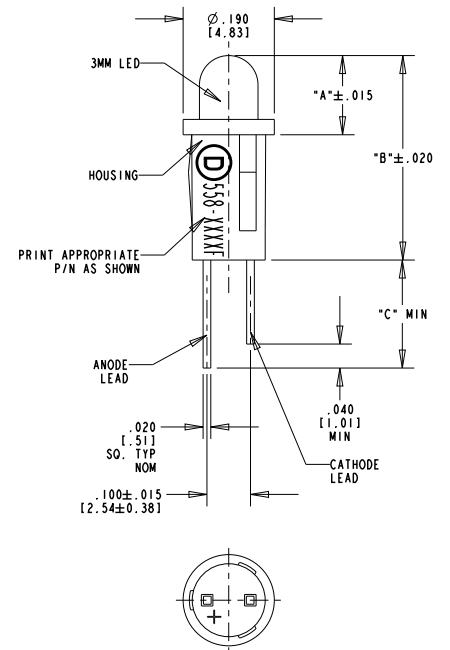


CATALOG NO.	Vr (V)		Ir (mA)		LED EPOXY COLOR	LED CHIP	PEAK WAVELENGTH (nm)	LUMINOUS INTENSITY Ir (mcd)		REVERSE VOLTAGE V _R (V)	DIM "A"	DIM "B"	DIM "C"
	TYP	MAX	TYP	MAX				MIN	TYP				
558-0101-001F	2.0	3.0	10	20	RED DIFF.	GaAs	650	3.6	10.0	3	.111	.391	.755
558-0102-001F	5.0		10	15	RED DIFF.	GaAsP/GaP	635	1.5	4.0	5	.101	.381	.828
558-0201-001F	2.1	3.0	10	25	GREEN DIFF.	GaP	563	5.6	16.0	3	.111	.391	.755
558-0202-001F	5.0		10	15	GREEN DIFF.	GaP	565	2.0	8.0	5	.101	.381	.828
558-0301-001F	2.1	3.0	10	20	YELLOW DIFF.	GaAsP/GaP	585	2.2	6.3	3	.111	.391	.755
558-0302-001F	5.0		10	15	YELLOW DIFF.	GaAsP/GaP	585	2.0	8.0	5	.101	.381	.828
558-0401-001F	1.5	2.2	10	25	ORANGE DIFF.	GaAsP/GaP	600	3.0	6.5	5	.101	.381	.848
558-0501-001F	2.1	2.8	20	40	WATER CLEAR	GaP	565	19.0	70.0	4	.101	.381	.828
558-0601-001F	1.9	2.4	20	50	WATER CLEAR	AlInGaP	594	35.0	200.0	5	.101	.381	.902
558-0701-001F	1.8	2.4	20	40	WATER CLEAR	AlGaAs	660	60.0	170.0	4	.101	.381	.828
558-1101-001F	1.7	2.2	2	7	RED DIFF.	GaAsP/GaP	635	1.0	1.8	5	.101	.381	.878
558-1201-001F	1.8	2.7	2	7	YELLOW DIFF.	GaAsP/GaP	585	1.0	1.6	5	.101	.381	.878
558-1301-001F	1.9	2.2	2	7	GREEN DIFF.	GaP	565	1.0	1.6	5	.101	.381	.878
558-1501-001F	2.1	2.8	10	30	GREEN TINTED NON-DIFFUSED	GaP	565	19.0	70.0	5	.101	.381	.828
558-1601-001F	2.1	2.8	10	20	YELLOW TINTED NON-DIFFUSED	GaAsP/GaP	585	5.6	19.0	5	.101	.381	.828
558-1701-001F	1.8	2.4	20	40	RED TINTED NON-DIFFUSED	AlGaAs	660	40.0	135.0	4	.101	.381	.828
558-1801-001F	1.8	2.4	20	40	RED DIFF.	AlGaAs	660	19.0	60.0	4	.101	.381	.828

REV	ECN NO	REVISIONS	DRN	CKD	APP	DATE
A		NEW RELEASE	TWC	TC	RP	8-30-05
B		REMOVED WIRE AND PLATING CALLOUTS; ADDED RoHS COMPLIANT NOTE AND "REV" COLUMN TO REVISION BLOCK	TWC	TC	RP	9-8-05
C		ADDED DIM "A", "B", & "C"	AJF	KLJ	CJC	9-18-09



NOTES:

- REQUIRES EXTERNAL RESISTOR.
- REQUIRES EXTERNAL RESISTOR, MAX. FORWARD D.C. CURRENT 7mA.
- RECOMMENDED MOUNTING HOLE: .155 - .158 DIA. ON PANELS .031 THRU .062 THICK.

RoHS Compliant 558-XX0X-001F Snap-in PMI

Part Numbers with the "F" suffix ending are RoHS Compliant.
 Example: 558-1501-001F
 The bag packaging is marked with "RoHS Compliant" label or equivalent markings.
 Parts can be wave soldered, dip soldered or hand soldered using typical lead-free soldering process with max 260°C temp. for 5 sec.

THIS DRAWING AND THE CONTENTS HEREIN ARE CONFIDENTIAL AND THE SOLE PROPERTY OF DIALIGHT. REPRODUCTION OF THIS DRAWING OR CONSTRUCTION OF ANY PARTS WITHIN THIS DRAWING ARE FORBIDDEN WITHOUT THE WRITTEN CONSENT OF DIALIGHT.		
SCALE: DRAWING SCALE	DRAWING NUMBER	REV
ALL DIM'S IN: INCHES (MM)	C-17286	C
TOLERANCES: UNLESS OTHERWISE SPECIFIED	TITLE 3MM LED PMI, SNAP-IN RoHS COMPLIANT	
FRACTIONS: ±1/64	MATERIAL	
DECIMALS (.XX): ±.01	DIALIGHT	
DECIMALS (.XXX): ±.005	1501 ROUTE 34 SOUTH FARMINGDALE, NJ 07727	
ANGLES: ±1°	FSCM 83330	
FINISH:	SHEET 1 OF 1 FAMILY TABLE:	