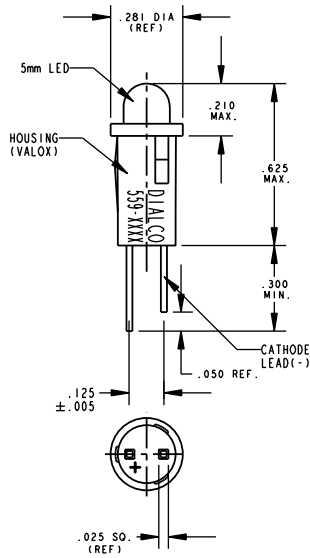


CATALOG NO.	TYP. V_f (V)	TYP. I_f (mA)	LED EPOXY COLOR	LED CHIP	PEAK WAVE. λ_p (nm)	LUM. INT. TYP. I_v (mcd)	REVISIONS		
							LTR	DRN.	DATE
559-0102-001	5.0	13	RED DIFF.	GaAsP	655	2.0	A	TC	9-30-97
559-0103-001	12.0	13	RED DIFF.	GaAsP	655	2.0	A	TC	9-30-97
559-0202-001	5.0	12	GREEN DIFF.	GaP	565	8.0	A	TC	9-30-97
559-0203-001	12.0	13	GREEN DIFF.	GaP	565	4.0	A	TC	9-30-97
559-0302-001	5.0	10	YELLOW DIFF.	GaAsP/GaP	583	8.0	A	TC	9-30-97
559-0303-001	12.0	13	YELLOW DIFF.	GaAsP/GaP	583	8.0	A	TC	9-30-97
559-1101-001	1.8	2*	RED DIFF.	GaAsP/GaP	635	2.0	A	TC	9-30-97
559-1201-001	1.9	2*	YELLOW DIFF.	GaAsP/GaP	583	1.8	A	TC	9-30-97
559-1301-001	1.8	2*	GREEN DIFF.	GaP	565	1.8	A	TC	9-30-97
559-2101-001	2.2	10**	RED DIFF.	GaAsP/GaP	650	7.0	A	TC	9-30-97
559-2201-001	2.1	10**	GREEN DIFF.	GaP	563	10.0	A	TC	9-30-97
559-2301-001	2.0	10**	YELLOW DIFF.	GaAsP/GaP	583	8.0	B	JMC	4-12-04
559-2501-001	1.9	10**	ORANGE DIFF.	GaAsP/GaP	600	7.0	A	TC	9-30-97

REV	ECN NO	REVISIONS	DRN	CKD	APP	QA	CM	DATE
A	—	ADDED ITEMS -8103 THRU -0303, -1101 THRU -1301 & -2101 THRU -2501 WITH ELECTRICAL SPECS; UPDATED ELECTRICAL SPECS FOR EXISTING ITEMS; RESISTOR NOTE BECAME NOTE 1; PREVIOUS NOTE 1 BECAME NOTE 2	TC	--	N.O.	--	--	9-30-97
B	—	REVISED LED SPECS FOR 559-2301-001; V_f WAS 2.1, PK. WV. WAS 585 AND LUM. INT. WAS 6.3	JMC					



NOTES:

- * REQUIRES EXTERNAL RESISTOR.
- ** REQUIRES EXTERNAL RESISTOR, MAX. FORWARD D.C. CURRENT 7 mA.
- RECOMMENDED MOUNTING HOLE: .249 - .252 DIA. ON PANELS .031 THRU .062 THICK.

THIS DRAWING AND THE CONTENTS HEREIN ARE CONFIDENTIAL AND THE SOLE PROPERTY OF DIALIGHT. REPRODUCTION OF THIS DRAWING OR CONSTRUCTION OF ANY PARTS WITHIN THIS DRAWING ARE FORBIDDEN WITHOUT THE WRITTEN CONSENT OF DIALIGHT.			
SCALE: 4:1		DRAWING NUMBER	REV
ALL DIM'S IN: INCHES (MM)		C-13569	B
TOLERANCES: UNLESS OTHERWISE SPECIFIED		TITLE	
FRACTIONS: ± 1/64		LED PANEL MOUNT INDICATOR	
DECIMALS (.XX): ± .02		MATERIAL	
DECIMALS (.XXX): ± .015		N/A	
DECIMALS (.XXXX): ± .0005		FINISH:	
ANGLES: ± 1°		N/A	
FINISH:		N/A	
FSCM 83330		Dialight 1501 ROUTE 34 SOUTH FARMINGDALE, NJ 07727	
SHEET 1 OF 1		FAMILY TABLE:	

1501 ROUTE 34 SOUTH
FARMINGDALE, NJ 07727