

4

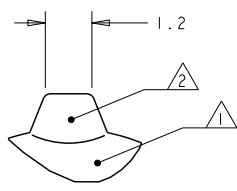
3

2

1

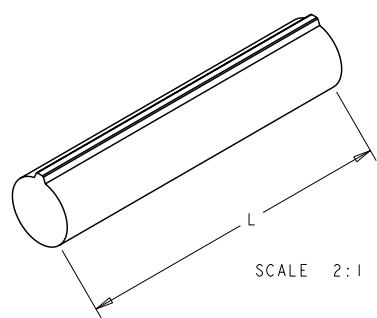
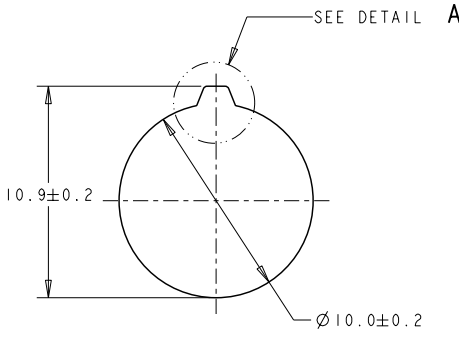
THIS DRAWING IS UNPUBLISHED. RELEASED FOR PUBLICATION 20
 © COPYRIGHT 20 BY TYCO ELECTRONICS CORPORATION. ALL RIGHTS RESERVED.

LOC		DIST		REVISIONS			
P	LTR	DESCRIPTION		DATE	DWN	APVD	
1		DRAWN		23APR2008	RB	CG	
2		REDUCED LENGTH TOLS ON -1,-2,-3,-4,-10		19AUG2008	RB	CG	
3		ADDED -11		01JUN2009	CD	CG	



DETAIL A
SCALE 10:1

- △1 MAT'L: CLEAR AREA: CLEAR OPTICAL ACRYLIC.
- △2 MAT'L: WHITE AREA: WHITE ACRYLIC.



400±10	1-2058295-1
178±10	1-2058295-0
1250±20	2058295-9
3000±20	2058295-8
2000±20	2058295-7
1000±20	2058295-6
760±20	2058295-5
610±10	2058295-4
460±10	2058295-3
305±10	2058295-2
150±10	2058295-1
L (mm)	TE P/N

TYCO ELECTRONICS
CONFIDENTIAL
AND PROPRIETARY

PROPOSED DESIGN
NOT PRODUCTION TOOLED

DESIGN IS SUBJECT TO
CHANGE WITHOUT NOTICE

<small>THIS DRAWING IS A CONTROLLED DOCUMENT FOR TYCO ELECTRONICS CORPORATION IT IS SUBJECT TO CHANGE AND THE CONTROLLING ENGINEERING ORGANIZATION SHOULD BE CONTACTED FOR THE LATEST REVISION.</small>		DWN 23APR2008 R BROWN CHK 23APR2008 C GINGRICH APVD 23APR2008 C GINGRICH	Tyco Electronics Harrisburg, PA 17105-3608
DIMENSIONS: mm	TOLERANCES UNLESS OTHERWISE SPECIFIED: 0 PLC ±0.5 1 PLC ±0.2 2 PLC ± 3 PLC ± 4 PLC ± ANGLES ±	NAME CO-EXTRUSION, LIGHTPIPE, 10mm, RAW	PRODUCT SPEC - APPLICATION SPEC - SIZE CAGE CODE DRAWING NO A3 00779 C-2058295 RESTRICTED TO -
MATERIAL -	FINISH -	WEIGHT -	CUSTOMER DRAWING SCALE 5:1 SHEET 1 OF 1 REV 3