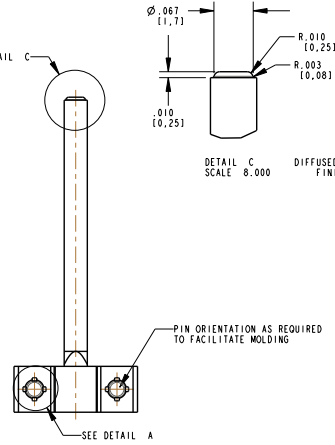
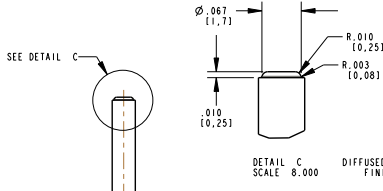
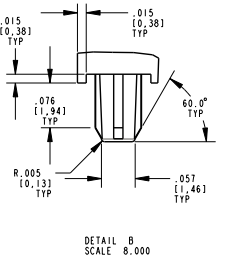
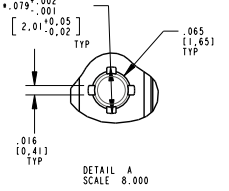
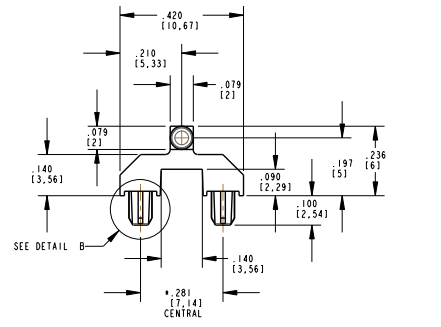
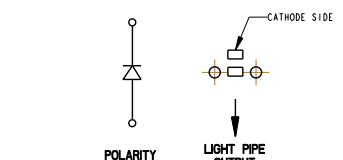
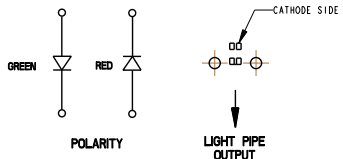
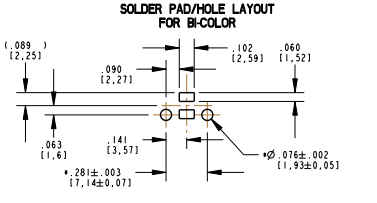
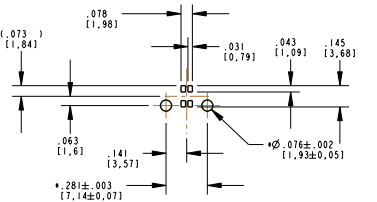
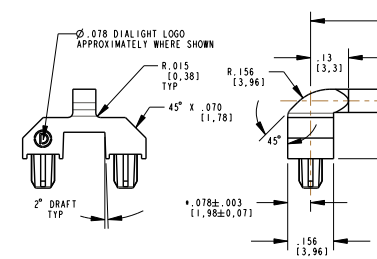


PART NUMBER TABLE			
DIM "L"	DIALIGHT PART NUMBER	DIM "L"	DIALIGHT PART NUMBER
10 mm	515-1141-100F	18 mm	---
10.5 mm	---	18.5 mm	---
11 mm	---	19 mm	---
11.5 mm	---	19.5 mm	515-1141-195F
12 mm	---	20 mm	---
12.5 mm	---	20.5 mm	---
13 mm	---	21 mm	---
13.5 mm	---	21.5 mm	---
14 mm	---	22 mm	515-1141-220F
14.5 mm	---	22.5 mm	---
15 mm	---	23 mm	---
15.5 mm	---	23.5 mm	---
16 mm	---	24 mm	---
16.5 mm	---	24.5 mm	---
17 mm	---	25 mm	515-1141-250F
17.5 mm	---	---	---

NOTES:

- LIGHT PIPE TO BE MOLDED IN A CLEAR, TRANSMISSIVE, UL 94-V0 POLYCARBONATE.
- LIGHT PIPE TO BE PRESSED INTO A .062 OR .093 THICK P.C. BOARD.
- LIGHT SOURCE: PLCC-2, PLCC-4 SMT LED OR EQUIVALENT.
597-3004-307F, BLUE 470nm
597-3323-307F, GREEN 525nm
597-3225-307F, YELLOW 590nm
597-3904-307F, WHITE
- * DENOTES CRITICAL DIMENSION OR SPECIFICATION.
- VARIABLE LENGTH LIGHT PIPE FROM 10mm MINIMUM TO 25mm MAXIMUM. BASIC PART NUMBER IS 515-1141-XXXX
EXACT LIGHT PIPE PART NUMBER TO BE DETERMINED BY LENGTH IN mm (DIMENSION "L").
LENGTHS MUST BE IN 0.5mm INCREMENTS. SEE CHART FOR EXACT PART NUMBERS.
- EACH DIFFERENT LENGTH REQUIRES AN ADDITIONAL CORE PIN TOOLING CHARGE.

REV	ECN NO	REVISIONS	DRN	QCD	APP	DATE
A	---	NEW RELEASE	TWC	N.O.	AV	5-11-05
B	---	REVISED TITLE BLOCK; MOVED DRAWING NUMBER; REPLACED DOMED FEATURE ON OUTPUT SURFACE WITH Ø.067 X .010 FEATURE; CORRECTED NOTES	TWC	TC	N.O.	6-3-05
C	---	ADDED "F" SUFFIX TO PIN FOR RoHS COMPLIANT DESIGNATION; REMOVED P/NS NOT TOOLED; ADDED "L" DIM IN DWG FIELD	TWC	---	---	---



RoHS Compliant 515-1141-XXXX 2mm Lightpipe Part Numbers with the "F" suffix ending are RoHS Compliant. Example: 515-1140-100F Packaging is marked with "RoHS Compliant" label or equivalent markings.

THIS DRAWING AND THE CONTENTS HEREIN ARE CONFIDENTIAL AND THE SOLE PROPERTY OF DIALIGHT. REPRODUCTION OF THIS DRAWING OR CONSTRUCTION OF ANY PARTS WITHIN THIS DRAWING ARE FORBIDDEN WITHOUT THE WRITTEN CONSENT OF DIALIGHT.	
SCALE: 4:000	DRAWING NUMBER: C-17211
ALL DIMS IN: INCHES (MM)	REV: C
TOLERANCES: UNLESS OTHERWISE SPECIFIED	PART NUMBER SEE CHART
FRACTIONS: ±1/64	TITLE LIGHTPIPE; 2MM DIA., 5MM CL
DECIMALS: ±.001; ±.01	ROHS COMPLIANT
DECIMALS: ±.001; ±.005	MATERIAL: SEE NOTES
ANGLES: ±1°	
FINISH: N/A	
FSCM: 83330	Dialight 1501 ROUTE 34 SOUTH FARMINGDALE, NJ 07727
	SHEET 1 OF 2 PART NUMBER TABLE