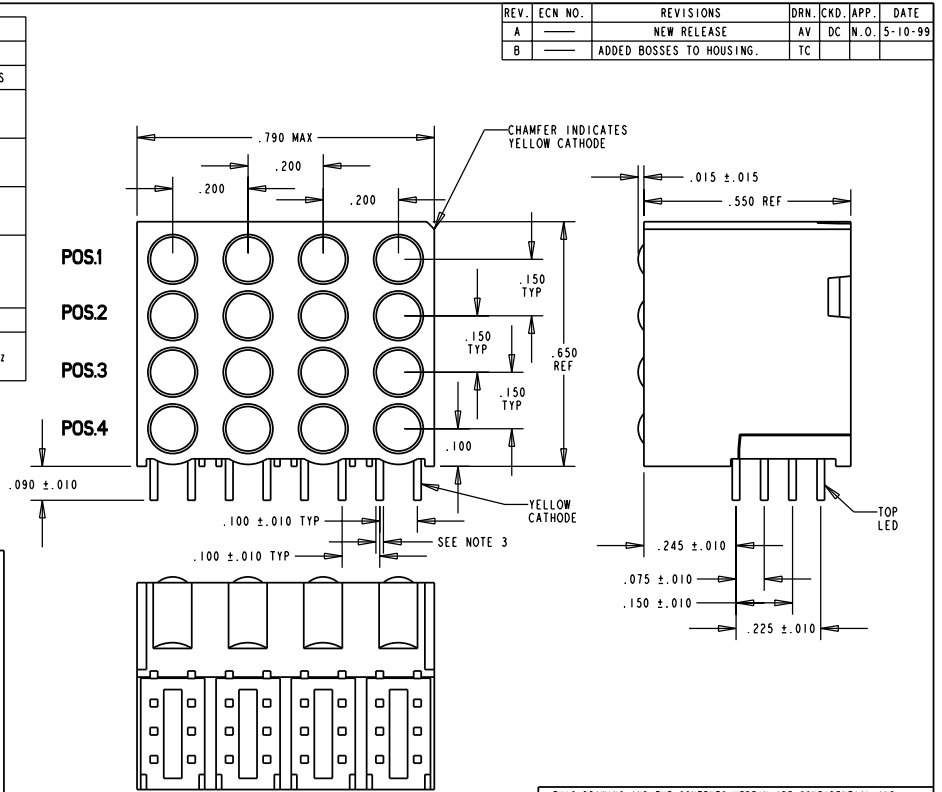
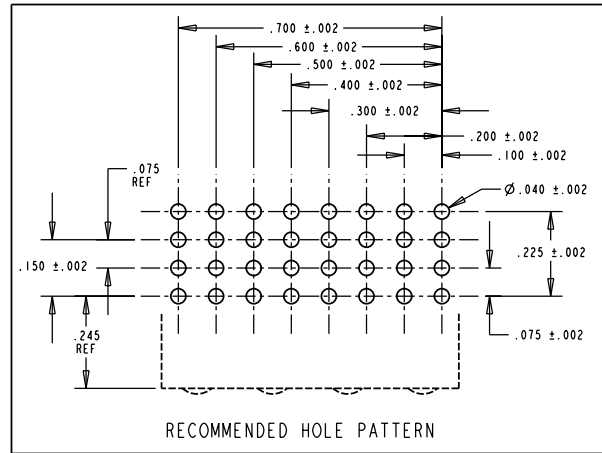


LED COLOR = YELLOW / GREEN BI-COLOR						
OPERATING CHARACTERISTICS AT 25°C AMBIENT						
CHARACTERISTICS	COLOR	MIN	TYP	MAX	UNITS	TEST CONDITIONS
LUMINOUS INTENSITY	GREEN	2.5	6.3		mcd	$I_f = 10 \text{ mA}$
	YELLOW	2.5	4.3			
FORWARD VOLTAGE	GREEN		2.1	2.8	V	$I_f = 20 \text{ mA}$
	YELLOW					
PEAK WAVELENGTH	GREEN		565		nm	
	YELLOW		585			
DOMINANT WAVELENGTH	GREEN		569		nm	MEASURED ON EXELTRON 2001
	YELLOW (Y3)	585		589		
	YELLOW (Y2)	583		587		
VIEWING ANGLE	ALL		80		Degree	
CAPACITANCE	GREEN		35		pF	$V_a = 0 \text{ V}, f = 1 \text{ MHz}$
	YELLOW		15			

LED COLOR	
POS. 1	YEL / GRN
POS. 2	YEL / GRN
POS. 3	YEL / GRN
POS. 4	YEL / GRN



- NOTES:
- LEADS TO FIT INTO HOLES SPACED AS PER HOLE PATTERN
 - LEADS TO BE FREE OF DEFORMATION AFTER BENDING AND CUTTING
 - .020 SQ. NOM. (POS. 1-3)
.024 X .020 NOM. (POS. 4)
 - PACKAGING =
BLOCKS PLACED IN CLEAR ANTISTATIC TRAY
500 BLOCKS / BOX
 - DIALIGHT PART NUMBER = 568-0016-810

REV.	ECN NO.	REVISIONS	DRN.	CKD.	APP.	DATE
A		NEW RELEASE	AV	DC	N.O.	5-10-99
B		ADDED BOSSES TO HOUSING.	TC			

THIS DRAWING AND THE CONTENTS HEREIN ARE CONFIDENTIAL AND THE SOLE PROPERTY OF DIALIGHT. REPRODUCTION OF THIS DRAWING OR CONSTRUCTION OF ANY PARTS WITHIN THIS DRAWING ARE FORBIDDEN WITHOUT THE WRITTEN CONSENT OF DIALIGHT.		
SCALE: 4:1	DRAWING NUMBER	REV
ALL DIM'S IN: INCHES	C-16536	B
TOLERANCES: UNLESS OTHERWISE SPECIFIED	TITLE	
FRACTIONS: ±1/64	(4X4) CBI BLOCK	
DECIMALS (.XX): ±.020	MATERIAL	
DECIMALS (.XXX): ±.010		
DECIMALS (.XXXX): ±.005		
ANGLES: ±°		
FINISH:	Dialight	1913 ATLANTIC AVE. MANASQUAN, N. J. 08736
FSCM 83330	SHEET OF	FAMILY TABLE: