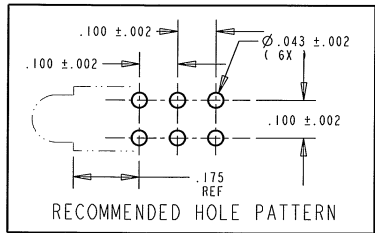
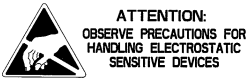
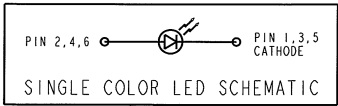


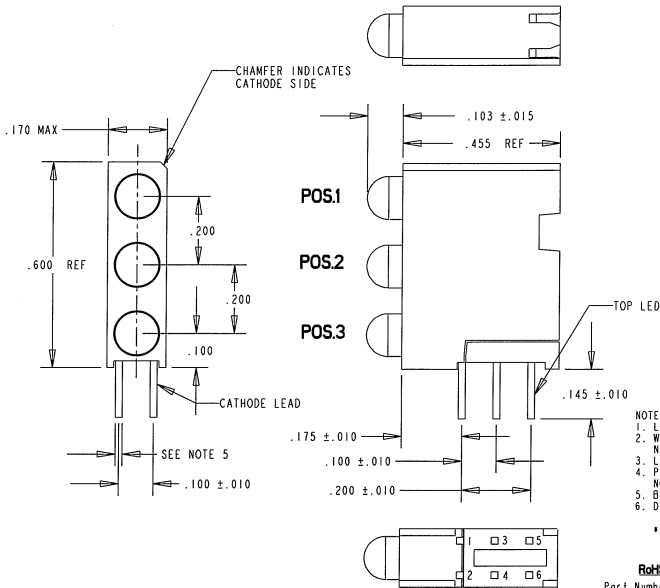
| PART NUMBER and LEGEND | LED COLOR | | |
|---------------------------|---------------|-----------------|-------------------|
| | POSITION 1 | POSITION 2 | POSITION 3 |
| 564-0100-824F | BLUE DIFFUSED | YELLOW DIFFUSED | GREEN WATER CLEAR |

| OPERATING CHARACTERISTICS AT 25°C AMBIENT | | | | | | |
|---|-----------|-----|-----|-----|---------------|-----------------------|
| CHARACTERISTICS | LED COLOR | MIN | TYP | MAX | UNITS | TEST CONDITIONS |
| LUMINOUS INTENSITY | YELLOW | 74 | 100 | | mcd | $I_F = 10 \text{ mA}$ |
| | GREEN | 280 | | 710 | | |
| | BLUE | 6.3 | | 20 | | |
| FORWARD VOLTAGE | YELLOW | | 2.1 | 2.8 | V | $I_F = 20 \text{ mA}$ |
| | GREEN | | 2.7 | 3.0 | | $I_F = 10 \text{ mA}$ |
| | BLUE | | 3.5 | 4.2 | | $I_F = 10 \text{ mA}$ |
| REVERSE CURRENT | YELLOW | | | 100 | μA | $V_R = 5 \text{ V}$ |
| | GREEN | | .01 | 10 | | |
| | BLUE | | | 10 | | |
| PEAK WAVELENGTH | YELLOW | | 585 | | nm | |
| | GREEN | | 523 | | | |
| | BLUE | | 428 | | | |
| VIEWING ANGLE | YELLOW | | 60 | | DEG | |
| | GREEN | | 30 | | | |
| | BLUE | | 70 | | | |



| ABSOLUTE MAXIMUM RATINGS AT 25°C AMBIENT | | UNITS | YELLOW | GREEN | BLUE |
|--|--|-------|-------------|-------|-------------|
| POWER DISSIPATION | | mW | 60 | 80 | 100 |
| CONTINUOUS FORWARD CURRENT | | mA | 20 | 20 | 20 |
| DERATING LINEAR FROM 50°C / 65°C FOR GREEN | | mA/°C | .25 | 0.57 | .44 |
| PEAK FORWARD CURRENT (1/10 DUTY CYCLE, 0.1 ms PULSE WIDTH) | | mA | 80 | — | 128 |
| LEAD SOLDERING TEMPERATURE, 5 SEC., 1/16" FROM BODY | | °C | 260 | | |
| OPERATING TEMPERATURE | | °C | -55 TO +100 | | -40 TO +100 |
| STORAGE TEMPERATURE | | °C | -55 TO +100 | | -40 TO +100 |

| REV | ECN NO | REVISIONS | DRN | CKD | APP | DATE |
|-----|--------|---|-----|------|--------|---------|
| A | — | NEW RELEASE | ALV | N.O. | MES | 2-22-07 |
| B | — | ADDED GREEN DERATING RATING, REMOVED GREEN TYP LUM. INT. VALUE, ADDED GREEN MAX LUM. INT. VALUE, GREEN MIN VF "2.7" WAS "3.3", GREEN MAX VF "3.7" WAS "3.9", ADDED TEST CONDITIONS. | KLJ | NR | 4/4/08 | |



- NOTES:
- LEADS TO FIT INTO HOLES SPACED AS PER HOLE PATTERN
 - WHEN A ZERO APPEARS IN THE LAST 3 DIGITS OF THE PART NUMBER THIS MEANS NO LAMP REQUIRED IN THAT POSITION.
 - LED LEAD DIMENSIONS SHOWN ARE MEASURED AT HOUSING EXIT.
 - PIN NUMBERS FOR REFERENCE ONLY, DESIGNATION NON-EXISTENT ON PARTS.
 - BLUE, GREEN: .020 SQ; YELLOW: .018 x .016
 - DIALIGHT PART NO. 564-0100-824F

• ATTENTION: OBSERVE PRECAUTIONS FOR HANDLING ELECTROSTATIC SENSITIVE DEVICES.

RoHS Compliant 564-0100-824F Thru hole Tri-level CBI
Part Numbers with the "F" suffix ending are RoHS Compliant. The bag packaging is marked with "RoHS Compliant" label or equivalent markings. Parts can be wave soldered, dip soldered or hand soldered using typical lead-free soldering process with max 260°C temp. for 5 sec.

| | | |
|---|--|-----|
| THIS DRAWING AND THE CONTENTS HEREIN ARE CONFIDENTIAL AND THE SOLE PROPERTY OF DIALIGHT. REPRODUCTION OF THIS DRAWING OR CONSTRUCTION OF ANY PARTS WITHIN THIS DRAWING ARE FORBIDDEN WITHOUT THE WRITTEN CONSENT OF DIALIGHT. | | |
| SCALE: DRAWING SCALE | DRAWING NUMBER | REV |
| ALL DIM'S IN: INCHES (MM) | C-17450 | B |
| TOLERANCES: UNLESS OTHERWISE SPECIFIED | TITLE 3 X 1 CBI BLOCK B, Y, G | |
| FRACTIONS: ±1/64 | RoHS COMPLIANT | |
| DECIMALS (.XX): ±.01 | MATERIAL | |
| DECIMALS (.XXX): ±.005 | Dialight 1501 ROUTE 34 SOUTH FARMINGDALE, NJ 07727 | |
| DECIMALS (.XXXX): ±.0005 | | |
| ANGLES: ±1° | | |
| FINISH: | | |
| FSCM 83330 | SHEET 1 OF 1 FAMILY TABLE: | |