

| REV | ECN NO | REVISIONS | DRN | CKD | APP | DATE |
|-----|--------|-------------|-----|-----|-----|------|
| A | | NEW RELEASE | ALV | MES | | |

| PART NUMBER | LED COLOR | | |
|---------------|--------------------|--------------------|--------------------|
| | POSITION 1 | POSITION 2 | POSITION 3 |
| 568-2232-806F | GREEN NON-DIFFUSED | GREEN NON-DIFFUSED | GREEN NON-DIFFUSED |

| OPERATING CHARACTERISTICS AT 25°C AMBIENT | | | |
|---|-----|-----|-----|
| CHARACTERISTICS | MIN | TYP | MAX |
| LUMINOUS INTENSITY | 32 | 50 | |
| FORWARD VOLTAGE | 2.1 | 2.8 | |
| REVERSE CURRENT | 100 | | |
| PEAK WAVELENGTH | 565 | | |
| VIEWING ANGLE | 45 | | |
| CAPACITANCE | 35 | | |

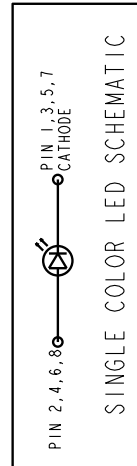
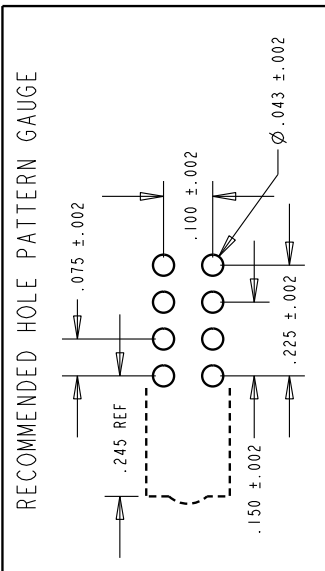
| ABSOLUTE MAXIMUM RATINGS AT 25 °C AMBIENT | | |
|--|------------|-------|
| CHARACTERISTICS | VALUES | UNITS |
| POWER DISSIPATION | 100 | mW |
| DERATING LINEAR FROM 50°C | 0.4 | mA/°C |
| CONTINUOUS FORWARD CURRENT | 30 | mA |
| PEAK FORWARD CURRENT (1/10 DUTY CYCLE, .01 ms PULSE WIDTH) | 120 | mA |
| LEAD SOLDERING TEMPERATURE, 5 SEC... 1/16" FROM BODY | 260 | °C |
| REVERSE VOLTAGE | 5 | V |
| OPERATING TEMPERATURE | -55 TO 100 | °C |
| STORAGE TEMPERATURE | -55 TO 100 | °C |

NOTES:

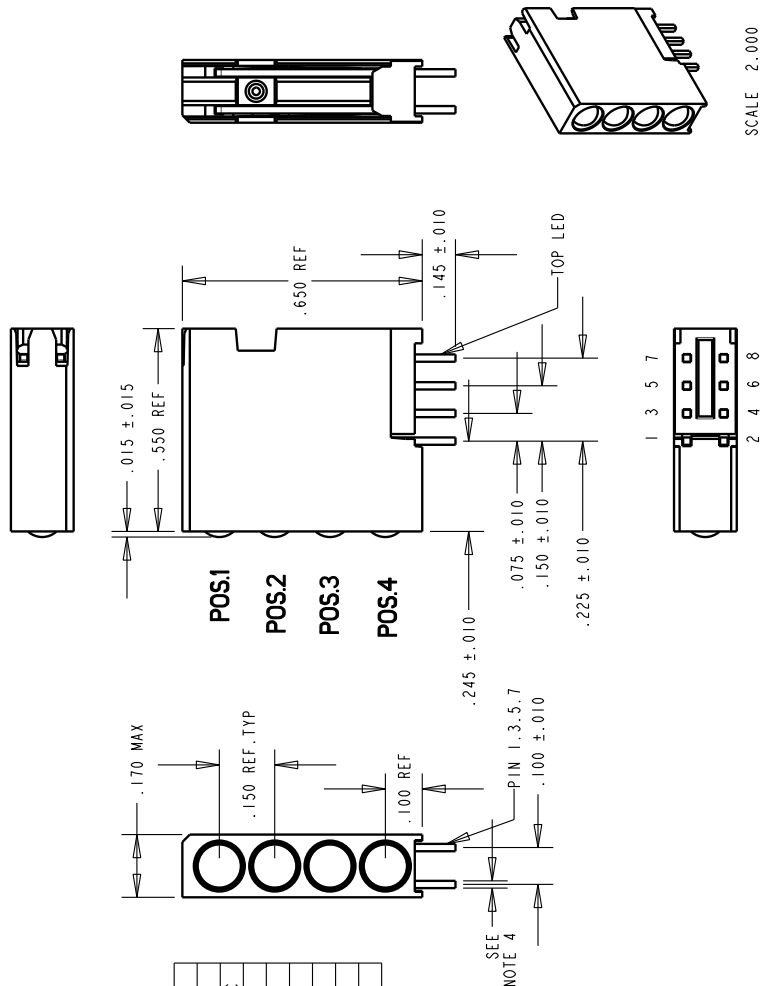
- LEADS TO FIT INTO HOLES SPACED AS PER HOLE PATTERN
- LEADS TO BE FREE OF DEFORMATION AFTER BENDING AND CUTTING
- LED LEAD DIMENSIONS SHOWN ARE MEASURED AT HOUSING EXIT
- LED LEAD THICKNESS = .016 x .018 = ALL LEADS
- THIS PRODUCT IS Pb FREE. IT IS IN COMPLIANCE WITH THE EUROPEAN UNION'S ROHS DIRECTIVE. EACH BAG IS MARKED WITH THE ROHS COMPLIANT LABEL P/N 9100-117-0852-99 OR EQUIVALENT
- DIALIGHT PART NUMBER = 568-2232-806F
- THIS ASSEMBLY CONTAINS ELECTROSTATIC DISCHARGE SENSITIVE DEVICES (ESDS). MAINTAIN ALL PRECAUTIONARY MEASURES DURING ASSEMBLY, HANDLING AND STORAGE IN ACCORDANCE WITH IPC-A-610.

RoHS Compliant 568-2232-806F

Packaging is marked with "RoHS Compliant" label or equivalent markings.
Parts can be wave soldered, dip soldered or hand soldered using typical lead-free soldering process with max 260°C temp. for 5 sec.



ATTENTION:
OBSERVE PRECAUTIONS FOR
HANDLING ELECTROSTATIC
SENSITIVE DEVICES



SCALE 2.000

| | |
|---|---|
| THIS DRAWING AND THE CONTENTS HEREIN ARE CONFIDENTIAL AND THE SOLE PROPERTY OF DIALIGHT. REPRODUCTION OR THIS DRAWING OR ANY PARTS THEREOF WITHOUT THE WRITTEN CONSENT OF DIALIGHT. | |
| ALL DIM'S IN: INCHES (UMI) | SCALE: 4.000 |
| TOLERANCES: UNLESS OTHERWISE SPECIFIED | |
| FRACTIONS: ±1/64 | |
| DECIMALS (.XX): ±.01 | |
| DECIMALS (.XXX): ±.005 | |
| DECIMALS (.XXXX): ±.0005 | |
| ANGLES: ±1° | |
| FINISH: | |
| FSCM | 83330 |
| SHEET | 1 OF 1 FAMILY TABLE: |
| DIALIGHT | 1501 ROUTE 34 SOUTH FARMINGDALE, NJ 07727 |
| DRAWING NUMBER | C-17545 |
| REV | A |
| TITLE | 4 - 1.00 BLOCK - 150 PITCH G.G.G.G |
| MATERIAL | .145 LEAD LENGTH ROHS COMPLIANT |