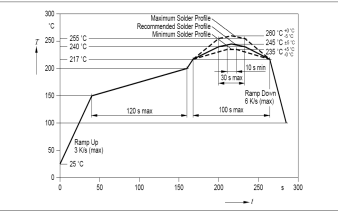
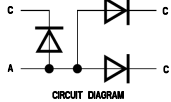
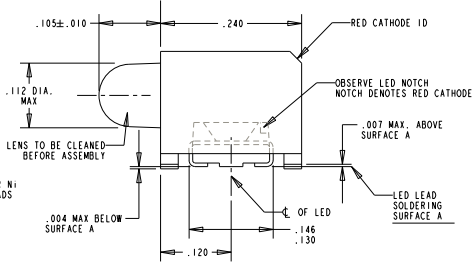
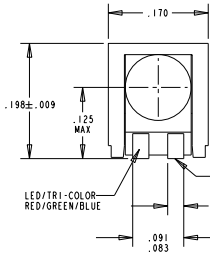


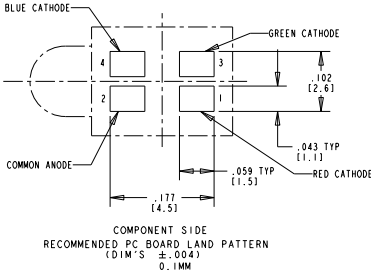
ABSOLUTE MAXIMUM RATINGS AT 25 °C AMBIENT	RED	GREEN	BLUE	UNITS
CONTINUOUS FORWARD CURRENT (ONE CHIPS ON)	30	20	20	V
CONTINUOUS FORWARD CURRENT (ALL CHIPS ON)	30	20	20	V
OPERATING TEMPERATURE	-40 TO +100			°C
STORAGE TEMPERATURE	-40 TO +100			°C
POWER CONSUMPTION	80	85	85	mW



RoHS REFLOW PROFILE



CIRCUIT DIAGRAM

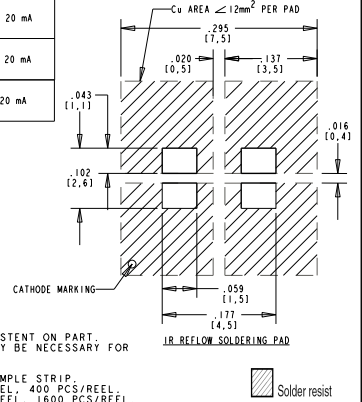


COMPONENT SIDE  
RECOMMENDED PC BOARD LAND PATTERN  
(DIM'S ±.004)  
0.1MM

TRI-COLOR LEDS  
OPERATING CHARACTERISTICS AT  $T_A = 25^\circ\text{C}$

LED CHARACTERISTICS	COLOR	MIN.	TYP.	MAX.	UNITS	TEST CONDITIONS
FORWARD VOLTAGE	RED	1.83	2.0	2.33	V	$I_F = 20\text{ mA}$
	GREEN	3.0	3.5	4.1		
	BLUE	3.0	3.6	4.1		
REVERSE CURRENT	RED	0.01		10	mA	$V_R = 12\text{ V (RED)}$ $V_R = 5\text{ V (GREEN/BLUE)}$
	GREEN	0.01		10		
	BLUE	0.01		10		
PEAK WAVELENGTH	RED		622		nm	$I_F = 20\text{ mA}$
	GREEN		523			
	BLUE		465			
DOMINANT WAVELENGTH	RED		615	617	nm	$I_F = 20\text{ mA}$
	GREEN		520	528		
	BLUE		463	470		
VIEWING ANGLE (2 $\theta$ 1/2)	RED		40	45	DEG.	$I_F = 20\text{ mA}$
	GREEN		40	45		
	BLUE		40	45		
LUMINOUS INTENSITY	RED		30	60	mcd	$I_F = 20\text{ mA}$
	GREEN		100	160		
	BLUE		18	37		

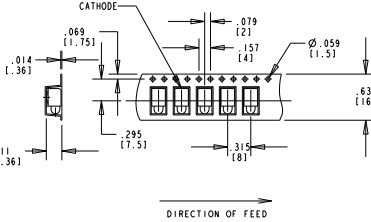
REV	ECN NO	REVISIONS	DRN	CD	APP	DATE
A		NEW RELEASE	SM	N.O.	MES	5-24-07
B		CHANGED NOTE 8	SM			



NOTES:

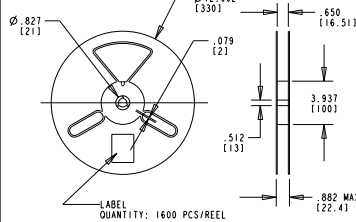
1. MILLIMETER DIMENSIONS SHOWN FOR REFERENCE ONLY.
2. PAD NUMBERS FOR REFERENCE ONLY. DESIGNATION NON-EXISTENT ON PART.
3. STORAGE CONDITIONS FOR TAPED PRODUCT: RE-TAPING MAY BE NECESSARY FOR PRODUCT STORED MORE THAN TWELVE MONTHS.
4. ORDER QUANTITY IS LED ASSEMBLIES, NOT REELS.
5. -002F SUFFIX MEANS PARTS ARE PACKED ON A 20 PCS SAMPLE STRIP.
6. -007F SUFFIX MEANS PARTS ARE PACKED ON A 7 INCH REEL, 400 PCS/REEL.
7. -013F SUFFIX MEANS PARTS ARE PACKED ON A 13 INCH REEL, 1600 PCS/REEL.
8. LENS MOVEMENT IN RELATIONSHIP TO THE HOUSING IS:
9. -009" T.I.R. VERTICALLY.
10. -007" T.I.R. HORIZONTALLY.
11. FRONT AND REAR TERMINALS OF ASSEMBLY TO BE WITHIN .005 COPLANARITY.
12. DIALIGHT PART NUMBER: 591-3501-002F, 591-3501-007F, 591-3501-013F
13. DEVICE HAS A MOISTURE SENSITIVITY LEVEL "2" CAUTION LABEL
14. APPLIED AS PER JEDEC STD. 033
15. THIS PRODUCT IS Pb FREE. IT IS IN COMPLIANCE WITH THE DIRECTIVE 2002/95/EC (RoHS) AND DOES NOT CONTAIN ANY OF THE BANNED SUBSTANCES Pb, Cd, MERCURY, HEXAVALENT CHROMIUM OR FLAME RETARDANTS (PBB, PBDE)
16. THIS ASSEMBLY CONTAINS ELECTROSTATIC DISCHARGE SENSITIVE DEVICES (ESDS). MAINTAIN ALL PRECAUTIONARY MEASURES DURING ASSEMBLY, HANDLING AND STORAGE IN ACCORDANCE WITH IPC-A-610.

TAPING SPECIFICATION

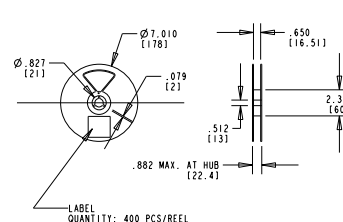


TOLERANCE: .004 UNLESS OTHERWISE SPECIFIED.  
MILLIMETER DIMENSIONS SHOWN FOR REFERENCE ONLY.

REEL SPECIFICATION



13 INCH DIA. REEL SPECIFICATIONS



7 INCH DIA. REEL SPECIFICATIONS



ATTENTION:  
OBSERVE PRECAUTIONS FOR  
HANDLING ELECTROSTATIC  
SENSITIVE DEVICES

RoHS COMPLIANT 591-3501-013F SURFACE MOUNT LED  
PART NUMBERS WITH THE "F" SUFFIX ENDING ARE RoHS COMPLIANT.  
PACKAGING IS MARKED WITH "RoHS COMPLIANT" LABEL OR  
EQUIVALENT MARKINGS.  
PARTS CAN BE REFLOW SOLDERED PER RoHS REFLOW PROFILE, WAVE  
SOLDERED, DIP SOLDERED OR HAND SOLDERED USING TYPICAL  
LEAD-FREE SOLDERING PROCESS WITH MAX 260°C TEMP.  
FOR 10-20 SEC.

THIS DRAWING AND THE CONTENTS HEREIN ARE CONFIDENTIAL AND THE SOLE PROPERTY OF DIALIGHT. REPRODUCTION OF THIS DRAWING OR CONSTRUCTION OF ANY PARTS WITHIN THIS DRAWING ARE FORBIDDEN WITHOUT THE WRITTEN CONSENT OF DIALIGHT.	
SCALE: DRAWING SCALE	DRAWING NUMBER
ALL DIM'S IN: INCHES (MM)	C-17476
TOLERANCES: UNLESS OTHERWISE SPECIFIED	REV B
FRACTIONS: ±1/64	TITLE TRI-COLOR LED RED, GREEN, BLUE
DECIMALS: ±.001; ±.01	RoHS COMPLIANT
DECIMALS: ±.001; ±.005	MATERIAL
ANGLES: ±1°	Dialight
FINISH:	1501 ROUTE 34 SOUTH FARMINGDALE, NJ 07727
FSM 83330	SHEET 1 OF 1 FAMILY TABLE