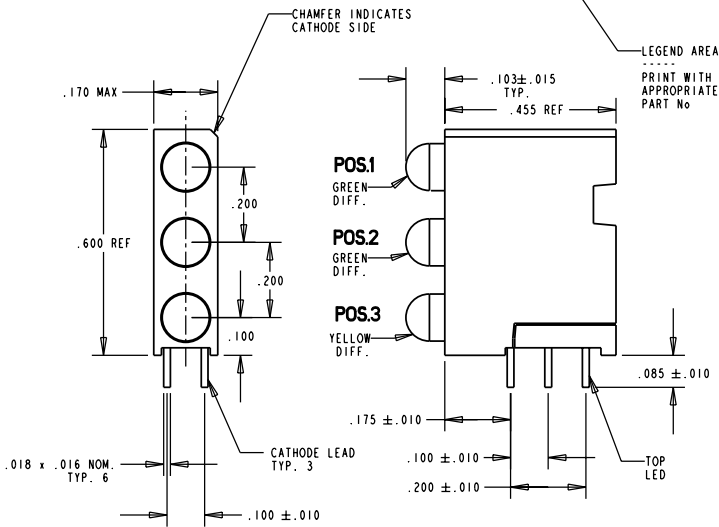
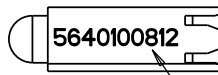
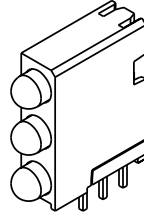
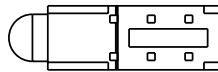
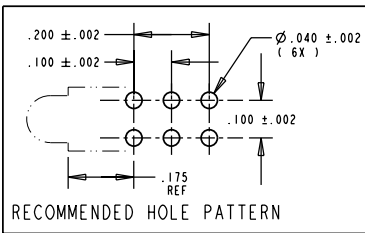


REV.	ECN NO.	REVISIONS	DRN.	CKD.	APP.	DATE
A		NEW RELEASE	DC	NO	N.O.	1-11-99
B		REORIENTED PRINTING	TC			



LED COLOR =						
OPERATING CHARACTERISTICS AT 25°C AMBIENT						
CHARACTERISTICS	LED COLOR	MIN	TYP	MAX	UNITS	TEST CONDITIONS
LUMINOUS INTENSITY	GREEN DIFF.	4.7	12.6		mcd	I _r = 10 mA
	YELLOW DIFF.	7.4	10.0			
FORWARD VOLTAGE	GREEN DIFF.		2.1	2.8	V	I _r = 20 mA
	YELLOW DIFF.		2.1	2.8		
REVERSE CURRENT	ALL			100	μA	V _a = 5 V
PEAK WAVELENGTH	GREEN DIFF.		565		nm	
	YELLOW DIFF.		585			
VIEWING ANGLE	ALL		60		Degree	
CAPACITANCE	GREEN DIFF.		35		pf	V _r = 0, f = 1 MHz
	YELLOW DIFF.		15			

ABSOLUTE MAXIMUM RATING AT 25°C AMBIENT	UNITS	GREEN DIFF.	YELLOW DIFF.
POWER DISSIPATION	mW	100	60
DERATE LINEARLY FROM 50°C	mA/°C	0.4	0.25
CONTINUOUS FORWARD CURRENT	mA	30	20
PEAK FORWARD CURRENT (1/10 DUTY CYCLE, 0.1 ms PULSE WIDTH)	mA	120	80
LEAD SOLDERING TEMPERATURE, 5 SEC., 1/16" FROM BODY	°C	260	260
OPERATING TEMPERATURE	°C	-55 TP 100	-55 TP 100
STORAGE TEMPERATURE	°C	-55 TO 100	-55 TO 100



NOTES:
 1- LEADS TO FIT INTO HOLES SPACED AS PER HOLE PATTERN
 2- LED LEAD DIMENSIONS SHOWN ARE MEASURED AT HOUSING EXIT
 3- DIALIGHT PART NUMBER 564-0100-812.

THIS DRAWING AND THE CONTENTS HEREIN ARE CONFIDENTIAL AND THE SOLE PROPERTY OF DIALIGHT. REPRODUCTION OF THIS DRAWING OR CONSTRUCTION OF ANY PARTS WITHIN THIS DRAWING ARE FORBIDDEN WITHOUT THE WRITTEN CONSENT OF DIALIGHT.

SCALE: 4:1	DRAWING NUMBER	REV
ALL DIM'S IN: INCHES	C-16461	B
TOLERANCES: UNLESS OTHERWISE SPECIFIED	TITLE	SPECIAL 3X1 CBI BLOCK
FRACTIONS: ±1/64	MATERIAL	
DECIMALS (.XX): ±.020		
DECIMALS (.XXX): ±.015		
ANGLES: ±3°		
FINISH:	Dialight	1913 ATLANTIC AVE. MANASQUAN, N. J. 08736
FSCM 83330	SHEET OF	FAMILY TABLE: