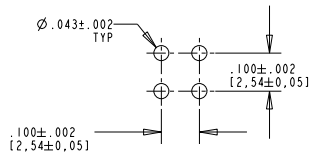
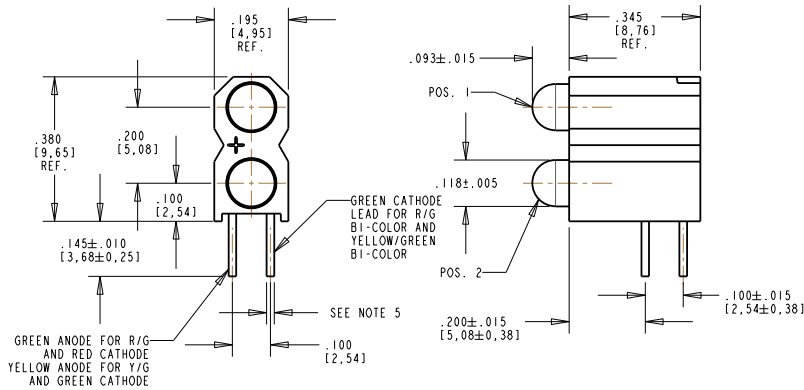


PART NUMBER	LED COLOR		REVISIONS			
	POSITION 1	POSITION 2	REV	ECN	DRN	DATE
553-0711-310F	RED/GREEN	RED/GREEN	A	---	TWC	4-22-05
553-0744-310F	YELLOW/GREEN	YELLOW/GREEN	A	---	TWC	4-22-05

REV	ECN NO	REVISIONS	DRN	CKD	APP	DATE
A	---	NEW RELEASE	TWC			



RECOMMENDED HOLE PATTERN GAUGE

LED COLOR = GRN/YEL BI-COLOR				LED COLOR = RED/GRN BI-COLOR			
OPERATING CHARACTERISTICS AT 25°C AMBIENT							
CHARACTERISTICS	COLOR	MIN	TYP	MAX	UNITS	TEST CONDITIONS	
LUMINOUS INTENSITY	GREEN	2.5	6.3		mcd	I <sub>f</sub> = 10 mA	
	YELLOW	2.5	4.3				
	RED	2.5	4.7				
	GREEN	3.7	10.0				
FORWARD VOLTAGE	GREEN		2.1	2.8	V	I <sub>f</sub> = 20 mA	
	YELLOW		2.1	2.8			
	RED		2.0	2.8			
	GREEN		2.1	2.8			
PEAK WAVELENGTH	GREEN		565		nm	I <sub>f</sub> = 20 mA	
	YELLOW		585				
	RED		635				
	GREEN		565				
VIEWING ANGLE	GREEN		80		DEGREES		
	YELLOW		80				
	RED		60				
	GREEN		60				

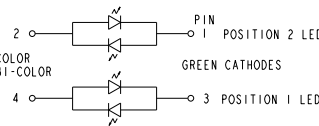
ABSOLUTE MAXIMUM RATINGS AT 25°C AMBIENT				
	GREEN	RED	YELLOW	UNITS
POWER DISSIPATION	100	100	60	mW
DERATE LINEARLY FROM 50°C	0.4	0.4	0.25	mA/°C
CONTINUOUS FORWARD CURRENT	30	30	20	mA
PEAK FORWARD CURRENT (1/10 DUTY CYCLE, 10 ms PULSE WIDTH)	120	120		mA
PEAK FORWARD CURRENT (1/10 DUTY CYCLE, 0.1 ms PULSE WIDTH)	120		80	mA
LEAD SOLDERING TEMPERATURE, 6 SEC., 1/16" FROM BASE	260	260		°C
LEAD SOLDERING TEMPERATURE, 5 SEC., 1/16" FROM BASE	260		260	°C
OPERATING TEMPERATURE				-55 TO +100
STORAGE TEMPERATURE				-55 TO +100

NOTES:

- LEADS TO FIT INTO HOLES SPACED AS PER HOLE PATTERN.
- LED LEAD DIMENSIONS SHOWN ARE MEASURED AT HOUSING EXIT.
- PIN NUMBERS FOR REFERENCE ONLY, DESIGNATION NON-EXISTENT ON PARTS.
- DIALIGHT PART NUMBER: 553-07XX-310F.
- PACKAGE PARTS IN ANTI-STATIC BAGS, 50 PC'S PER BAG. APPLY LABEL WITH DIALIGHT P/N, DATE CODE, QTY/BAG.
- THIS PRODUCT IS Pb FREE. IT IS IN COMPLIANCE WITH THE EUROPEAN UNION'S ROHS DIRECTIVE. EACH BAG IS MARKED WITH THE Pb FREE LABEL P/N 9100-117-0797-99, OR EQUIVALENT.



RED CATHODES FOR R/G BI-COLOR  
YELLOW CATHODES FOR Y/G BI-COLOR



LED SCHEMATIC REF.

THIS DRAWING AND THE CONTENTS HEREIN ARE CONFIDENTIAL AND THE SOLE PROPERTY OF DIALIGHT. REPRODUCTION OF THIS DRAWING OR CONSTRUCTION OF ANY PARTS WITHIN THIS DRAWING ARE FORBIDDEN WITHOUT THE WRITTEN CONSENT OF DIALIGHT.		
SCALE: 4.000	DRAWING NUMBER	REV
ALL DIM'S IN: INCHES (MM)	C-17228	A
TOLERANCES: UNLESS OTHERWISE SPECIFIED	TITLE	
FRACTIONS: ±1/64	3mm BI-LEVEL LED CBI	
DECIMALS (.XXX): ±.01	MATERIAL	
DECIMALS (.XXXX): ±.0005		
ANGLES: ±°		
FINISH:	Dialight	
FSCM 83330	1501 ROUTE 34 SOUTH, FARMINGDALE, NJ 07727	
	SHEET 1 OF 1 FAMILY TABLE:	