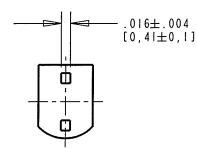
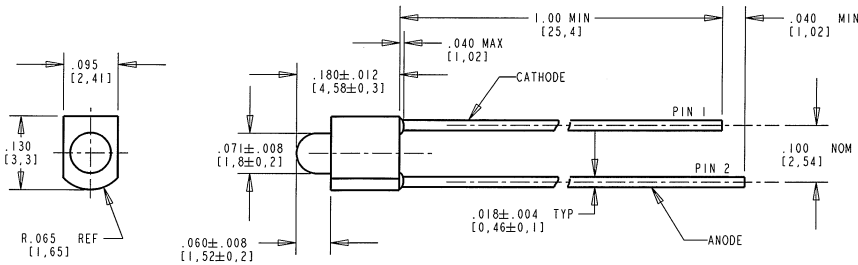


DIALIGHT PART NUMBER	COLOR
521-8068F	RED-ORANGE/GREEN
521-8069F	YELLOW/GREEN

RoHS COMPLIANT 521-806XF BI-COLOR LED

Part Numbers with the "F" suffix ending are RoHS Compliant.
 For Example: 521-8069F
 Packaging is marked with "RoHS Compliant" label or equivalent markings. Parts can be wave soldered, dip soldered or hand soldered using typical lead-free soldering process with max 260°C temp. for 5 sec.

REV	ECN NO	REVISIONS	DRN	CKD	APP	DATE
A		NEW RELEASE	KLJ			2-28-08



PART NUMBER	COLOR	PEAK WAVELENGTH (nm)	DOMINANT WAVELENGTH (nm)	VIEWING ANGLE (°)	LUMINOUS INTENSITY (mcd) @ I _f =20 mA, 25°C		FORWARD VOLTAGE (V) @ I _f =20 mA, 25°C	
		TYP	TYP		MIN	TYP	TYP	MAX
521-8068F	RED ORANGE	632	624	40	110	300	2.0	2.4
	GREEN	575	572		23	45	2.1	2.4
521-8069F	YELLOW	598	595		50	120	2.0	2.4
	GREEN	575	572		23	45	2.1	2.4

NOTES:

- LENS COLOR: WHITE DIFFUSED
- DIE: AlInGaP
- LEAD SPACING MEASURED NEAR EPOXY PACKAGE.
- PIN NUMBERS FOR REFERENCE ONLY, DESIGNATION NON-EXISTENT ON PART.
- DIALIGHT PART NUMBERS: 521-8068F, 521-8069F
- THIS ASSEMBLY CONTAINS ELECTROSTATIC DISCHARGE SENSITIVE DEVICES (ESDS). MAINTAIN ALL PRECAUTIONARY MEASURES DURING ASSEMBLY, HANDLING, AND STORAGE IN ACCORDANCE WITH IPC-A-610.

ABSOLUTE MAXIMUM RATINGS AT 25°C AMBIENT	521-8068F		521-8069F		UNITS
	RED ORANGE	GREEN	YELLOW	GREEN	
POWER DISSIPATION	120	75	120	75	mW
CONTINUOUS FORWARD CURRENT	50	30	50	30	mA
PEAK FORWARD CURRENT (1/10 DUTY CYCLE, 0.1 ms PULSE WIDTH)	130	60	90	60	mA
DERATING LINEAR FROM 40°C FOR RED ORANGE & YELLOW / 50°C FOR GREEN	0.75	0.40	0.75	0.40	mA/°C
REVERSE VOLTAGE	5				V
SOLDERING TEMPERATURE (.079" [2mm] FROM BODY FOR 5 SECONDS)	260				°C
OPERATING TEMPERATURE	-40 TO +100				°C
STORAGE TEMPERATURE	-55 TO +100				°C



ATTENTION:
OBSERVE PRECAUTIONS FOR
HANDLING ELECTROSTATIC
SENSITIVE DEVICES

THIS DRAWING AND THE CONTENTS HEREIN ARE CONFIDENTIAL AND THE SOLE PROPERTY OF DIALIGHT. REPRODUCTION OF THIS DRAWING OR CONSTRUCTION OF ANY PARTS WITHIN THIS DRAWING ARE FORBIDDEN WITHOUT THE WRITTEN CONSENT OF DIALIGHT.		
SCALE: DRAWING SCALE	DRAWING NUMBER	REV
ALL DIM'S IN: INCHES (MM)	C-17594	A
TOLERANCES: UNLESS OTHERWISE SPECIFIED	TITLE	
FRACTIONS: ±1/64	1.8 mm BI-COLOR LED	
DECIMALS (.XX): ±.01	RoHS COMPLIANT	
DECIMALS (.XXX): ±.005	MATERIAL	
DECIMALS (.XXXX): ±.0005		
ANGLES: ±1°		
FINISH:	Dialight	1501 ROUTE 34 SOUTH FARMINGDALE, NJ 07727
FSCM 83330	SHEET 1 OF 1	FAMILY TABLE: