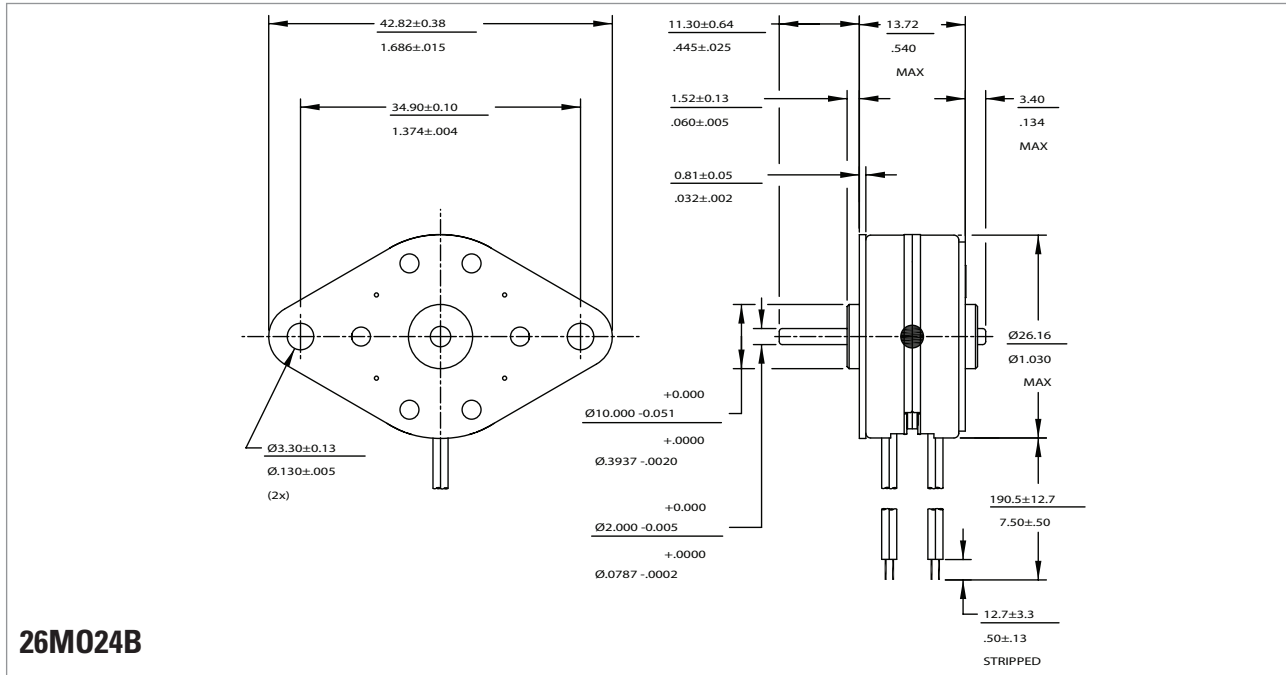


26M024B



Technical Specifications

Part Number	Unipolar		Bipolar		
	26M024B1U	26M024B2U	26M024B1B	26M024B2B	
Rated voltage	(vdc)	5	12	5	12
Resistance per phase ± 10%	(ohms)	19.60	110.00	19.80	108.00
Inductance per phase, Typ	(mH)	4.10	29.90	13.00	60.70
Rated current per phase *	(amps)	0.26	0.11	0.25	0.11
Holding torque, min *	(oz-in / mNm)	0.9 / 6.3		1.1 / 7.8	
Step angle *	(degrees)	15 ± 1°			
Steps per revolution *		24			
Detent torque, max	(oz-in / mNm)	0.19 / 1.34			
Thermal resistance	(°C / watt)	N.A.			
Rotor moment of inertia	(oz-in-s ² / g-cm ²)	6.01 x 10E-3 / 1.1			
Ambient temperature range					
Operating	(°C)	-20 ~ +70			
Storage	(°C)	-40 ~ +85			
Bearing type		Sintered Bronze Sleeve			
Insulation resistance at 500vdc	(vac)	100 megohms			
Dielectric withstanding voltage	(lbs / g)	650 for 2 seconds			
Weight		.075 / 34			
Shaft load ratings, max at 600 rpm					
Radial	(lbs / kg)	.337 / .153			
Axial	(lbs / kg)	.337 / .153			
Leadwires		AWG 28, UL 1429			
Temperature class, max		B(130°C)			
RoHS		Compliant			

All motor data values at 25°C unless otherwise specified

* Energise at rated current, 2 phase on