

AI-TWIN 2X 0,75-10 GY

Order No.: 3200975

<http://eshop.phoenixcontact.de/phoenix/treeViewClick.do?UID=3200975>

Ferrule, Length: 17 mm, Color: gray

Commercial data

GTIN (EAN)	4017918094522
sales group	B252
Pack	100 pcs.
Customs tariff	85369010
Weight/Piece	0.00015 KG
Catalog page information	Page 667 (CL-2009)

Product notesWEEE/RoHS-compliant since:
11/26/2005

<http://www.download.phoenixcontact.com>
Please note that the data given here has been taken from the online catalog. For comprehensive information and data, please refer to the user documentation. The General Terms and Conditions of Use apply to Internet downloads.

Technical data**General**

Length (b)	17 mm
Color	gray
Material	E-CU
Sleeve length	10 mm
Inner dimension of the insulating collar (d)	2.8 mm

Ferrule diameter	1.8 mm
Insulating collar thickness	0.25 mm
Sleeve wall thickness	0.15 mm
Dimension d3	5 mm

Certificates / Approvals

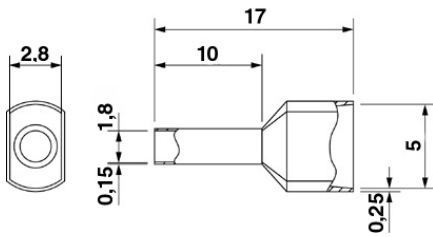


Certification

CSA, UCSA

Diagrams/Drawings

Dimensioned drawing



Address

PHOENIX CONTACT Inc., USA
586 Fulling Mill Road
Middletown, PA 17057, USA
Phone (800) 888-7388
Fax (717) 944-1625
<http://www.phoenixcon.com>



© 2010 Phoenix Contact
Technical modifications reserved;