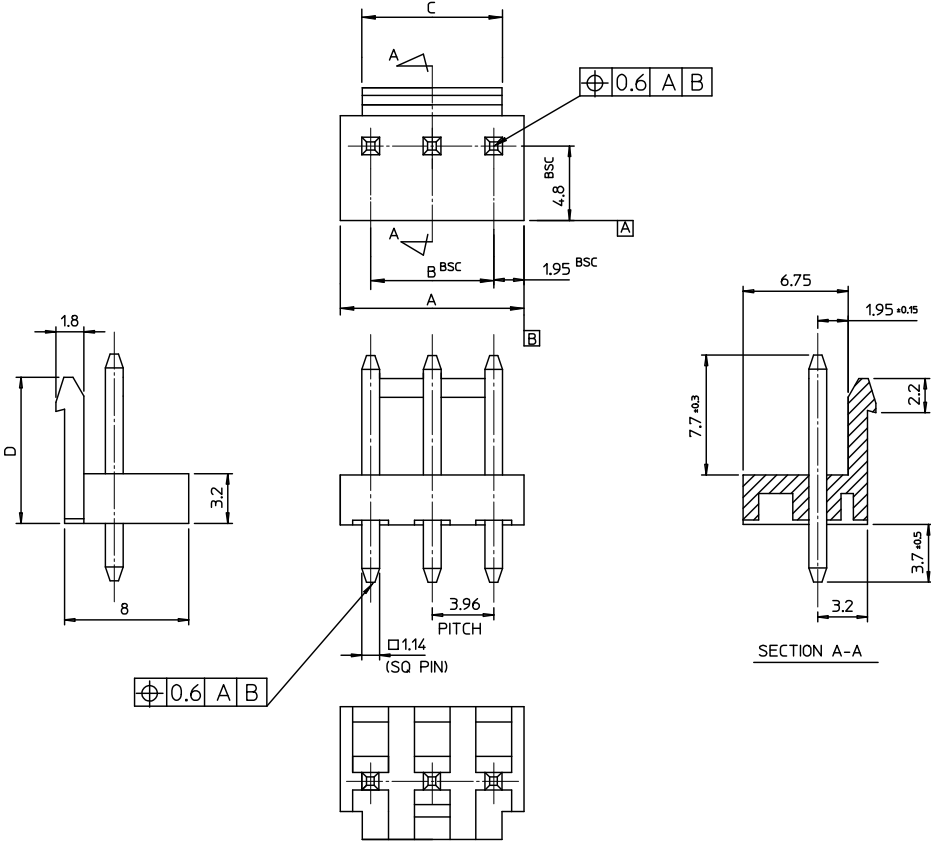
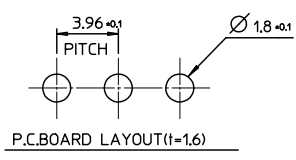


10 9 8 7 6 5 4 3 2 1



NOTES  
 1. MATERIAL : HEADER : PA66, ①PC/PET  
 PIN : BRASS(CDA 2700)  
 2. FINISHES : PIN  
 THICKNESS - TIN PLATED 3.0 MICROMETER MIN.  
 OVER Cu 1.5 MICROMETER MIN.  
 3. PRODUCT SPECIFICATION : PS-35978-001

LEGEND  
 35978-\*\*\*\*  
 COLOR : 0 - WHITE  
 1 - BLACK  
 2 - RED  
 3 - YELLOW  
 4 - BLUE  
 MATERIAL 1 : PA66 ①3 : PC/PET  
 CURCUIT NO. (02.03.04...)



REVISED EC NO: KOR2009-0137 DRWN: JHPARK01 2009/05/21 CHK: CHIKHAY YANG 2009/05/21 APPR: YUNSIKKIM 2009/05/22	QUALITY SYMBOLS	GENERAL TOLERANCES (UNLESS SPECIFIED)	DIMENSION STYLE	SCALE	DESIGN UNITS	THIRD ANGLE PROJECTION
	$\nabla = 0$ $\nabla = 0$	mm INCH 4 PLACES ± --- ± --- 3 PLACES ± --- ± --- 2 PLACES ± --- ± --- 1 PLACE ± 0.30 ± --- ANGULAR ± 2 °	MM ONLY	4:1	METRIC	$\odot$ $\square$
	DESCRIPTION	DRAFT WHERE APPLICABLE MUST REMAIN WITHIN DIMENSIONS	DRAWN BY DATE Y. R. WI 1999/05/07 CHECKED BY DATE J. K. OH 1999/05/07 APPROVED BY DATE C. W. LEE 1999/05/07	TITLE		
			MATERIAL NO. SEE TABLE DOCUMENT NO. SD-35978-001	3.96 W/B HEADER ASSY MOLEX INCORPORATED SHEET NO. 1 OF 01		