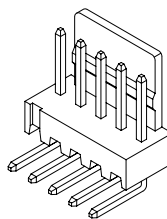
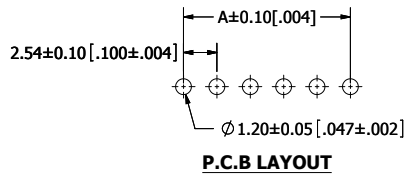
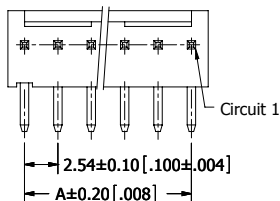


PART NUMBER CODING
SWR25X-NREC-S__-R_-BA

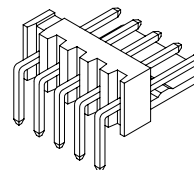
TERMINATION TYPE
 A= RIGHT ANGLE BENT, TYPE 2
 B= RIGHT ANGLE BENT, TYPE 1

NUMBER OF POSITIONS
 (CONTACTS PER ROW)

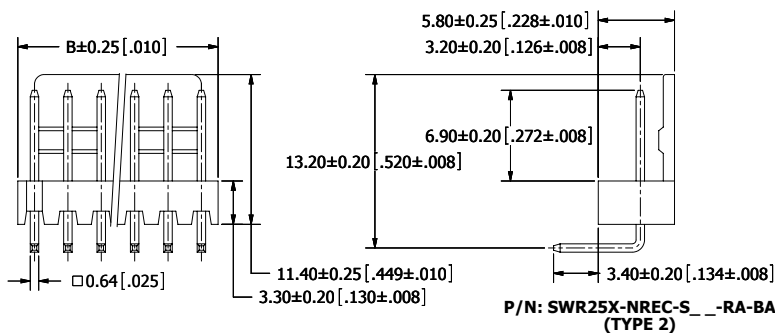
REVISIONS				
REV.	ECO. NO	DESCRIPTION	DATE	BY
A	2006	INITIAL RELEASE	9/16/2009	JH



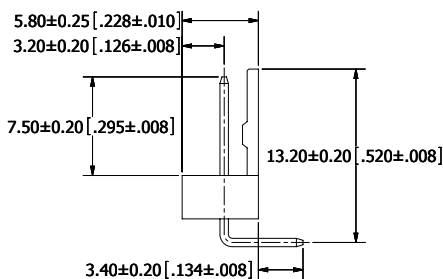
P/N: SWR25X-NREC-S__-RA-BA
(TYPE 2)



P/N: SWR25X-NREC-S__-RB-BA
(TYPE 1)



P/N: SWR25X-NREC-S__-RA-BA
(TYPE 2)



P/N: SWR25X-NREC-S__-RB-BA
(TYPE 1)

Part Number	Positions/ Contacts	A		B	
		MM	INCH	MM	INCH
SWR25X-NREC-S02-R_-BA	02/02	2.54	0.100	5.08	0.200
SWR25X-NREC-S03-R_-BA	03/03	5.08	0.200	7.62	0.300
SWR25X-NREC-S04-R_-BA	04/04	7.62	0.300	10.16	0.400
SWR25X-NREC-S05-R_-BA	05/05	10.16	0.400	12.70	0.500
SWR25X-NREC-S06-R_-BA	06/06	12.70	0.500	15.24	0.600
SWR25X-NREC-S07-R_-BA	07/07	15.24	0.600	17.78	0.700
SWR25X-NREC-S08-R_-BA	08/08	17.78	0.700	20.32	0.800
SWR25X-NREC-S09-R_-BA	09/09	20.32	0.800	22.86	0.900
SWR25X-NREC-S10-R_-BA	10/10	22.86	0.900	25.40	1.000
SWR25X-NREC-S11-R_-BA	11/11	25.40	1.000	27.94	1.100
SWR25X-NREC-S12-R_-BA	12/12	27.94	1.100	30.48	1.200
SWR25X-NREC-S13-R_-BA	13/13	30.48	1.200	33.02	1.300
SWR25X-NREC-S14-R_-BA	14/14	33.02	1.300	35.56	1.400
SWR25X-NREC-S15-R_-BA	15/15	35.56	1.400	38.10	1.500
SWR25X-NREC-S16-R_-BA	16/16	38.10	1.500	40.64	1.600
SWR25X-NREC-S17-R_-BA	17/17	40.64	1.600	43.18	1.700
SWR25X-NREC-S18-R_-BA	18/18	43.18	1.700	45.72	1.800
SWR25X-NREC-S19-R_-BA	19/19	45.72	1.800	48.26	1.900
SWR25X-NREC-S20-R_-BA	20/20	48.26	1.900	50.80	2.000

NOTES:

- INSULATOR MATERIAL: NYLON66, UL94V-2, COLOR: BEIGE (PANTONE 7506C).
- CONTACT MATERIAL: BRASS.
- CONTACT PLATING: TIN OVERALL.
- CURRENT RATING: 4 AMPS.
- VOLTAGE RATING: 250V AC/DC.
- INSULATOR RESISTANCE: 1000 MEGOHMS MIN.
- CONTACT RESISTANCE: 10 MILLIOHMS MAX.
- DIELECTRIC WITHSTANDING VOLTAGE: 1000V AC.
- OPERATING TEMPERATURE: -25° C TO +85° C.
- MATES WITH SWH25X SERIES SINGLE ROW HOUSING.



RoHS COMPLIANT

UNLESS OTHERWISE SPECIFIED:
 DIMENSIONS ARE IN MM(INCHES)
 TOLERANCES:
 ANGULAR: ± 5°
 X = ± 0.10 [.010]
 XX = ± 0.15 [.004]
 XXX = ± 0.50 [.020]
 SURFACE FINISH: 63 Ra
 REMOVE ALL BURRS AND SHARP EDGES .010 MAX
 INTERPRET DIMENSIONS AND GEOMETRIC TOLERANCING PER: ANSI Y14.5M-1994

DATE	NAME
9/16/09	JH
DRAWN	



DESCRIPTION: WAFER 2.54mm CC, 1 ROW, RA/RB
 PART NUMBER: SWR25X-NREC-S__-R_-BA
 SIZE: C
 DWG. NO.: 11314
 SCALE: 4:5:1
 SHEET 1 OF 1