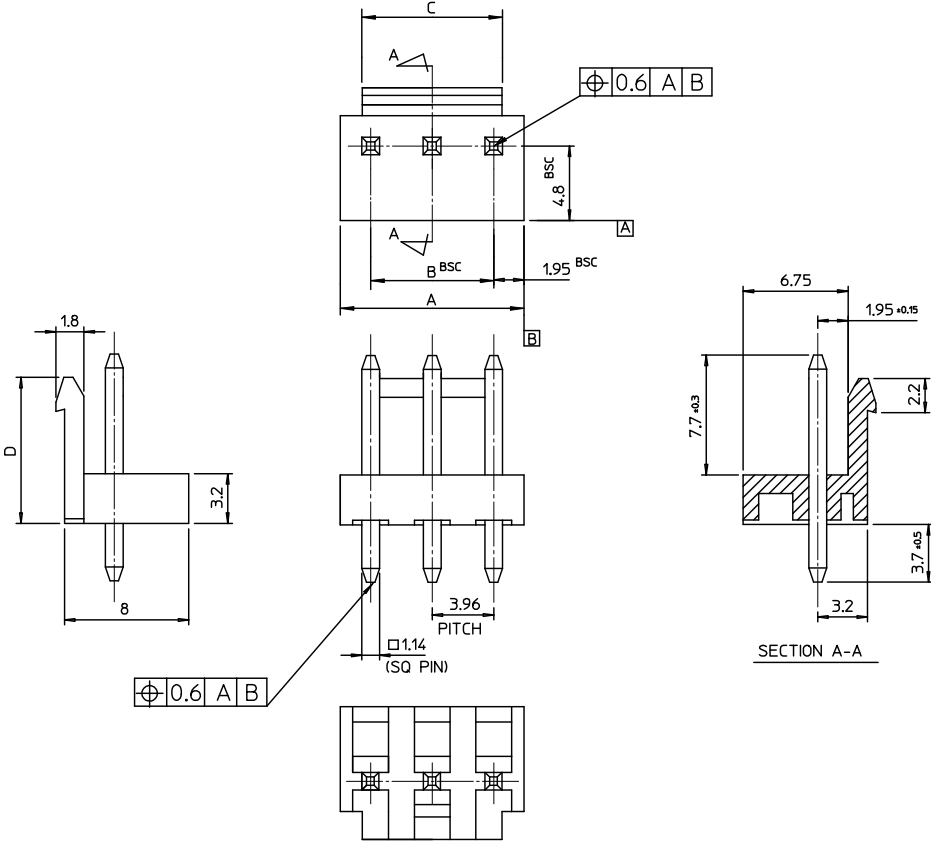


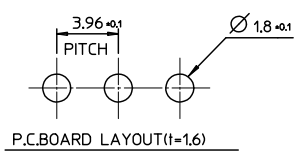
10 9 8 7 6 5 4 3 2 1



NOTES
 1. MATERIAL : HEADER : PA66, ①PC/PET
 PIN : BRASS(CDA 2700)
 2. FINISHES : PIN
 THICKNESS - TIN PLATED 3.0 MICROMETER MIN.
 OVER Cu 1.5 MICROMETER MIN.
 3. PRODUCT SPECIFICATION : PS-35978-001

LEGEND
 35978-****
 COLOR : 0 - WHITE
 1 - BLACK
 2 - RED
 3 - YELLOW
 4 - BLUE
 MATERIAL 1 : PA66 ①3 : PC/PET
 CIRCUIT NO. (02.03.04...)

56.50	55.44	59.40	3597815**	35978-15**	15
52.54	51.48	55.44	3597814**	-14**	14
48.58	47.52	51.48	3597813**	-13**	13
44.62	43.56	47.52	3597812**	-12**	12
40.66	39.60	43.56	3597811**	-11**	11
36.70	35.64	39.60	3597810**	-10**	10
32.74	31.68	35.64	3597809**	-09**	9
28.78	27.72	31.68	3597808**	-08**	8
24.84	23.76	27.72	3597807**	-07**	7
20.86	19.80	23.76	3597806**	-06**	6
16.90	15.84	19.80	3597805**	-05**	5
12.94	11.88	15.84	3597804**	-04**	4
8.98	7.92	11.88	3597803**	-03**	3
5.02	3.96	7.92	3597802**	-02**	2



REVISED EC NO: KOR2009-0137 DRWN: JHPARK01 CHKD: H. YANG APPR: YUNSIKIM	QUALITY SYMBOLS	GENERAL TOLERANCES (UNLESS SPECIFIED)	DIMENSION STYLE	SCALE	DESIGN UNITS	THIRD ANGLE PROJECTION
	▽=0	mm INCH	MM ONLY	4:1	METRIC	◎ □
	▽=0	4 PLACES ± --- ± ---	DRAWN BY DATE	TITLE		
		3 PLACES ± --- ± ---	Y. R. WI 1999/05/07	3.96 W/B HEADER ASSY		
	2 PLACES ± --- ± ---	1 PLACES ± 0.30 ± ---	CHECKED BY DATE	APPROVED BY DATE		
	ANGULAR ± 2 °		J. K. OH 1999/05/07	C. W. LEE 1999/05/07		
	DRAFT WHERE APPLICABLE MUST REMAIN WITHIN DIMENSIONS		MATERIAL NO.	DOCUMENT NO.	SHEET NO.	
			SEE TABLE	SD-35978-001	1 OF 01	
			THIS DRAWING CONTAINS INFORMATION THAT IS PROPRIETARY TO MOLEX INCORPORATED AND SHOULD NOT BE USED WITHOUT WRITTEN PERMISSION			